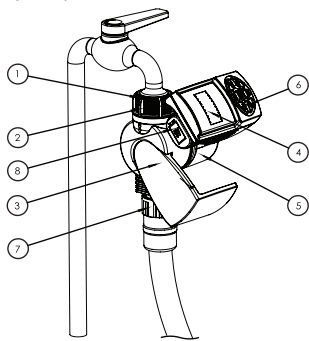


## 1. COMPONENTS IDENTIFICATION

1. Female swivel connector.
2. Interior filter.
3. Controller cover.
4. LCD screen.
5. Controller body.
6. Programming and operation buttons.
7. Male hose thread connection.
8. Battery compartment.

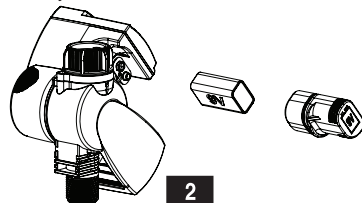


1

## 2. BATTERY INSTALLATION

1. Open the controller cover by rotating the controller body.
2. Hold the controller with the battery compartment facing you.
3. Pull the battery compartment cover to open the compartment.
4. Connect an **alkaline 9V battery** to the battery connector.
5. Insert the battery into the battery compartment and close the compartment by pressing its cover.

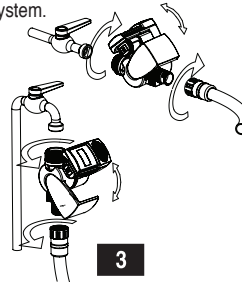
After the battery compartment is closed and you finish programming the controller, rotate the controller back to its original position, so that the LCD screen is covered by the controller's cover.



2

## 3. CONTROLLER INSTALLATION

1. Make sure the filter is in place.
2. Screw the female swivel connector to the faucet/tap (hand tighten only).
3. Connect the controller male hose thread connection to your system.



3

## 4. IRRIGATION PROGRAMMING

### Energy saving feature

This controller has an energy saving feature which enables the battery to last for at least two years.

To save energy, the display on the LCD screen disappears after a few minutes if no buttons are pressed. Pressing any button causes the display to reappear, without changing the configured program.

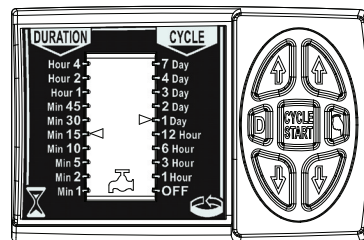
4

### Regular irrigation program

1. Open the controller by rotating the controller body.
2. Select the irrigation duration using the arrow buttons  $\downarrow$   $\uparrow$  on the left side of the keypad to increase or decrease irrigation time. An arrow  $\leftarrow$  will appear on the screen next to the selected duration.
3. Select the irrigation cycle time (time between irrigation starts) using the arrow buttons  $\downarrow$   $\uparrow$  on the right side of the keypad. An arrow  $\rightarrow$  will appear on the screen next to the selected cycle time.

5

4. Press **CYCLE START** in the middle of the keypad to start irrigation. The faucet/tap opens and irrigation will commence for the configured duration and cycle times. When the faucet/tap opens you will hear a click and  $\mathbf{A}$  will appear on the screen.



6

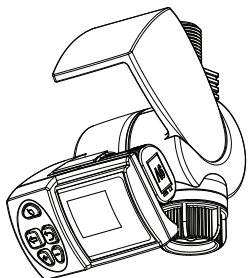
### Programming example:

- Set the irrigation duration to "Min 15" and the irrigation cycle time to "1 Day".
- When you press **CYCLE START** the faucet/tap opens immediately, and remains open for 15 minutes. The valve will open at the same time every day for a duration of 15 minutes.
- Irrigation will start every day at the time you pressed the button on the first day.

7

E-Mail: info@galconc.com, www.galconc.com  
Kfar-Bium 12150, Tel. 972-4-690-0222, Fax. 972-4-690-2727

Computerized Control Systems



Computerized  
Irrigation Controller  
Instructions

GALCON 1100EZ

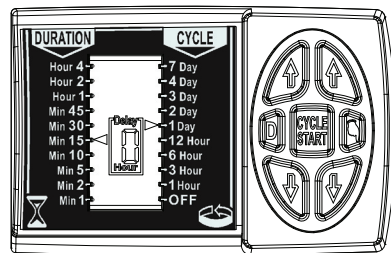
### Delayed irrigation program

You can use the Delay option to postpone the first irrigation and cycle routine. This option is useful if you wish to start first irrigation in the middle of the night or when you are not near the controller.

1. Select the desired duration and cycle time as explained above.
2. Press **Ⓢ** on the left side of the keypad. A blinking 0 appears on the LCD screen.
3. Press **Ⓢ** again to set the desired delay in units of hours. You can select any number between 0 - 12.
4. Press **Ⓢ**. The controller starts the countdown. During countdown the time delay value stops blinking and instead the frame starts blinking. Irrigation and cycles will start at the end of the delayed time. When the faucet/tap opens you will hear a click and **Ⓢ** will appear on the screen.

8

5. In order to cancel or change the delay, press **Ⓢ** to set the delay time to 0 or to another value, and press **Ⓢ**.



9

### Computerized manual operation

You can use the Manual option to manually start irrigation immediately for the programmed irrigation duration. The valve will close automatically at the end of the configured irrigation duration. Note that the original irrigation program will continue to run as configured.

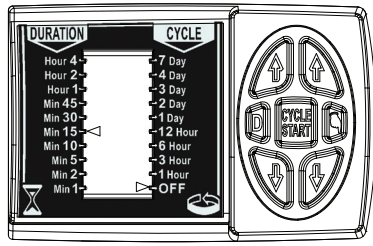
1. Press **Ⓢ** on the right side of the keypad to start irrigation for the configured duration. As the faucet/tap opens you will hear a click and **Ⓢ** will appear on the screen.
2. To stop irrigation before the end of the configured duration, press **Ⓢ** again.

10

### Rain Off position

To stop the irrigation program, set the cycle to the OFF position using the arrow buttons **⬇** **⬆** on the right side of the keypad.

- Keep in mind:
- You can activate the Manual irrigation option even when the controller is in the OFF position.
  - If you select the OFF position during irrigation, the action will take effect only after irrigation is finished. However, you can close irrigation at any time by pressing the manual **Ⓢ** button.
  - To start irrigation again, set the duration and cycle, and press **Ⓢ**.



11

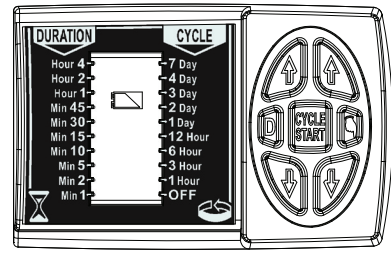
## 6. MAINTENANCE

- Remove the battery if the irrigation controller will not be used for a prolonged period.
- The controller contains an internal filter, which has to be removed and cleaned every few months (depending on the water cleanliness and frequency of use).
- The recommended water pressure is 1- 8 bar (14.5-133 PSI).

12

### LOW BATTERY WARNING

- A blinking battery icon **Ⓢ** appears on the display when the battery is low. This indicates that the battery still contains a limited amount of energy for valve operation. The battery should be replaced promptly. If the battery is not replaced, the irrigation controller will continue to open the valve eight more times according to the program. It will then suspend the program and an arrow **➡** will appear on the screen next to "OFF".
- While the battery is being changed, program data is retained for 30 seconds.



13

14