

DripWorks®



Quality Drip Systems Since 1991

SAVE
10% OFF
Landscape Lights
see page 35
Code DWM23
One time Use



2023 Product Catalog
Dripworks.com | 844.849.9573

TABLE OF CONTENTS

Listed by product

Adapters	22-23
Bird Suet and Cages	29
Complete Irrigation Kits	4-7
Composting	36
Drip Tape	12
Emitters	
Basic Drip Emitters	25
Pressure Compensating	26-27
Emitter Tubing ½"	9
Fertilizer Injectors	37-39
Fittings	
Barbed Fittings	24
Drip Tape Fittings	13
Easy Loc Fittings	10-11
⅛" and ¼" Microfittings	15
Manifold Fittings	49
PVC Fittings & Accessories	46-47
Filters	
Garden Filters	18
Large Filters	19-20
Freeze Protection	43
General Information	28
Greenhouse Watering	40-41
Greenhouse Material	42
High Tunnels	42
Hose Fittings	22-23
Landscape Lighting	35
Magnetic Water Conditioning	36
Mainline Tubing	8
Micro Tubing	16
Pond Liners & Pond Care	44-45
Pressure Regulators	21
Punches	16
Soaker Dripline ¼"	14
Sprayers	
Adjustable Sprayers & Shrubblers	30-31
Mini-Sprinklers	32
Pressure Compensating Sprinklers	34
Support Stakes & Hold Downs	17
Timers	
Bluetooth	51
Battery DC	51-53
Electric AC	54
Solar & Windup	55
WiFi	50
Valves	
Battery (DC)	48
Electronic (AC)	48
Manual Ball Valves	46



Welcome to the 2023 version of the DripWorks catalog. We are very excited to introduce to you our new product lines and our new DripWorks team. It has been our belief since we started in 1991 that drip irrigation is the most efficient method of watering. We have enabled farmers, homeowners, viticulturalists, herbalists, plant nursery owners, and landscapers to have a reliable source for the highest quality irrigation products.

By automating and installing a drip system you can easily be saving time, money, and water. In one or two seasons you can make back the cost of purchasing a system by lowering your water bills by up to 60%.

The DripWorks website dripworks.com is an invaluable resource for those who want to purchase a system. Check out the Gallery of Plans, How-To-Videos, FAQs, or use our "chat" service to answer your questions. You can also check us out on YouTube, Facebook, or Instagram.

If you need to call DripWorks with a question, our experienced representatives will clearly help direct you to the right products for your specific application. Our customers have appreciated the human touch that DripWorks has always offered, and so will you.

The durable and long-lasting products that DripWorks offers will help you continue to be a sustainable gardener while your plants and gardens thrive!

DripWorks





ALWAYS HERE FOR YOU

Our experts know their stuff and
they're here to help.

Live chat at [Dripworks.com](https://www.dripworks.com)
or 844.849.9573

Mon-Fri, 8am to 4pm PST.



FREE ONLINE RESOURCES

Find how-to videos, drip
planning guides, FAQs, and
more on our Resources page at
[Dripworks.com](https://www.dripworks.com)



ORDERING IS EASY!

Place your DripWorks order
online or give us a call.

[Dripworks.com](https://www.dripworks.com)
844.849.9573



JOIN OUR COMMUNITY

Keep up with DripWorks on
Facebook, Instagram, YouTube
and Pinterest.

@DripWorksUSA



SIZED TO FIT YOUR NEEDS

Setting up an irrigation system is never a “one size fits all” project. You need options and we offer them. Head to Dripworks.com to shop our full line of parts and learn more about the different kit sizes we offer.

A kit isn’t completely efficient without a timer. Shop at DRIPWORKS.COM

BEST SELLER!

DRIP TAPE KITS FOR ROW CROPS

For long rows and large raised beds, drip tape is a favorite for backyard gardeners.

View
Irrigation
Kits and
Greenhouse
Misters



Small Drip Tape Kit

Waters 10 20' rows. (Expands to 1,200' of low-flow drip tape.)

- 200' of Drip Tape
- Filter and Pressure Regulator
- 50' of ½" Mainline Tubing
- ½" Mainline and Drip Tape Fittings
- Punch and Hold Down Stakes

KDT1	Small Kit.....	\$115.95
KDT1-T	Kit plus Timer	\$195.95

Medium Drip Tape Kit

Waters 20 100' rows (¼ acre*).

- 2,000' of Drip Tape
- Filter and Pressure Regulator
- 100' of ½" Mainline Tubing
- ½" Mainline and Drip Tape Fittings
- Punch and Hold Down Stakes
- High Flow Hose Y**

KDT2	Medium Kit.....	\$429.95
KDT2-T	Kit plus Timer	\$539.95

Large Drip Tape Kit

Waters 40 100' rows (¼ acre*).

- 4,000' of Drip Tape
- Filter and Pressure Regulator
- 200' of ¾" Mainline Tubing
- ¾" Mainline and Drip Tape Fittings
- Punch and Hold Down Stakes
- High Flow Hose Y**

KDT3▲	Large Kit.....	\$595.95
KDT3-T▲	Kit plus Timer	\$849.95

Drip Tape is low-flow, 15 mil, emitters spaced 8" OC. *Acreage estimations based on 33" row spacing. Your situation may vary.
**High Flow Hose Y (HYVHPL, p. 22) is used to divide the system into two zones. Note: Use a high-flow timer for the Medium and Large Drip Tape Kits.

COMPLETE GARDEN BED IRRIGATION KITS

These kits include all of the parts you need to go from your faucet to your garden beds. Each kit includes our popular and versatile ¼" Soaker Dripline. Soaker Dripline is flexible and can be used in straight rows, curved around plants and snaked through dense planting areas.



GARDEN BED KITS

Everything you need to create beds in any shape or size.

Small Garden Bed Kit

Waters up to 3 Beds.**

- 100' Soaker Dripline*
- ½" and ¼" Fittings
- 50' of ¼" Tubing
- Filter and PSI Regulator
- Punch and Hold Downs
- 50' of ½" Mainline Tubing

KGB1 Small Kit \$89.95
KGB1-T Kit plus Timer** \$159.95

Medium Garden Bed Kit

Waters up to 9 Beds.**

- 300' Soaker Dripline*
- ½" and ¼" Fittings
- 100' of ¼" Tubing
- Filter and PSI Regulator
- Punch and Hold Downs
- 100' of ½" Mainline Tubing

KGB2 Medium Kit \$139.95
KGB2-T Kit plus Timer** \$219.95

Large Garden Bed Kit

Waters up to 18 Beds.**

- 600' Soaker Dripline*
- ¾" and ¼" Fittings
- 200' of ¼" Tubing
- Filter and PSI Regulator
- Punch and Hold Downs
- 250' of ¾" Mainline Tubing

KGB3▲ Large Kit \$289.95
KGB3-T▲ Kit plus Timer** \$419.95

*Emitters Spaced 12" OC. **Based on 4'x8' beds. Note: We recommend a high-flow timer with Large Kit (p. 51).

DRIP IRRIGATION KITS FOR UNIQUE SITUATIONS

Careful thought and years of experience helping customers design their irrigation systems led us to come up with these kits with a focus on specific types of gardens. Our kits are simple to install, and they come with easy-to-follow instructions and online videos to give you confidence and clear instruction.



ROSE AND SHRUB KITS

Ideal for bushes, shrubs, or small trees.

Small Rose and Shrub Kit

Waters up to 15 bushes.

- 15 PC Shrubblers
- Filter and PSI Regulator
- ¼" and ½" Fittings
- Punch and Hold Down Stakes
- 50' of ½" Mainline Tubing

KRS1	Small Kit.....	\$74.95
KRS1-T	Kit plus Timer	\$149.95

Medium Rose and Shrub Kit

Waters up to 30 bushes.

- 30 PC Shrubblers
- Filter and PSI Regulator
- ¼" and ½" Fittings
- Punch and Hold Down Stakes
- 100' of ½" Mainline Tubing

KRS2	Medium Kit.....	\$119.95
KRS2-T	Kit plus Timer	\$195.95

If it needs to be watered, we've got the kits to do it at DRIPWORKS.COM

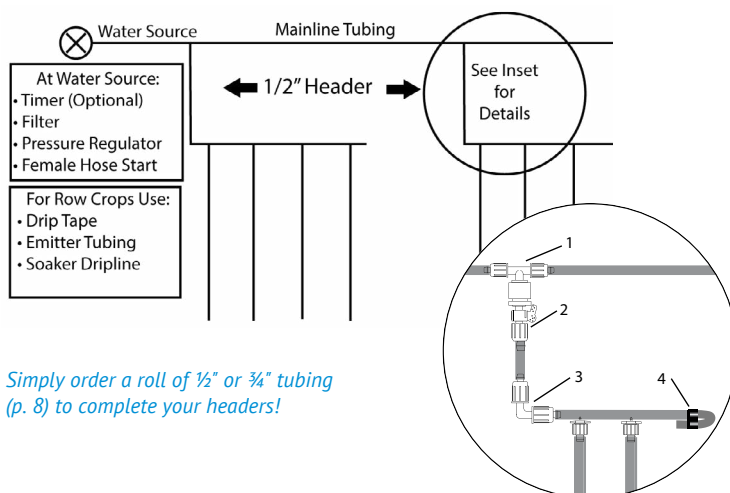
EASILY CREATE ZONED IRRIGATION WITH YOUR DRIP TAPE KITS

Adding header lines is a quick way to divide your irrigation system into multiple, smaller sections (zones).

Header package includes:

1. Female Tee (to branch off your mainline)
2. Male Adapter with Shutoff (to shut off the zone)
3. 90° Elbow (to make a right angle turn)
4. Figure Eight End (to seal off the end of the header)

KHA12	½" Mainline.....	\$10.95..	\$89.95/10
KHA34	¾" Mainline	\$18.95..	\$159.95/10



Simply order a roll of ½" or ¾" tubing (p. 8) to complete your headers!

INDIVIDUAL PLANT KITS

For any garden; just place emitters where needed.

Small Individual Plant Kit

Waters up to 60 plants.

- 60 Take-Apart Emitters
- Filter and PSI Regulator
- ¼" and ½" Fittings
- Punch and Hold Down Stakes
- 50' of ½" Mainline Tubing

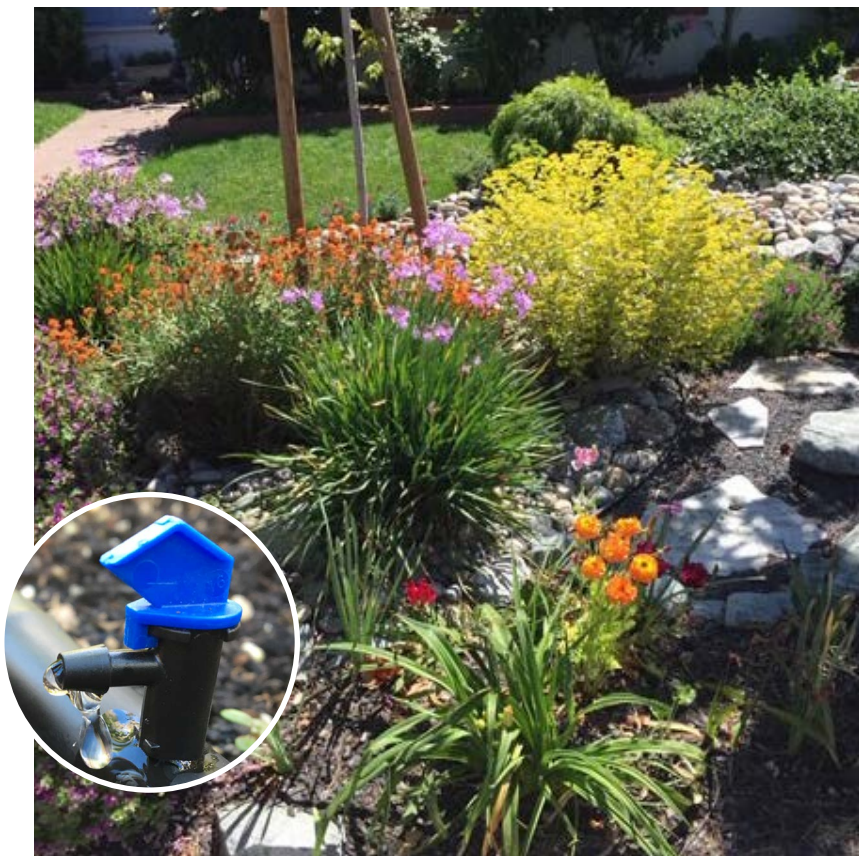
KIP1 Small Kit \$84.95
KIP1-T Kit plus Timer \$169.95

Medium Individual Plant Kit

Waters up to 140 plants.

- 140 Take-Apart Emitters
- Filter and PSI Regulator
- ¼" and ½" Fittings
- Punch and Hold Down Stakes
- 100' of ½" Mainline Tubing

KIP2 Medium Kit \$144.95
KIP2-T Kit plus Timer \$224.95



DECK GARDEN KITS

Quick, easy setup frees you from hand watering planters and pots.

Small Deck Garden Kit

Waters up to 45 pots.

- 100' of Soaker Dripline
- 20 Pot Drippers
- Filter and PSI Regulator
- ¼" and ½" Fittings
- Punch and Hold Down Stakes
- 50' of ½" Mainline Tubing

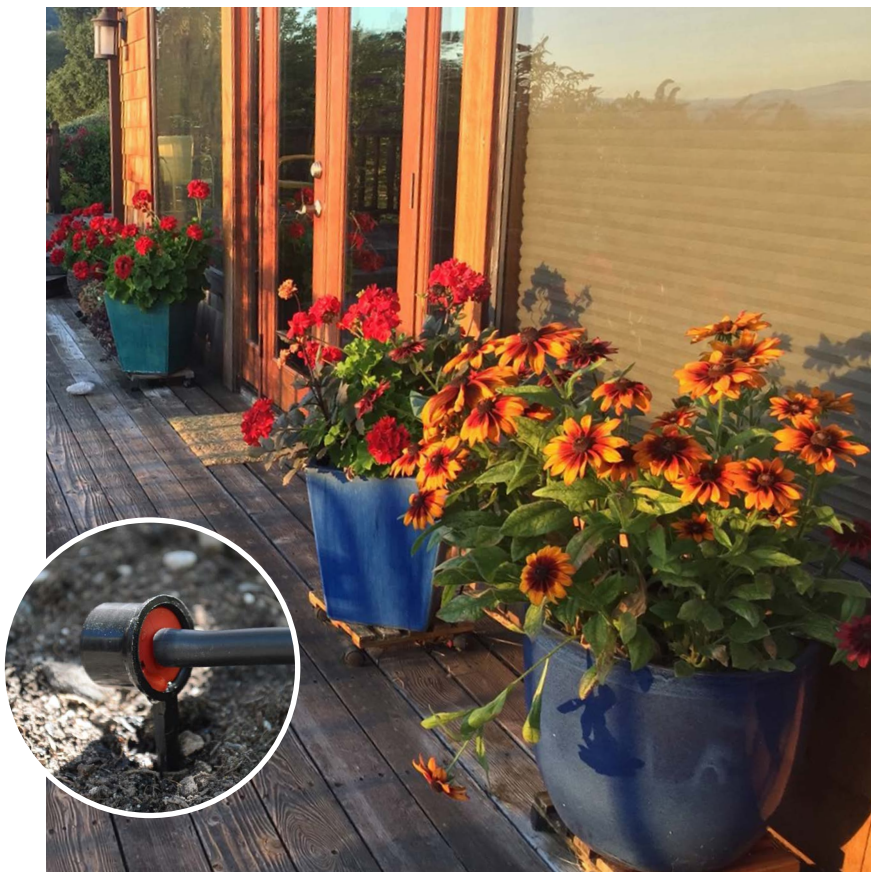
KDG1 Small Kit \$94.95
KDG1-T Kit plus Timer \$174.95

Medium Deck Garden Kit

Waters up to 180 pots

- 300' of Soaker Dripline
- 80 Pot Drippers
- Filter and PSI Regulator
- ¼" and ½" Fittings
- Punch and Hold Down Stakes
- 100' of ½" Mainline Tubing

KDG2 Medium Kit \$204.95
KDG2-T Kit plus Timer \$284.95





MAINLINE TUBING

This flexible, low-density polyethylene tubing is the foundation of a drip irrigation system. Simply punch holes in the strong yet pliable material to insert emitters, transfer barbs, or sprayers; then shape into straight line or curved setups.



½" Mainline Tubing

Measures almost ¾" in diameter.
Recommended flow rate is 0–240 gallons per hour (GPH). (.600" ID–.700" OD)

1250	50' Roll	\$13.95
12100	100' Roll	\$18.95
12500	500' Roll	\$69.95
121000	1,000' Roll	\$129.95

¾" Mainline Tubing

Measures almost 1" in diameter.
Recommended flow is 0–480 gallons per hour (GPH). (.820" ID–.940" OD)

34100	100' Roll	\$31.95
34250	250' Roll	\$74.95
34500	500' Roll	\$119.95



This polyethylene tubing is not rated for constant pressure. Use Easy Loc or barbed fittings (pp. 10, 11, and 24). Handles up to 50 PSI.



Oval Hose™

Commercial systems use this hose mainly as a high-flow, low-pressure header for Drip Tape. Larger diameter polyethylene is extruded in an oval shape to save space for shipping. Not rated for constant pressure. Uses standard barbed fittings and hose clamps, or 1" Easy Loc fittings for 1" Oval Hose.

Part #	Tubing Size	Roll Size	Maximum Operating Pressure	Flow	Price
F1250	1"	250'	42 PSI	13 GPM	\$98.95
F112150	1½"	150'	21 PSI	35 GPM	\$98.95
F112300	1½"	300'	21 PSI	35 GPM	\$184.95
F2150	2"	150'	21 PSI	73 GPM	\$124.95


irritec
GROWERS CHOICE


1/2" PRESSURE COMPENSATING EMITTER TUBING

The most versatile product for larger plantings! Great for orchards and large growers.

- Greatly reduces installation time
- Perfect for hilly terrain and long rows
- 0.5 or 1.0 GPH pressure compensating emitters
- 600" ID x .700" OD (same size as our 1/2" mainline)
- Pressure range 10–50 PSI

**Watch our how-to videos
at DRIPWORKS.COM**

Part #	Emitter Spacing	Emitter Flow	Roll Size	Flow/100' @10-50 PSI	Max Row Length	Price
DET95	9"	0.5 GPH	100'	67 GPH	300'	\$39.95
DET95-500	9"	0.5 GPH	500'	67 GPH	300'	\$174.95
DET91	9"	1.0 GPH	100'	133 GPH	190'	\$39.95
DET91-500	9"	1.0 GPH	500'	133 GPH	190'	\$174.95
DET125	12"	0.5 GPH	100'	50 GPH	450'	\$34.95
DET125-500	12"	0.5 GPH	500'	50 GPH	450'	\$149.95
DET121	12"	1.0 GPH	100'	100 GPH	250'	\$34.95
DET121-500	12"	1.0 GPH	500'	100 GPH	250'	\$149.95
DET181	18"	1.0 GPH	100'	67 GPH	350'	\$32.95
DET181-500	18"	1.0 GPH	500'	67 GPH	350'	\$129.95
DET241	24"	1.0 GPH	100'	50 GPH	400'	\$29.95
DET241-500	24"	1.0 GPH	500'	50 GPH	400'	\$119.95
DET361	36"	1.0 GPH	100'	33 GPH	550'	\$24.95
DET361-500	36"	1.0 GPH	500'	33 GPH	550'	\$109.95

Soil Type	Annuals, Ground Covers, Gardens		Large Bushes, Shrubs, Beds, Perennials	
	Row Spacing	Emitter Spacing	Row Spacing	Emitter Spacing
Medium Sand	9"	9" or 12"	15" to 18"	12"
Loam	9" to 12"	12" or 18"	18" to 24"	18"
Clay Loam	12" to 18"	18"	20" to 30"	18"
Clay	24"	18"	24" to 36"	24"

irritec



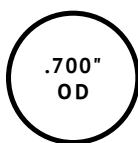
EASY LOC FITTINGS

Easy Loc connectors offer maximum design freedom and solid reliability. You'll find all the styles you need to control the flow when and where you need it.

Get helpful tips on using Easy Loc Fittings at [DRIPWORKS.COM](https://www.drripworks.com)

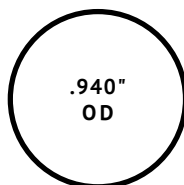
WHAT'S YOUR TUBING SIZE?

Simply determine your standard tube size and choose the Easy Loc fittings to match.



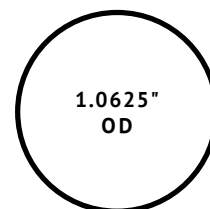
½" EASY LOC FITTINGS
Compatible with ½" drip tubing .680"-
.720" OD.

Try our ½" Mainline Tubing (p. 8) and
½" Pressure Compensating
Emitter Tubing (p. 9).



¾" EASY LOC FITTINGS
Compatible with ¾" drip tubing .880"-
.970" OD.

Try our ¾" mainline tubing (p. 8).



1" EASY LOC FITTINGS
Compatible with 1" oval hose
1.025"-1.085" OD.

Try our 1" Oval Hose (p. 8).

1/2", 3/4", AND 1" EASY LOC FITTINGS

**Female Hose Start with Swivel**

Attach mainline tubing to a faucet, hose end, or male hose threads of a filter or adapter. A common way to start a system.

ELFH	1/2"	\$1.39
ELFH34	3/4"	\$2.95
ELFH1	1"	\$5.35

**Coupler**

For joining two pieces of mainline tubing. A necessary repair part.

ELC	1/2"	\$0.89
ELC34	3/4"	\$2.49
ELC1	1"	\$2.79

**Tee**

Use to branch off mainline tubing.

ELT	1/2"	\$2.19
ELT34	3/4"	\$5.95
ELT1	1"	\$7.49

**Elbow (90° bend)**

Use to go around a corner that might kink the mainline tubing.

ELL	1/2"	\$1.69
ELL34	3/4"	\$3.89
ELL1	1"	\$5.29

**Male Hose End with Cap**

Used to end a line. The screw-off cap makes it easy to flush lines.

ELMC	1/2"	\$1.15
ELMC34	3/4"	\$2.29
ELMC1	1"	\$2.69

**Male Hose End**

To flush your lines after each watering, use with a flush valve (VFH, p. 22).

ELMH	1/2"	\$0.79
ELMH34	3/4"	\$1.59

**Male Pipe End**

Use this male pipe thread fitting to connect tubing to pipe threads.

EL12M	1/2"	\$0.74
EL34M34	3/4"	\$1.49
EL1MP1	1"	\$1.95

**1/2" x 1/4" Barb**

Create a 1/2" branch line without a Tee. Flow through is approximately 80 GPH.

EL14B	1/2" x 1/4"	\$1.49
-------	-------------	--------

**Valve**

A full port inline valve with an easy-to-grip handle.

ELV12	1/2"	\$2.29
ELSO34	3/4"	\$4.95
ELTCV1	1"	\$8.49

**Reducing Coupler**

Use this reducing coupler to adapt to a larger or smaller tubing.

ELRC	3/4" x 1/2"	\$2.69
ELRC134	1" x 3/4"	\$2.95

**Reducing Tee**

This tee fitting is used to adapt down from a larger tubing size, when branching into smaller tubing.

ELRT	3/4" x 3/4" x 1/2"	\$5.49
ELRT112	1" x 1/2"	\$6.95
ELRT134▲	1" x 3/4"	\$6.95

**Reducing Elbow**

Use this reducing elbow to adapt to a smaller size tubing.

ELRL	3/4" x 1/2"	\$4.29
------	-------------	--------

**Female Hose Tee with Swivel**

An easy way to attach two mainlines to one hose connection.

ELFT	1/2"	\$2.29
ELFT34	3/4"	\$4.95

**Male Hose Tee**

Use this tee fitting to attach to any hose thread fitting.

ELMT	1/2"	\$1.95
ELMT34	3/4"	\$2.89

**Female Hose Elbow with Swivel**

When there is no room to use a straight fitting to start a system.

ELFL	1/2"	\$1.71
ELFL34	3/4"	\$3.79

**Cross**

A 4-way fitting to attach mainline tubing and connect to multiple rows.

ELX	1/2"	\$3.59
ELX34	3/4"	\$8.95

**Easy Loc Socket**

Glues over PVC pipe of the same size or into larger slip fitting.

EL34S	1/2" x 3/4" PVC	\$1.09
EL34SPIG1	3/4" x 1" PVC	\$1.69
EL1SOC	1"	\$1.95

**Spigot**

These fittings will glue into a PVC fitting of the same size.

EL12S	1/2"	\$1.14
ELA34	3/4"	\$1.59
EL1SPIG1	1"	\$1.89

DRIP TAPE



AQUA-TRAXX[®]
AZUL[™]

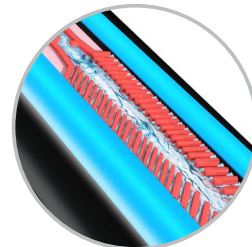


AQUA-TRAXX DRIP TAPE

GROWERS CHOICE

Aqua-Traxx Azul is the latest generation of tape technology from Toro. It features an innovative emitter design that protects the labyrinth from debris and maximizes clog resistance making it the perfect method of irrigating row crops and raised beds.

- Low-cost, effective watering for row crops and raised beds
- Superb watering efficiency and uniformity
- Ideal for above ground, mulched or buried applications
- Great for low-pressure systems, works down to 4 PSI
- Requires only 120 mesh filtration (filters, pp. 18, 19, and 20)
- Use with drip tape fittings (p. 13)
- Low operating pressures, see chart below (regulators, p. 21)
- Typically lasts up to 7 years if covered, and 2–5 years on surface



Part #	Mil	Emitter Spacing	Flow Type	Flow per 100' @ 8 PSI	Roll Length	Max Row Length	Price Each
15 Mil-Maximum Pressure 15 PSI							
TAZ1508HSR	15	8" OC	High	40 GPH	1,000'	200'	\$129.95
TAZ1508LSR	15	8" OC	Low	20 GPH	1,000'	380'	\$129.95
TAZ1508H	15	8" OC	High	40 GPH	4,000'	200'	\$339.95
TAZ1508L	15	8" OC	Low	20 GPH	4,000'	380'	\$339.95
TAZ1512H	15	12" OC	High	27 GPH	4,000'	280'	\$349.95
TAZ1512L	15	12" OC	Low	13 GPH	4,000'	550'	\$349.95
8 Mil-Maximum Pressure 15 PSI							
TAZ804SR	8	4" OC	Med	60 GPH	2,000'	140'	\$139.95
TAZ804	8	4" OC	Med	60 GPH	7,500'	140'	\$349.95
TAZ808H	8	8" OC	High	40 GPH	7,500'	200'	\$349.95
TAZ808L	8	8" OC	Low	20 GPH	7,500'	380'	\$349.95
6 Mil-Maximum Pressure 12 PSI							
TAZ606	6	6" OC	Low	27 GPH	10,000'	280'	\$379.95

DRIPWORKS DRIP TAPE

Packaged in a convenient, easy-to-store dispenser. The precision-designed flow path reduces clogging and the slit outlet prevents back suction of soil. To create a tight seal, be sure tape is warm and pliable before attaching the 5/8" start fittings (LSB/LSBSO) and end fittings (LSGS/LSPLUG).

- Superior clog resistance
- Works above ground, mulched or buried
- Use with 5/8" tape fittings
- Lasts years; lifespan considerably increased if tape is covered

Part #	Mil	Emitter Spacing	Flow Type	Roll Length	Price Each
TDE804100	8	4" OC	Medium	100'	\$18.95
TDE1508L100	15	8" OC	Low	100'	\$18.95
TDE1508H100	15	8" OC	High	100'	\$18.95



TOP QUALITY TAPE LOC FITTINGS


irritec

MAKE THE RIGHT CONNECTION

All of these easy-to-install fittings work with most brands of drip tape.



Tape x 1/4" Barb

For attaching tape to mainline tubing. Simply punch a 1/4" hole in the mainline tubing, connect the tape to the tape fitting end, and insert the barbed end into the punched hole. Allows a flow of approx. 80 GPH at 10 PSI.

LSB \$0.59



Tape x 1/4" Barb with Valve

For shutting off individual lines. The 1/4" barb's flow is approx. 80 GPH at 10 PSI.

LSBSO.....\$2.29



Tape x Female Hose Swivel

For attaching tape to a hose or hose bib or any other male hose threads.

LSF \$1.89



Tape Coupler

For joining two sections of tape or repairing a line.

LSC \$0.89



Tape x 1/2" Male Pipe Thread with Valve

This fitting connects a line of drip tape to 1/2" female pipe threads (FPT). It also has a built-in shutoff valve to allow the line of drip tape to be manually turned off.

LSV12M \$2.29



Tape Tee

The Tape Loc Tee will branch a line of drip tape off of an existing line of drip tape. Simply cut the original line of tape and insert the Tape Tee fitting.

LST \$2.39



Tape x PVC Adapter

For running tape directly off a PVC header. Glues onto 1/2" PVC pipe or into a 3/4" PVC fitting.

LSSOC.....\$1.09



Tape x 1/2" Male Pipe Threads

When teeing off PVC or large poly pipe, use this for a high-flow, removable row beginning. Ideal for long runs.

LS12M \$0.89



Tape x Male Hose Thread

This fitting is used to connect a line of drip tape to female hose threads.

LSM.....\$0.82



Tape Elbow

For making sharp turns in a garden. Tape will not go around a 90° corner.

LSL \$2.19



Tape x Easy Loc

For attaching tape to the end of 1/2" mainline tubing.

LSELC \$1.65



Tape Coupler with Valve

The Tape Coupler with Valve can be used to create a shutoff anywhere in a line of drip tape. It can also be used as a repair coupler to patch two sections of drip tape together.

LSCSO.....\$2.29



Tape x Male Hose End with Cap

This fitting is used to end a line. The screw-off cap makes it easy to flush lines.

LSMC. \$1.29



Tape End Plug

This fitting is used to seal a row of tape. A loop on the end provides a sure grip for easy handling.

LSPLUG \$0.49



Tape Grip Sleeve End

The grip sleeve end is an economical way to end a line of drip tape.

LSGS.....\$3.95/10

VERSATILE SOAKER DRIPLINE

Soaker Dripline is used in all of the garden beds at the DripWorks demonstration garden for row crops, containers, and ornamental plantings.



1/4" SOAKER DRIPLINE

Ideal for small and medium garden beds or containers

- Flexible, easy to use
- Emitters pre-installed every 6", 9", or 12"
- Great for gravity-fed systems, garden beds, containers, and border gardens
- Maximum operating pressure 30 PSI
- Works down to 2 PSI
- Uses standard 1/4" fittings (p. 15)

Part #	Roll Length	Price Each
6" Spacing		
DSD6L	50'	\$14.95
DSD6	100'	\$21.95
DSD6500	500'	\$102.95
9" Spacing		
DSD9	100'	\$19.95
DSD9500	500'	\$84.95
12" Spacing		
DSD12	100'	\$14.95
DSD12500	500'	\$71.95

Soaker Dripline Flow Per 100'

Spacing	Max Row Length	Flow (GPH)		
		10 PSI	20 PSI	30 PSI
6"	18'	84	120	160
9"	25'	56	80	107
12"	34'	42	60	80
Flow per emitter:		0.42	0.60	0.80

To prevent runoff on clay soils, reduce row spacing and water more frequently for shorter durations.



Note: To ensure even flow, we recommend using a regulator with Soaker Dripline. See p. 21 for our 10–30 PSI regulators.



Miracle Insert Tool

A "must" for landscapers! Saves time and prevents sore hands when inserting goaf plugs or transfer bars into 1/4" tubing or Soaker Dripline. Not a punch.

PUINS..... \$24.95

1/4" MICRO-FITTINGS

These fittings are used with all standard 1/4" micro-tubing and Soaker Dripline. They are most frequently inserted into 1/2" and 3/4" mainline tubing using one of our punches.

Control your flow with one of our favorite 1/4" fittings



14VFB



14VFT

Micro-Flow Valves

Make any mini-sprinkler or sprayer adjustable. Also use in place of transfer bars to control the flow to individual plants. Use barbed valve with 1/4" tubing and Soaker Dripline; threaded valve with Rigid Risers.

14VFB-5	Barbed Valve	\$3.49/5
14VFB-20	Barbed Valve	\$12.95/20
14VFB-50	Barbed Valve	\$29.95/50
14VFT-5	Threaded Valve	\$3.49/5
14VFT-50	Threaded Valve	\$29.95/50

Transfer Barb

Our most common connector for attaching 1/4" tubing to mainline (1/2" or 3/4") tubing. Also acts as a coupler for joining two pieces of 1/4" tubing.

14TB-10	\$1.49/10
14TB-50	\$6.95/50

Long Transfer Barb

A long body and tapered ends make this 1/4" transfer barb easier to handle than the short barb.

14LTB-10	\$1.49/10
14LTB-50	\$6.95/50

Two-Way Goof Plugs *Most popular!*

A plug with two different-sized barbs used to repair small or large holes in mainline tubing. A must if you punch a hole in the wrong place or need to remove an emitter from your mainline tubing.

14GP2-10	\$0.79/10
14GP2-100	\$5.95/100

One-Way Goof Plugs

The same size plug as the small end of the 2-way Goof Plug. For patching a hole where a 1/8" or 1/4" barb was removed. Sits flat on the mainline tubing. Use to end a line of 1/4" tubing or Soaker Dripline.

14GP1-10	\$0.79/10
14GP1-100	\$5.95/100

Threaded Connector

Thread into mainline tubing to keep short Rigid Risers in an upright position. (10-32 threaded base.)

14WTTB-10	\$1.69/10
14WTTB-50	\$7.49/50

Cross

A four-way fitting for 1/4" tubing.

14X-10	\$3.95/10
14X-50	\$17.95/50



Elbow

Use anywhere you need tubing to turn a 90° angle.

1490-10	\$1.95/10
1490-50	\$7.95/50



Tee

For branching off 1/4" tubing.

14T-10	\$1.95/10
14T-50	\$7.95/50

Threaded Barb

Thread by barb connector. Used to connect Rigid Risers to mainline or 1/4" tubing. Can be used to connect 1/4" tubing to PVC. (10-32 threaded base.)

14WTBC-10	\$1.95/10
14WTBC-50	\$7.49/50



Female Hose Thread x 1/4" Fittings

Use these fittings to connect a single line of 1/4" poly tubing to the male hose threads on a faucet, filter, timer, or hose.

H14CP	With Screen Washer	... \$2.39
-------	--------------------	------------



Bug Plug

When using 1/4" tubing on the outlet side of emitters, a Bug Plug at the end allows water to flow out but keeps bugs from getting in and clogging lines. Not for regulating flow!

14BUG	\$1.39/10
14BUG	\$10.95/100



14RTB



18T



18TB

1/8" MICRO-FITTINGS

For installing Spot Spitters. Use a length of 1/8" tubing and a 1/8" transfer barb (18TB) or a reducing transfer barb (14RTB) to connect the emitter to the mainline tubing. Find our Spot Spitters at Dripworks.com.

18TB-10	1/8" Transfer Barb	\$1.49/10
18TB-50	1/8" Transfer Barb	\$6.49/50
14RTB-10	1/4" x 1/8" Transfer Barb	\$2.39/10
14RTB-50	1/4" x 1/8" Transfer Barb	\$9.95/50
18T-10	1/8" Tee	\$1.95/10
18T-50	1/8" Tee	\$8.95/50

SPECIALTY HOLE PUNCHES & CUTTERS

The tools you need to easily create holes or make quick work of cutting tubes to length.

BEST SELLER!



Miracle Punch: "The Ultimate Punch"

This punch works like a staple gun. Slip the ½" or ¾" tubing completely into the channel and squeeze the handle. Makes a big job much easier. Popular with landscapers and commercial growers.

PUM Regular ¼" Punch . . . \$14.95
PUMK Large Hole Punch* . . . \$14.95

*For larger emitters such as Vibra-Clean, online at Dripworks.com



Punch N' Cut

Multi-purpose tool will punch a ¼" hole. Use with any size polyethylene mainline. Cutting tool will cut mainline tubing and PVC schedule 40 up to 1". One tool does it all.

PUPCUT \$15.95



Pocket Punch

Will easily punch holes for ¼" fittings or emitters into ½" mainline tubing. Has a holder to help when installing transfer barbs or certain emitters.

PUPKT \$8.95



Purple Handle Punch

This is a punch with a comfortable, ergonomic handle. It is easy to use and makes a clean hole. Use for ¼" fittings and ⅝" tape fittings. This punch has a hardened steel tip and can be sharpened with a grinding wheel.

PUPUR \$9.95



Tubing Cutter by Hydro-Rain

This tool is for cutting polyethylene tubing up to 1¼". Its sharp blade can also cut rubber and plastic pipe!

POLYCUT▲ \$15.95



Orange Handle Punch

Use to make a hole for ¼" fittings and Tape x ¼" barb fittings (LSB or LSBO). Use other end to help insert Mini-Jets into ¼" poly tubing.

PUO \$9.95



Adjustable Punch

Adjustable tubing guide accepts ½", ¾" polyethylene tubing and 1" or 1½" Oval Hose. Includes large tip (PUADJTLG) for making holes slightly larger than standard ¼" size (LSB, LSBSO, and EL14B fittings). Standard ¼" tip (PUADJTSM) available at Dripworks.com.

PUADJ* \$24.95

*Adjustable Punch tool may vary in color.

Find the right punch tool for the work you need to do at **DRIPWORKS.COM**

MICRO TUBING LINE FOR EVERY NEED



Stock up on micro tubing in the sizes and materials you reach for most often. Available in rolls of various lengths and flow rates for all your system requirements. Simply insert fittings and emitters into the end. No clamps needed.



⅛" Polyethylene

(.125" ID–.187" OD)
Flow 15 GPH 30 PSI Max.

18100	100' Roll	\$5.95
18500	500' Roll	\$24.95
181000	1,000' Roll	\$39.95



¼" Polyethylene

(.170" ID–.250" OD) This is the standard ¼" tubing used with most emitters, mini-sprinklers, and sprayers. Flow 30 GPH 30 PSI Max.

1450	50' Roll	\$4.95
14100	100' Roll	\$7.95
14500	500' Roll	\$34.95
141000	1,000' Roll	\$64.95



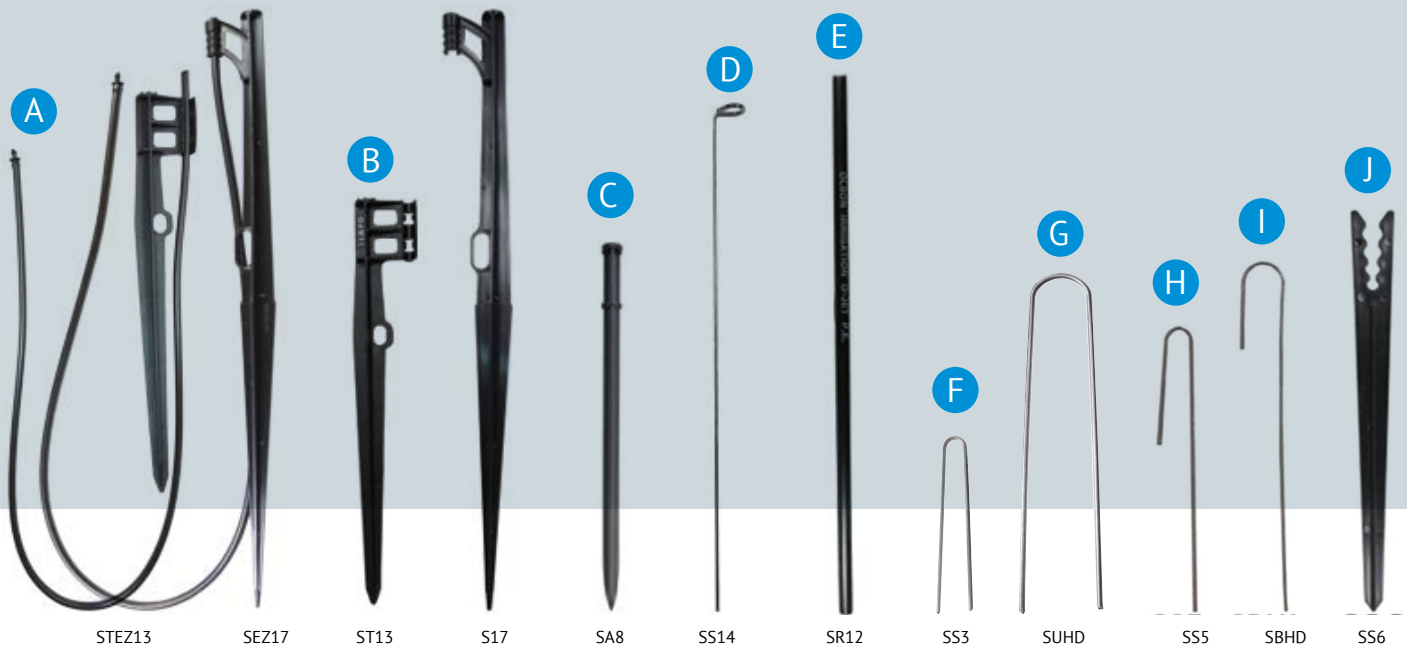
¼" Vinyl

(.160" ID–.220" OD) Softer and more flexible than polyethylene. Do not use at high pressure. Flow 30 GPH 30 PSI Max.

1450V	50' Roll	\$5.95
14100V	100' Roll	\$8.95
14500V	500' Roll	\$39.95
141000V	1,000' Roll	\$79.95

KEEP YOUR SYSTEM IN PLACE

Stakes keep your tubing elevated and hold downs keep it in place.

**A. EZ Stake**

A clip stake with 3' of heavy-wall vinyl $\frac{1}{4}$ " tubing and transfer barb attached. Just add a sprayer or mister.

STEZ13	13" EZ Stake.....	\$6.95/5	\$119.95/100
SEZ17	17" EZ Stake.....	\$7.95/5	\$119.95/100

B. Clip Stake

Clip holds Rigid Risers or $\frac{1}{4}$ " tubing.

ST13	13" Clip Stake.....	\$2.95/5	\$43.95/100
S17	17" Clip Stake.....	\$4.49/5	\$69.95/100

C. Straight Stake

Slender, streamlined stake has a groove to hold $\frac{1}{4}$ " polyethylene tubing or a Rigid Riser. Not compatible with our $\frac{1}{4}$ " vinyl tubing.

SA8-5	8" Straight Stake.....	\$2.79/5
SA12-5	12" Straight Stake.....	\$3.29/5
SA16-5	16" Straight Stake.....	\$6.95/5
SA21-5	21" Straight Stake.....	\$7.95/5

D. Stabilizer Stake

Metal stake with loop at top for supporting Rigid Risers.

SS14	14" Stabilizer Stake.....	\$3.45/5	\$59.00/100
------	---------------------------	----------	-------	-------------

E. Rigid Riser

A rigid, thick-walled $\frac{1}{4}$ " tube for elevating sprayers or mini-sprinklers. Cut to desired length with pruners or a knife. Support with stabilizer, straight or clip stakes. Use with threaded fittings.

SR12	12" Rigid Riser.....	\$1.25/5	\$23.00/100
SR18	18" Rigid Riser.....	\$1.80/5	\$34.00/100

F. 3" Hold Down

A U-shaped stake to keep $\frac{1}{4}$ " tubing and emitters in place.

SS3-10	\$2.95
SS3-100	\$14.95

G. U-Shaped Wire Hold Downs

Stronger than the SBHD, these 6" galvanized hold downs work well in light or heavy soils. For $\frac{1}{2}$ " and $\frac{3}{4}$ " tubing.

SUHD-10	\$2.95/10
SUHD-100	\$19.95/100

H. 5" Hold Down

A J-shaped stake to keep emitters and $\frac{1}{4}$ " tubing in place.

SS5-10	\$2.95/10
SS5-100	\$14.95/100

I. J-Shaped Wire Hold Downs

For $\frac{1}{2}$ " mainline or drip tape, these 7" stakes are easy to use.

SBHD-10	\$2.95/10
SBHD-100	\$19.95/100

J. 6" Support Stake

For $\frac{1}{4}$ " and $\frac{1}{8}$ " tubing. Stakes elevate and hold micro-tubing, keep bugs and dirt out of tubing and raise emitters for easy inspection.

SS6-10	\$2.49/10
SS6-50	\$9.95/50

K. Support Clamps With Nails

Plastic clamps with stainless steel nails for attaching $\frac{1}{4}$ " or $\frac{1}{2}$ " tubing to wood surfaces.

S14SC-10	Clamps for $\frac{1}{4}$ " Tubing...	\$1.69/10
S14SC-50	Clamps for $\frac{1}{4}$ " Tubing...	\$6.95/50
S12SC-10	Clamps for $\frac{1}{2}$ " Tubing...	\$3.69/10
S12SC-50	Clamps for $\frac{1}{2}$ " Tubing...	\$14.95/50



GARDEN FILTERS

Screen filters remove sediment and debris that can clog a drip system. These Home Garden Screen Filters are commonly used for small to medium size irrigation systems with a relatively clean water supply.

FILTRATION COMPARISON CHART

Mesh	Micron	Sand #
50	280	N/A
100	152	11
150	104	16
200	73	20

There are two common terms used to rate filtering capability. The first is *mesh*, the number of wires per inch. The second is *micron*, the maximum particle size that can pass through. As mesh size increases, micron size decreases.

Browse our full selection of filters at DRIPWORKS.COM



irritec

A. Irritec Hose Thread Y Filters

These home garden filters attach directly to the male hose threads on a faucet, garden hose or timer. Not rated for use under constant pressure. Must be placed after automated timers or valves. Max pressure is 120 PSI. With Stainless Steel Screen/Drain Valve.

FYCH	155 Mesh, 20 GPM \$13.95
FYCH200	200 Mesh, 20 GPM \$13.95

B. Male Pipe Thread Y Filter

These home garden filters attach to female pipe threads. Not rated for use under constant pressure. Must be placed after automated timers or valves. Max pressure is 120 PSI. Use drain valve to flush debris from basin. With Stainless Steel Screen/Drain Valve.

FYCP34155	¾" MPT 155 Mesh, 20 GPM \$13.95
FYCP34200	¾" MPT 200 Mesh, 20 GPM \$13.95
FYCP1155	1" MPT 155 Mesh, 20 GPM \$13.95
FYCP1200	1" MPT 200 Mesh, 20 GPM \$13.95

C. Tee Filter

Use for smaller systems with clean water (9 GPM or less, up to 80 PSI). FHT swivel inlet x MHT outlet. To clean the stainless steel screen, just remove the hose cap and pull it out.

FT	150 Mesh Tee Filter \$11.95
FT200	200 Mesh Tee Filter \$10.95

[Screen replacements available online!](#)





SUPER-SIZED FILTERS

Amiad has a reputation for making some of the best-engineered filters in the world, featuring stainless steel screens and male pipe threads (MPT) on the inlet and outlet. These large filters are designed to handle the constant (static) pressure of being installed before automated timers and valves. Great for debris and sediment.

AMIAD® 2" SUPER "T"

Constant pressure filters with a double-size screen (108 sq. in.) for twice the filtering area.

- Max Flow: 110 GPM
- Max Pressure: 145 PSI

FAM2ST155 155 Mesh . . . \$379.95
FAM2ST200 200 Mesh . . . \$379.95



Shop for replacement screens
at DRIPWORKS.COM



3/4"

1"

1 1/2"

1 1/2" SU

STANDARD AMIAD FILTERS

Heavily reinforced frame handles pressures to 140 PSI.

Note: Amiad Standard 1" and 1 1/2" use the same size screens.

Part #	Filter Size (MPT)	Mesh	GPM	Filter Area Sq. In.	Price
FAM34	3/4"	155	13	17	\$34.95
FAM34200	3/4"	200	13	17	\$34.95
FAM1	1"	155	30	26	\$84.95
FAM1200	1"	200	30	26	\$84.95
FAM112	1 1/2"	155	66	26	\$109.95
FAM112200	1 1/2"	200	66	26	\$109.95
FAM112SU	1 1/2"	155	66	52	\$149.95
FAM112SU2	1 1/2"	200	66	52	\$149.95



3/4"

1"

1 1/2"

2"

AMIAD TAGLINE FILTERS

Lower-cost alternative can handle pressures to 110 PSI.

Note: 3/4" and 1" Amiad Tagline Filters both use 3/4" Amiad Screens. 1 1/2" Amiad Tagline Filters use 1 1/2" Amiad Super Screens.

Part #	Filter Size (MPT)	Mesh	GPM	Filter Area Sq. In.	Price
FAMCP34	3/4"	155	13	17	\$19.95
FAMCP34200	3/4"	200	13	17	\$19.95
FAMCP1	1"	200	22	17	\$25.95
FAMCP112	1 1/2"	155	66	52	\$98.95
FAMCP112200	1 1/2"	200	66	52	\$98.95
FAMCP2155	2"	155	110	72	\$179.95
FAMCP2200	2"	200	110	72	\$179.95



ARKAL DISC FILTERS

One of the finest disc filters on the market. If you have organic matter such as algae in your water supply (pond, creek, lake, river), this is the answer! The stacked discs in the Arkal filter are more durable and easier to clean than screens or cartridges. Discs must be removed from the filter body for cleaning. Maximum pressure is 140 PSI. Not for sediment.

Part #	Filter Size (MPT)	Mesh	GPM	Filter Area Sq. In.	Price
FA34	¾"	140	12	24.8	\$37.95
FA1	1"	140	26	48.9	\$109.95
FA1200	1"	200	26	48.9	\$109.95
FA112140	1½"	140	35	48.9	\$156.95
FA112200	1½"	200	35	48.9	\$156.95

The ¾" Arkal is not available in 200 Mesh.



ARKAL SUPER DISC FILTERS

Designed for larger drip systems or where the water has more algae or other organic debris. The disc set is almost twice the size of a standard Arkal filter, providing a much larger filtering capacity and a higher flow. Maximum pressure 140 PSI. Not for sediment.

Part #	Filter Size (MPT)	Mesh	GPM	Filter Area Sq. In.	Price
FA1140SUP	1"	140	35	86.5	\$159.95
FA1200SUP	1"	200	35	86.5	\$159.95
FA112140SU	1½"	140	52	86.5	\$199.95
FA112200SU	1½"	200	52	86.5	\$199.95



ARKAL 2" DUAL LITE DISC FILTERS

Substantially larger than any of our other screen or disc filters. The filtering area is almost twice as large as the Arkal 1½" filter. Not for sediment.

- Max Pressure: 116 PSI
- Length: 16 5/16" Width: 10¼"
- Weight: 6.6 lb.
- Distance between inlet and outlet: 10¼"

Part #	Filter Size (MPT)	Mesh	GPM	Filter Area Sq. In.	Price
FADL2140	2"	140	110	147	\$295.95
FADL2200	2"	200	110	147	\$295.95



SPIN CLEAN FILTERS

An essential component of an irrigation system. The unique design effectively keeps debris moving across the screen element toward the basin, where it is collected. Ideal for removing heavy debris like sand. Note: Filter must be placed horizontally into the line. Maximum pressure 150 PSI. Small Spin Clean filter sizes available online at Dripworks.com.

Part #	Filter Size (MPT)	Mesh	GPM	Filter Area Sq. In.	Price
FSC112	1 ½"	150	55	60.8	\$389.95
FSC2	2"	150	120	60.8	\$439.95

When it's time to replace your filter disc, find yours at DRIPWORKS.COM



PRESSURE REGULATORS

A regulator reduces incoming water pressure (PSI) that is too high for drip systems. Regulators (except the Senninger Limit Valve) must be placed downstream of valves or timers to prevent damage from constant pressure.

BEST SELLER!



Senninger Garden Regulators

Our best-selling regulator. It is ideal for low-volume drip systems. Impact-resistant body (3½" long). FHT x MHT for use with Tee filters, Inline filters or Hose Threaded Y filters. Flow range is 0.5–7 GPM.

PRSG10	10 PSI, 90°	\$9.95
PRSG20	20 PSI, 100°	\$9.95
PRSG30	30 PSI, 110°	\$9.95
PRSG40	40 PSI, 120°	\$9.95

HIGH FLOW (10–32 GPM)



Pipe Thread x Pipe Thread

1¼" FPT x 1" FPT

PRSH10	10 PSI, 90°	\$29.95
PRSH30	30 PSI, 110°	\$29.95

MEDIUM FLOW (2–20 GPM)



Pipe Thread x Pipe Thread

¾" FPT x ¾" FPT

PRSMPP12	12 PSI, 90°	\$14.95
PRSMPP20	20 PSI, 100°	\$14.95
PRSMPP30	30 PSI, 110°	\$14.95
PRSMPP40	40 PSI, 120°	\$14.95



Pipe Thread x Hose Thread

¾" FPT x MHT

PRSMPP12	12 PSI, 90°	\$14.95
PRSMPP30	30 PSI, 110°	\$14.95



Pipe Thread x Pipe Thread

1" FPT x 1" FPT

PR1S12	12 PSI, 90°	\$15.95
PR1S25	25 PSI, 105°	\$15.95
PR1S40	40 PSI, 120°	\$15.95

CONSTANT PRESSURE



Senninger Limit Valves

Use these constant pressure regulators before timers, valves, and shutoffs to reduce line pressure and extend the life of the system. Maximum inlet pressure is 125 PSI. Flow range is 0.5–18 GPM. FPT x FPT.

PRLV10	10 PSI, ¾"	\$24.95
PRLV20	20 PSI, ¾"	\$24.95
PRLV30	30 PSI, ¾"	\$24.95
PRLV40	40 PSI, ¾"	\$24.95
PR1LV30	30 PSI, 1"	\$24.95

Note: When system is not operating, a 30 PSI Limit Valve will allow up to 45 PSI in the system.

LOW FLOW (0.5–8 GPM)



Hose Thread x Hose Thread

FHT x MHT for use with Tee filters, Inline filters or Hose threaded Y filters (p. 18).

PRSLHH12	12 PSI, 90°	\$12.95
PRSLHH20	20 PSI, 100°	\$12.95
PRSLHH30	30 PSI, 110°	\$12.95



Pipe Thread x Hose Thread

¾" FPT x MHT for use with pipe threaded Y filters.

PRSLPH12	12 PSI, 90°	\$12.95
----------	-------------	-------	---------



Pipe Thread x Pipe Thread

¾" FPT x ¾" FPT for use with pipe threaded Y filters.

PR12	12 PSI, 90°	\$11.95
PR20	20 PSI, 100°	\$11.95

Click to chat about choosing the right regulator at DRIPWORKS.COM

FPT = Female Pipe Threads, FHT = Female Hose Threads, MPT = Male Pipe Threads, MHT = Male Hose Threads

*Amount of incoming static pressure the regulator can handle.

EXTENSION HOSES, SHUTOFFS, SPLITTERS, AND QUICK CONNECTS

Customize your drip irrigation system with high quality accessories.

**High Pressure Extension Hose**

When a valve assembly is so large that it stresses a hose bib, lower it to the ground with a high-pressure extension hose. Designed for constant pressure. FHT x MHT brass ends. Maximum operating pressure of 150 PSI.

HPEX3▲ 3' Extension Hose.\$18.95
HPEX5▲ 5' Extension Hose.\$23.95

**Hose Saver – Timer Saver**

Protect your timer by installing this 8" high-pressure hose between your faucet and timer. Designed for constant pressure.

HPSAV▲\$13.95

**Hose Shutoff**

This hose thread manual shutoff is very handy to have at the end of a hose.

HSO Plastic.\$1.95
HSOBR▲ Brass with Swivel.\$7.95

**Faucet Angle Adapters with Swivels**

Use these fittings to adapt a faucet that is too low to the ground or to change the angle of a hose bib. All have standard hose ends.

HFAA90▲ PVC 90° Adapter.\$7.35
HFAVBR▲ Brass 45° Adapter with Shutoff\$8.95
HFAA▲ PVC 45° Adapter.\$7.95

**3-Way PVC Splitter**

A ¾" PVC splitter with brass swivel made by DripWorks for use with multiple timers. Use with hose extension above.

HSPL3▲ 3-Way Splitter.\$14.95
HSPL3SO▲ 3-Way Splitter with 3 HSO Shutoffs\$19.95

**Female Hose Plug**

Protect your drip system from dirt and bugs when it is disconnected from the water source.

HPLUG▲\$1.49

**Brass 4-Way Splitter**

A heavy duty brass splitter with built-in valves and hose swivel. Use with hose extension on left.

HSPL4B▲\$29.95

**Hose Y with Valves**

Run two drip systems (with or without timers) from one faucet or leave one outlet available for a garden hose.

HYV Plastic.\$3.29
HYVBR▲ Brass with Swivel.\$12.95
HYVHI▲ Brass Full Port Hose Y with Swivel\$23.95

Gilmour

**High-Flow Hose Fittings**

Heavy-duty, full-port hose fittings allow for a higher flow at a lower price than the brass above. These have easy-to-grip shutoff handles and female swivel inlets.

HSOHPL Hose Shutoff (Plastic)\$6.95
HSOAL▲ Hose Shutoff (Aluminum)\$10.95
HYVHPL Hose Y (Plastic)\$8.95
HYVAL▲ Hose Y (Aluminum) ...\$13.95

**Flush Valves**

The flush valve opens when pressure drops below 2.5 PSI to drain standing water in the supply lines and prevent prolonged dripping on your plants and seedlings.

VFH Female Hose Thread.\$1.29
VFP ¾" Female Pipe Thread ...\$1.29

EASY CONVERSION: SPRINKLER TO DRIP SYSTEM FITTING

This fitting has a ½" FPT inlet to convert lawn sprinkler risers to a drip system.

**½" FPT x Male Hose Elbow (with Shutoff)**

To start a drip system; attach a hose threaded filter (p. 18), then a female hose start (ELFH, p. 11).

RLSO▲\$3.79

FIND THE RIGHT ASSEMBLY FOR THE JOB

When attaching fittings to your faucet to start your drip system, the order of assembly is important. Adapters may be used to connect pipe threaded components to hose threads. Use a high pressure hose extension when connecting the assembly to the faucet. Timers should not rest directly on the ground.



Seeing is understanding: browse our assembly diagrams at DRIPWORKS.COM

MAKE THE RIGHT CONNECTION WITH HOSE TO PIPE ADAPTERS

Not all components in a system have the same type and size of threads. Use these fittings to connect unlike threads. Add thread sealant tape on pipe-threaded connections to prevent leaks. Note: Hose threads are always uniform in size.



Female Hose x 3/4" Female Pipe

AFHFP▲ Dura PVC Swivel.....\$3.45
AFHFPBS▲ Brass Swivel.....\$4.95



Male Hose x 3/4" Male Pipe

AMHMP▲ Polypropylene.....\$0.59
AMHMPB▲ Solid Brass.....\$4.49



Female Hose x 3/4" Male Pipe

AFHMP▲ Dura PVC Swivel.....\$3.45
AFHMPB▲ Solid Brass.....\$4.49



Female Hose x Female Hose

AFHFH▲ Dura PVC Swivel.....\$3.95
AFHFHBS▲ Brass Swivel.....\$4.95



Male Hose x Male Hose

AMHMH▲ Plastic.....\$1.29
AMHMB▲ Solid Brass.....\$4.49



Male Hose x 3/4" Female Pipe

AFPMH▲ PVC.....\$1.79
AFPMHB▲ Solid Brass.....\$3.95



PVC Glue-In x Hose End

We carry both female and male hose ends for PVC pipe. AFHI and AMHI fittings will glue onto 1/2" PVC pipe or into 3/4" PVC slip fittings (see pp. 46-47).

AFHI Female Hose Swivel...\$1.79
AMHI Male Hose.....\$1.29
AMHI12* 1/2" x Male Hose.....\$0.99

*Glues into 1/2" PVC fitting.

STURDY BARB FITTINGS

Strong hold for higher pressure systems.



Female Hose Start (Swivel)		
Part #	Size	Price
BFHDURA▲	½"	\$4.35
BFH34DURA▲	¾"	\$4.95
BFH1▲	1"	\$4.95



Male Hose		
Part #	Size	Price
BMH▲	½"	\$2.85
BMH34▲	¾"	\$2.95
BMH1▲	1"	\$3.25



Coupler		
Part #	Size	Price
BCDURA▲	½"	\$1.25
BC34DURA▲	¾"	\$1.45
BC1▲	1"	\$1.45



Reducing Coupler		
Part #	Size	Price
BRC3412▲	¾" x ½"	\$1.65
BRC112▲	1" x ½"	\$2.75
BRC134▲	1" x ¾"	\$2.75

Hose threads are always the same size. These fittings are made of schedule 40 PVC plastic and may vary in color.



Tee		
Part #	Size	Price
BDTURA▲	½"	\$2.65
BT34DURA▲	¾"	\$4.85
BT1▲	1"	\$4.85



Reducing Tee		
Part #	Size	Price
BRT3412▲	¾" x ½"	\$3.25
BRT134▲	1" x ¾"	\$3.75
BRT112▲	1" x ½"	\$3.75
BRT11212▲	1½" x ½"	\$8.45
BRT1121▲	1½" x 1"	\$8.45



Elbows		
Part #	Size	Price
BLDURA▲	½"	\$2.45
BL34DURA▲	¾"	\$2.95
BL1▲	1"	\$3.25



Plug		
Part #	Size	Price
BP▲	½"	\$1.85
BP34▲	¾"	\$1.95
BP1▲	1"	\$2.95



Female Pipe		
Part #	Size	Price
BFP12▲	½"	\$4.45
BFP34▲	¾"	\$4.95
BFP1▲	1"	\$5.45



Male Pipe		
Part #	Size	Price
BMP12▲	½"	\$1.05
BMP34▲	¾"	\$1.25
BMP1▲	1"	\$1.29



Barbed Valves*			
Part #	Size	Tubin ID	Price
BVA▲	½"	.600"	\$2.59
BVA34▲	¾"	.820"	\$3.95
BVA1▲	1"	--	\$5.79

*These Valves are not PVC.

Don't see what you need?
Head to DRIPWORKS.COM

Stainless Steel Crimping Clamps

These gap-free clamps are an inexpensive solution for commercial and industrial applications. They are easy to install, secure to 100 PSI, and will not loosen up over time. Crimping clamps must be cut off for removal. They are not reusable.

BOSS12	Clamp for ½" Drip Tubing ...	\$2.80/10
		\$20.00/100
BOSS34	Clamp for ¾" Drip Tubing ...	\$3.20/10
		\$25.00/100
BOSS1	Clamp for 1" Oval Hose	\$3.50/10
		\$28.00/100
BOTOOOL	Crimping Tool	\$34.95



Stainless Steel Tubing Clamps

American, high quality stainless steel clamps with stainless bands and gears. Stronger and longer-lasting than standard imports with just stainless bands. Use on barbed fittings when pressure is more than 20 PSI.

BSHC12	½" Clamp Size #8	\$20.95/10
BSHC	½" or ¾" Clamp Size #12.	\$22.90/10
BSHC1	1" Clamp Size #16.	\$22.95/10



Note: Will not fit on thicker-walled, high-density poly pipe (HDPE). Install with the Crimping Tool (BOTOOOL).

EFFECTIVE DRIP EMITTERS

Low pressure? Uneven plant spacing? Dirty water? Check out these low-cost, non-pressure compensating emitters. We recommend using a 20 PSI pressure regulator or lower (p. 21) with these emitters.

GROWERS CHOICE



*Great for
Compost Tea!*

NON-PLUGGING EMITTER

If your water supply is very dirty (pond or irrigation ditch) and fine screen filters clog quickly, this is the answer. First use a coarse, 30–50 mesh screen filter to capture large particles. Then use these Non-Plugging Emitters, which pass particles that would plug up most other emitters. A minimum of 15 PSI is required for these emitters to work properly. Not an inline emitter. Use at the end of ¼" tubing or install directly into mainline. Flow at 20 PSI.

DNP1 1 GPH \$9.95/10 ... \$89.95/100



POT DRIPPER

This is a basic container dripper with a 2" hold down stake and a threaded inlet. Note: A ¼" Transfer Barb (14TB, p. 15) and ¼" tubing are needed to connect this emitter to the mainline. Pot Drippers may also be used with 1/8" tubing and fittings (pp. 15,16). Flow at 15 PSI.

DPOT12 ½ GPH (red) \$3.95/10 ... \$31.95/100
DPOT1 1 GPH (black) \$3.95/10 ... \$31.95/100

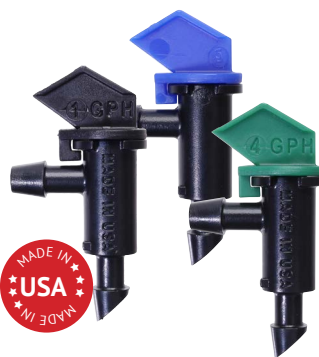


INLINE EMITTER

Use with ¼" tubing to make your own inline emitter tubing. Can also be added into existing ¼" lines at any time. Perfect for unevenly spaced plants. For larger plants, just add more emitters. To use, cut tubing where you want an emitter and insert the barbed ends. Use a goof plug (p. 15) to end the line. Flow at 15 PSI.

DTMIL12-10 ½ GPH (red) \$2.95/10
DTMIL12-50 ½ GPH (red) \$11.95/50
DTMIL1-10 1 GPH (black) \$2.95/10
DTMIL1-50 1 GPH (black) \$11.95/50
DTMIL2-10 2 GPH (green) \$2.95/10
DTMIL2-50 2 GPH (green) \$11.95/50

Note: ¼" tubing has a maximum flow of about 30 GPH. Do not put too many emitters on any ¼" line.



TAKE-APART EMITTER

Take-Apart Emitters have a locking cap that can be removed for cleaning. The beveled barb end is the inlet and the flag end is the outlet. These emitters are great for low-pressure systems. Works down to 4 PSI. Flow at 15 PSI.

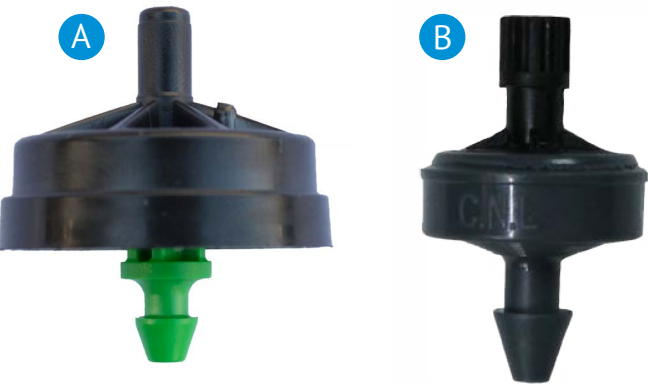
DTA1-10 1 GPH (black) \$2.49/10
DTA1-50 1 GPH (black) \$10.95/50
DTA1-100 1 GPH (black) \$19.95/100
DTA2-10 2 GPH (blue) \$2.49/10
DTA2-50 2 GPH (blue) \$10.95/50
DTA2-100 2 GPH (blue) \$19.95/100
DTA4-10 4 GPH (green) \$2.49/10
DTA4-50 4 GPH (green) \$10.95/50
DTA4-100 4 GPH (green) \$19.95/100

Note: The flag end is the outlet.

PRECISE WATERING



THE PRODUCT OF CHOICE IN THE RUGGED VINEYARDS OF NORTHERN CALIFORNIA



TRELLIS HANGERS

UV-resistant plastic hangers used to suspend ½" or ¾" tubing on trellis wire. Used in vineyards, orchards, and greenhouses.

STRE	½"	\$1.20/10	\$11.00/100
STRE34	¾"	\$3.90/10	\$32.00/100



BEST SELLER!

A. Woodpecker PC

The heavy-duty PC emitter! The rubber diaphragm is the largest available and the least likely to plug. ¼" inlet and outlet. Pressure range of 15–50 PSI.

DNPC12-25	½ GPH (red)	\$15.95/25
DNPC12-100	½ GPH (red)	\$54.95/100
DNPC1-25	1 GPH (black)	\$15.95/25
DNPC1-100	1 GPH (black)	\$54.95/100
DNPC2-25	2 GPH (green)	\$15.95/25
DNPC2-100	2 GPH (green)	\$54.95/100
DNPC6-25	6 GPH (orange)	\$15.95/25
DNPC6-100	6 GPH (orange)	\$54.95/100
DNPBUG	Bug Cap.	\$2.89/10
	(allows flow)	\$25.95/100
DNPCAP	Shutoff Cap.	\$3.95/10
		\$32.95/100

B. Woodpecker Jr. PC

A versatile emitter for landscapes, greenhouses, orchards, and backyard gardens. One unique feature is that it won't begin to emit water until the entire system reaches 7 pounds of pressure (PSI). This is great for greenhouses where even watering is necessary or hillside plantings at different elevations. ¼" inlet and outlet. Pressure range of 10–50 PSI.

DNJR12-25	½ GPH (red)	\$11.95/25
DNJR12-100	½ GPH (red)	\$42.95/100
DNJR1-25	1 GPH (gray)	\$11.95/25
DNJR1-100	1 GPH (gray)	\$42.95/100
DNJR2-25	2 GPH (green)	\$11.95/25
DNJR2-100	2 GPH (green)	\$42.95/100

Pressure compensating emitters are ideal for achieving even water distribution when your drip irrigation system runs extensive distances such as planting in long rows or when you're dealing with uneven or hilly terrain.



COBRA STAKE DRIP EMITTERS

A landscape spike dripper that delivers precise amounts of water directly to the root zone. Requires a length of ¼" tubing and a transfer barb (p. 15) to connect emitter to mainline tubing. Used in nurseries, root stock, and landscape applications. Self flushing, use as a PC pot dripper. Stake length of 5 inches. Pressure range of 15-45 PSI.

DCOB12-5	½ GPH (red)	\$3.49/5
DCOB12-100	½ GPH (red)	\$49.95/100
DCOB1-5	1 GPH (black)	\$3.49/5
DCOB1-100	1 GPH (black)	\$49.95/100
DCOB2-5	2 GPH (green)	\$3.49/5
DCOB2-100	2 GPH (green)	\$49.95/100

DCIL



CETA PC EMITTERS ON A STAKE

Available for either inline or end of line installation. Take apart for easy cleaning. Pressure range of 10-50 PSI.

DCSTK-10	1 GPH End of Line . . .	\$8.95/10
DCSTK -100	1 GPH End of Line . . .	\$75.95/100
DCIL-10	1 GPH Inline	\$8.95/10
DCIL-100	1 GPH Inline	\$75.95/100



PINCH DRIP EMITTERS

This self flushing emitter lies almost flat on the mainline tubing so it is not easily damaged. Designed for easy finger/thumb installation. ¼" barbed inlet and ¼" nipple outlet. Pressure range of 15-45 PSI.

DPCH12-10	½ GPH (red)	\$3.79/10
DPCH12-100	½ GPH (red)	\$29.95/100
DPCH1-10	1 GPH (black)	\$3.79/10
DPCH1-100	1 GPH (black)	\$29.95/100
DPCH2-10	2 GPH (green)	\$3.79/10
DPCH2-100	2 GPH (green)	\$29.95/100



CETA PC EMITTERS

These self flushing PC emitters have a ¼" barb on both inlet and outlet. Take apart for easy cleaning. Pressure range of 15-45 PSI.

DC12PC-10	½ GPH (red)	\$3.95/10
DC12PC-100	½ GPH (red)	\$32.95/100
DC1PC-10	1 GPH (black)	\$3.95/10
DC1PC-100	1 GPH (black)	\$32.95/100
DC2PC-10	2 GPH (green)	\$3.95/10
DC2PC-100	2 GPH (green)	\$32.95/100

What's the best emitter for your needs?
Find out at DRIPWORKS.COM

JOIN OUR COMMUNITY

You're invited to follow us on Facebook, YouTube, Instagram, and Pinterest. In addition to enjoying exclusive offers, it's a great way to share how you used DripWorks products to complete your farm or garden project and to check out what other community members are doing. We are only satisfied when you are successful.

@DripWorksUSA    



LET'S GET YOU WHAT YOU NEED.

We've got easy ways to order, quick ways to ship, and no-hassle returns.

FOUR EASY WAYS TO ORDER

1. **ONLINE** at Dripworks.com
2. **CALL** us toll free at 844.849.9573

March–June 30	July–Feb 28
Mon.–Fri. 7 am–5 pm PST	Mon.–Fri. 8 am–4 pm PST
Closed Sat. and Sun.	Closed Sat. and Sun.
3. **FAX** 707.459.9645
4. **VISIT** our retail store and demo garden
190 Sanhedrin Circle, Willits, CA 95490
Store hours Mon.–Fri. 9 am–4 pm PST

SHIPPING & DELIVERY

We typically ship orders within 24 hours. We will notify you if an item is back-ordered.

Shipping Options:

1. Ground Delivery Service

In order to provide the fastest delivery to your location, we now ship our products from three separate locations. Please do not be alarmed if all your items do not arrive in the same delivery. Shipping transit times will vary.

2. Next Day Delivery

Call By 1 pm Pacific Time. We offer Next Day, 2nd Day, and 3-Day Select. Call for rates. Expedited rates will be calculated for online orders.

3. U.S. Priority Mail

Standard method for small shipments under 3 pounds is Priority Mail at \$9.00 flat rate. Small orders of 0.4 pounds or less are shipped via First Class. AK, HI, PR, VI, and Canada orders shipped via USPS. There is a \$10.00 handling fee for orders to Canada.

RETURNS

DripWorks 30-Day Money Back Guarantee

Not happy with your item for any reason? Items may be returned or exchanged as follows (reimbursement does not include original shipping and handling charges):

Returns within 30 days: All items must be in their original packaging. Return shipping is the responsibility of the purchaser. Please inspect your entire order within 48 hours upon delivery and call us with any questions at 844.849.9573.

Returns from 31-60 days: New, unused, unopened items in their original packaging will be charged a 20% restocking fee.

Returns from 61-90 days: New, unused, unopened items in their original packaging will be charged a 30% restocking fee.

Returns after 90 days: Unfortunately, we cannot refund or exchange items after 90 days.

For information on our return policies regarding Special or Custom orders, kits, drop-shipped items, defective items, or undeliverable/unclaimed packages, please visit:
Dripworks.com/returns for details.

For instructions on returning or exchanging your item(s), please visit:
Dripworks.com/returns.

Prices are subject to change.

General Email: support@Dripworks.com
Returns: returns@Dripworks.com

CATALOGO DISPONIBLE EN ESPAÑOL EN DRIPWORKS.COM >>



SUET FOR BIRDS

Suet is one of the most popular and beneficial foods you can offer to birds throughout the year, efficiently providing needed nutrients and calories.



BIRD SUET

Available with Monthly Subscription

These suet cakes attract colorful songbirds like Cardinals, Chickadees, Goldfinches, Juncos, Kinglets, Nuthatches, Purple Finches, Siskins, Tanagers, Thrushes, Titmice, Warblers, Woodpeckers and Wrens. Sign up for a monthly subscription and receive a free cage (NSCAGE).

- Made in Coopersville, Michigan, USA
- Great treat during migration and winter months
- No melt, all-season suet cake
- No touch, easy-open, packaging
- Guaranteed fresh
- Store in a cool, dry place
- Not for human consumption

Orange Burst flavor is A mix of sunflower seeds, corn, other seeds, and orange flavoring.

Berry Blast flavor is a mix of sunflower seeds, corn, other seeds, and berry flavoring.

Peanut Crunch flavor is a mix of corn, sunflower seeds, other mixed seeds, and peanut pieces.

Bird's Blend High Energy flavor is a mix of corn, sunflower seeds, and mixed seeds.

NHS-ORANGE	Orange Burst
NHS-BERRY	Berry Blast
NHS-PEANUT	Peanut Crunch
NHS-BLEND	Bird's Blend High Energy
Monthly Subscription \$7.95

Suet Cake
Monthly
Subscription



BIRD SUET CAGES



Suet Feeder

Easy for birds to feed from all sides. Vinyl-coated metal cage is weather-resistant. Designed to feed a variety of songbirds. Front panel opens for easy filling. Hanging chain attached.

Size: 5.25" L x 1.6" W

NSCAGE.....\$4.95



Vine and Leaf Cage

Great for a variety of songbirds. Plenty of room to cling and eat. Coated steel construction with hanging hook included. Latches securely at the bottom.

Size: 5.75" L x 1.75" W

NHSC-TUS.....\$8.95



Luminescence Cage

The glow in the dark detail makes this cage great for your garden. Front panel opens for quick and easily refilling. Attached hanging chain.

Size: 5.25" L x 2.25" W

NHSC-LUM.....\$14.25



Copper Leaf Cage

Leak-proof design with attached hanging chain. Front panel opens for quick and easy refilling.

Size: 5.25" L x 2.25" W

NHSC-LEAF.....\$18.95

HIGH VOLUME WATERING

When a larger amount of water is necessary for fast-growing, thirsty plants, or a big flower garden or ground cover, these sprayers will emit a higher amount of water than drippers.



Explore our video library to see these products in action at DRIPWORKS.COM



PRESSURE COMPENSATING SHRUBBLERS

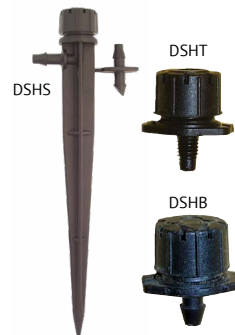
Gentle flow action with uniform coverage for all emitters on the same supply line. Considered partially pressure compensating, as there is some variation due to pressure. See chart below.

- Pre-set flow rate
- Take apart for easy cleaning
- Colored cap for identification
- Pressure range 15–45 PSI

DSHPCB-5	Barbed Base	\$3.29/5
DSHPCB-100	Barbed Base	\$49.95/100
DSHPCS-5	5" Stake	\$5.49/5
DSHPCS-100	5" Stake	\$98.95/100

Flow Chart

Pressure	Maximum Flow	Diameter
15 PSI	6.6 GPH	7"
20 PSI	7.5 GPH	8"
30 PSI	8.1 GPH	12"
40 PSI	9.3 GPH	14"



SHRUBBLERS®

Emit eight fingers of water that can be easily adjusted from a basic drip to a 24" diameter circle. Ideal for pots, tubs, landscaped gardens, nurseries, hanging baskets, planter boxes and more.

- Fully adjustable from 0-13 gallons per hour (GPH)
- Turn cap to adjust flow or shut off completely
- Rated up to 30 PSI

DSHS-5	Full Circle on 5" Stake with break-off transfer barb.	\$3.79/5
DSHS-100	Full Circle on 5" Stake with break-off transfer barb.	\$64.95/100
DSHS180-5	Half Circle on 5" Stake with break-off transfer barb.	\$3.79/5
DSHS180-100	Half Circle on 5" Stake with break-off transfer barb.	\$64.95/100
DSHT-5	Full Circle on 10-32 Threaded Base.	\$2.95/5
DSHT-100	Full Circle on 10-32 Threaded Base.	\$44.95/100
DSHB-5	Full Circle on 1/4" Barb Base.	\$2.95/5
DSHB-100	Full Circle on 1/4" Barb Base.	\$42.95/100

Flow Chart

Gallons Per Hour (GPH)	Diameter
5.8	6"
8.7	12"
13	24"



MICRO-JETS

Easy-to-adjust valves with your choice of spray patterns make Micro-Jets a smart choice for watering perennials, ground covers, small trees, and shrubs. For quick installation, use EZ Stakes (p. 17).

- Maximum flow of 22 gallons per hour (GPH) at 30 PSI
- Radius of 7'-8' at 30 PSI for all Micro-Jets
- 10-32 threaded base
- Jets can be shut off individually
- Quarter and half circle patterns deliver a fan spray; full circle delivers fingers of water (see photos at left)
- Pressure range 15-45 PSI



Part #	Color	Pattern	Quantity	Price
MAJ90-5	Black	Quarter Circle	5	\$4.95
MAJ90-50	Black		50	\$39.95
MAJ180-5	Blue	Half Circle	5	\$4.95
MAJ180-50	Blue		50	\$39.95
MAJ360-5	Red	Full Circle	5	\$4.95
MAJ360-50	Red		50	\$39.95

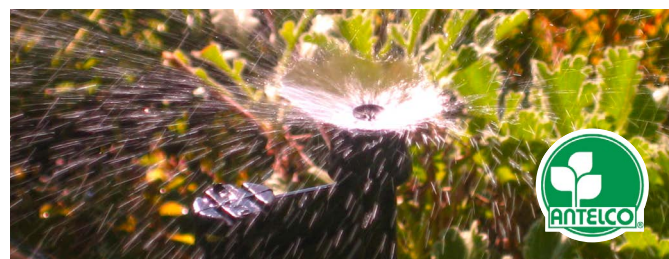


POTSTREAM™ ADJUSTABLE FLOW

The PotStream is a side-mounted adjustable sprayer. It features a gentle stream pattern that minimizes soil erosion, and the adjustable spray allows for watering of different-sized containers and pots.

- Pressure range: 5-40 PSI
- Low application rate and gentle stream pattern
- Can be taken apart for easy cleaning

DPS-5	\$5.95/5
DPS-25	\$24.95/25
DPS-100	\$89.95/100



SPECTRUM™

Spectrum sprayers have a full-circle spray pattern that can be easily adjusted for areas that vary in size or watering need. Great for trees, shrubs, and small turf areas.

- Easy to clean
- Fully adjustable up to 12' diameter
- Can be completely turned off
- Excellent way to establish plants with changing water needs

MSPB-5	1/4" Barbed Base	\$3.49/5
MSPB-100	1/4" Barbed Base	\$54.95/100
MSPS-5*	5" Stake	\$4.79/5
MSPS-100*	5" Stake	\$79.95/100
MSPT-5	10-32 Threaded Base	\$3.49/5
MSPT-100	10-32 Threaded Base	\$54.95/100

*Break-off Transfer Barb (14TB) is for use with 1/4" tubing.

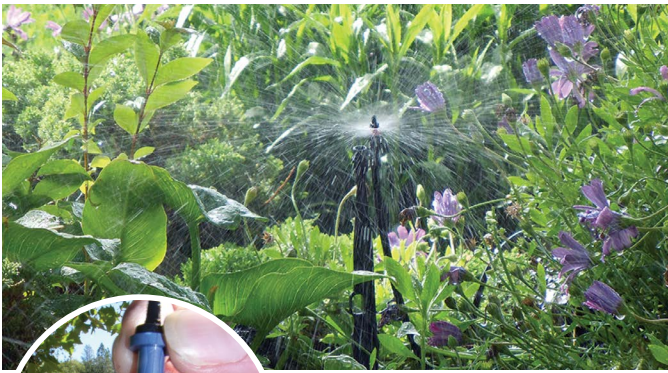
Flow Chart

Pressure	Maximum Flow	Radius
5 PSI	0-3.3 GPH	8.7"
10 PSI	0-4.7 GPH	9.1"
20 PSI	0-6.8 GPH	9.5"
30 PSI	0-8.3 GPH	11.0"
40 PSI	0-9.7 GPH	12.4"

Flow Chart

Pressure	Maximum Flow	Diameter
15 PSI	17 GPH	9'
20 PSI	20 GPH	11'
30 PSI	24 GPH	12'

MINI-SPRINKLERS



EIN DOR MINI-SPRINKLERS

These mini-sprinklers are great for landscaped areas, garden beds, propagation, and smaller container groupings. A flat spray angle reduces wind drift. Full circle spray pattern with even distribution of droplets.

The sprinkler heads have a press-fit base, which must be used with either a Support Assembly, Press-Fit Barb, or Press-Fit Adapter (see MESK, MEBARB below). Use either the Plug (MEPLUG) or Press-Fit Valve (MEVSO) to shut off individual sprinkler heads.

All Mini-Sprinklers \$3.95/5 \$59.95/100

Part #	Color	Flow*	Diameter
MELOW	Purple	5 GPH	5'
MELTB	Blue	10 GPH	7'
MEBLA	Black	18 GPH	9'
MERED	Red	32 GPH	13'

*Measured at 30 PSI. Diameter is approximately 10% smaller at 25 PSI. 20% diameter loss when inverted.

WING SPRINKLERS

A low-cost alternative for large areas. Great for xeriscapes where low water usage is desirable. Best at low pressures (15–30 PSI). Full circle only with even distribution of droplets.

Press-fit sprinklers must be used with either the Press-Fit Support Assembly, Press-Fit Barb, or Press-Fit Adapter (MESK, MEBARB) for use in mainline or ¼" tubing. Optional shutoff valve (see MEVSO). Operates in upright position only.

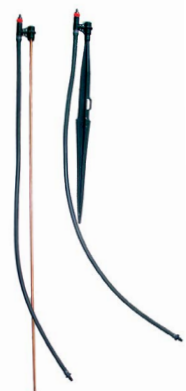
All Wing Sprinklers. \$5.95/5 \$99.00/100

Part #	Color	Flow @ 30 PSI	Diameter @ 30 PSI
MSWGR	Olive Green	5 GPH	8'
MSWLB	Light Blue	9 GPH	15'
MSWBL	Black	18 GPH	19'
MSWBRN	Brown	34 GPH	22'



PRESS-FIT ACCESSORIES

Press-Fit accessories are super easy to install and hold up to 40 PSI.



Press-Fit Support Assembly

A complete stake assembly that includes a plastic stake or metal rod, bridge, ¼" flexible vinyl tubing and a transfer barb. For Ein Dor Mini-Sprinklers and Wing Sprinklers only.

MESK18 18" Metal Rod with 2' Tubing \$2.39
MESK36 36" Metal Rod with 3' Tubing \$17.95/5*

*Due to shipping issues, 5 is the minimum quantity.



Press-Fit Barb

Use with Mini-Sprinklers and Wing Sprinklers. The barb end fits ¼" (.250" OD) tubing.

MEBARB-5 \$1.69/5
MEBARB-100 \$14.95/100



Press-Fit Valve *Easier than a plug!*

Install between the bridge and sprinkler head as an individual shutoff.

MEVSO \$3.10/5



Plug

To shut off a Mini-Sprinkler, remove the sprinkler head and insert this special press-fit plug.

MEPLUG \$1.95/5



THE SPRAYER FOR HIGHER VOLUME

GROWERS CHOICE BEST SELLER!



DOWN-SPRAY SPRINKLERS (FULL CIRCLE)

Down-Spray sprinkler assemblies include a 12" galvanized wire stake and 36" of supply tubing with barb. The C-Frame Down-Spray is a 360° spray jet with a 45° downward trajectory that targets the root zone, to reduce runoff and eliminate over-spray.

- 20" diameter, full-circle spray pattern
- Wets evenly with minimal surface disturbance
- Use on large plants or containers
- UV stabilized for long life
- Shutoff clip to stop flow (sprinkler assembly only)

Color	GPH @ 10 PSI	GPH @ 20 PSI
Black	4.8	7.2
Blue	7.0	10.5

Complete Sprinkler Support Assembly with Tubing & Stake

MADASBLK-5	Black . . .	\$8.95/5
MADASBLK-25	Black . . .	\$39.95/25
MADASBLU-5	Blue . . .	\$8.95/5
MADASBLU-25	Blue . . .	\$39.95/25

Without Sprinkler Support Assembly (Head Only)

MADBLK-5	Black . . .	\$1.89/5
MADBLK-100	Black . . .	\$29.95/100
MADBLU-5	Blue . . .	\$1.89/5
MADBLU-100	Blue . . .	\$29.95/100



MINI-JETS

These very popular and economical sprayers work well at pressures as low as 5 PSI. They have a flat spray angle to minimize water on foliage, and various spray patterns and flows to provide versatility. At pressures above 30 PSI, the spray turns into more of a mist. All Mini-Jets have a 10-32 threaded base and will fit into 1/4" tubing, or Rigid Risers. Use the hex end of the Orange Handle Punch (p. 16) for easy installation.

All Mini-Jets. \$2.19/10 \$18.00/100



Possibly the only spray head you will ever need!

Part #	Color	Spray Pattern	@ 15 PSI GPH Radius/Ft		@ 30 PSI GPH Radius/Ft	
MSBL90	Black	Quarter	4.8	4	6.8	6
MSBL180	Black	Half	4.8	3	6.8	4½
MSBL300	Black	Full	4.8	4	6.8	5
MSBLSTR	Black	Strip	4.8	4	6	4½
MSBU90	Blue	Quarter	5	4½	12.9	6
MSBU180	Blue	Half	8.8	3½	12.9	5
MSBU300	Blue	Full	8.8	4½	12.9	5½
MSBUSTR	Blue	Strip	8.9	5½	10.4	6
MSGR90	Green	Quarter	13.8	4½	19.5	6½
MSGR180	Green	Half	13.8	4	19.5	5½
MSGR300	Green	Full	13.8	5	19.5	6
MSGRSTR	Green	Strip	15.3	7	18.3	7
MSRD90	Red	Quarter	20.0	5	28.9	6½
MSRD180	Red	Half	20.0	4½	28.9	6
MSRD300	Red	Full	20.0	5	28.9	4½
MSRDSTR	Red	Strip	21.6	7½	26.5	10

PRESSURE COMPENSATING SPRINKLERS



WITH DEFLECTOR



WITHOUT DEFLECTOR

Note: For part numbers in below chart, stock spinners are pre-installed and do not include tubing. The blue spinner (MSNSBLD) must be ordered separately and changed out.

Part #	Base Color	Flow	Spinner	Wetted Radius
MSNP(T)	Purple	5.3 GPH	Purple (stock)	8'
			Blue with deflector	2'
			Blue without deflector	4'
MSNBLU(T)	Blue	10.9 GPH	Purple (stock)	8.5'
			Blue with deflector	3'
			Blue without deflector	5.5'
MSNBLA(T)	Black	18.9 GPH	Black (stock)	10'
			Blue with deflector	3'
			Blue without deflector	8'



SUPERNET PRESSURE COMPENSATING SPRINKLERS

Water more trees on the same zone with equal water distribution regardless of row length or elevation changes. Spray pattern may be enlarged as trees grow by simply changing the spinner. Heavy-duty construction for long life. Mounts on support stake (see below).

- Excellent for long rows and uneven terrain
- Ideal for orchards and new tree plantings
- Easy assembly
- Clog resistant and self-flushing
- Pressure range 25–50 PSI
- Replace purple spinner with MSNSBLD to water younger trees. Break off deflector as tree grows.



MSNBLU



MSNSBLD

MSNSTK

SuperNet Assemblies

We recommend purchasing SuperNet sprinklers with the tubing and barb pre-installed. See flow and radius descriptions below.

MSNP	Purple Base (Stock) ..	\$4.69
MSNBLUT	Blue Base.	\$4.69
MSNBLAT	Black Base.	\$4.69

Sprinkler Only

MSNP	Purple Base (Stock) ..	\$3.49
MSNBLU	Blue Base.	\$3.49
MSNBLA	Black Base.	\$3.49

SuperNet Accessories

The SuperNet sprinkler can be mounted on the MSNSTK stake.

MSNSBLD	Blue Spinner with Deflector.	\$0.34
MSNSTK	13" Blue Support Stake.	\$0.99



TREE WATERING STAKES

We recommend these stakes for saturating the soil at a deep level. This encourages trees to send their roots further down, improving survival rates in drought and high winds. Promoting a deep root system also reduces surface cracking and buckling near pathways, sidewalks, patios, or driveways.

- Conserves water, prevents runoff and erosion
- Aerates the soil, promotes deeper rooting
- You can easily add fertilizer into the shaft
- Internal filter to keep roots and rocks out
- Easy to drive the stake into the soil
- UV protected slotted cap for drip tubing
- 14" stake is used for small trees, shrubs, rose bushes

ASTK14	14"	\$9.95
ASTK24	24"	\$11.95

BEAUTIFY YOUR YARD

LED Landscape lighting can dramatically enhance the enjoyment and appearance of your home and yard.

Orbit LED landscape lights are made of durable cast aluminum with integrated, top-of-the-line Cree LED lights and thick, quality glass. The expected life of each LED is approximately 40,000 hours. Using only 3 watts of power, these lights are extremely energy efficient, saving you energy and money over the lifetime of the fixture.

- 120 Lumens (Path lights), 210 Lumens (Spot lights)
- Provides a soft, warm light with a color temperature of 2600k-3200k
- Uses less energy than incandescent lights
- Wire connectors included

PATH LIGHTS

The welcoming, warm light generated by LED Landscape Path Lights adds ambiance, security, and value to any landscape. Path lights can be used to illuminate walkways and provide visual clues to direct people along safe paths.



Black Path Light

Stands nearly two feet tall.
NHRL-BKP1
\$89.95



Bronze Path Light

Stands nearly two feet tall.
NHRL-BRP1
\$89.95



Bronze Path Light

The three-tier path light is a timeless design stands over a foot tall.
NHRL-BRP2
\$89.95

SPOTLIGHTS

Spotlights are great for emphasizing the architectural beauty of your home and landscape. Highlight trees, fountains, and other landscape features throughout your yard.



Black Spotlight
Approximately 5" tall.
NHRL-BKS1
\$89.95



Bronze Spotlight
Approximately 5" tall.
NHRL-BRS1
\$89.95



ORBIT LANDSCAPE 60W CONTROLLER

- 3 Zone Controller with Built-In -60-Watt Power Supply
 - Ideal for LED Landscape Lights
 - 3 Independent, Fully Programmable Zones
 - Indoor/Outdoor Mount
 - 6 Independent start times
- NHRL-100-60W. \$179.95

MOTION SENSOR FOR LANDSCAPE LIGHTING

Orbit's Landscape Lighting Motion Sensor adds security to your home and increases the flexibility of your outdoor landscape lighting system. Connecting directly to Orbit's 3-Zone Landscape LED Light Controller, the motion sensor can independently activate one or more lighting zones allowing lights to turn on for guests approaching the home without activating the lights of another zone. In conjunction with the controller, the motion sensor saves energy with the ability to program how long the lights are activated. Lights no longer need to stay on all night to provide security and safety for your yard and home. The high-quality passive infrared sensor works both day and night, no matter the weather conditions. It senses both heat and movement up to 40 feet away. The sensor features a 120° motion detection angle that offers superior protection and security. The sensor can also be adjusted to the perfect angle with the pivoting mount.

- Automatic, motion-activated light control
 - Save energy and money
 - For use with low voltage landscape lighting - maximum 12 volts
 - Mount on wall or on stake
 - Stake and 10 power cords included
- NHRL-100-MS. \$61.95



EASY COMPOSTING

Composted material makes rich fertilizer, and today's composters make the process easy, odorless, and environmentally sound.



JORA COMPOST TUMBLER

The Jora Compost Tumbler is the easiest to use and most efficient waste composter ever made. Compost kitchen and garden waste fast. Toss in your fruit, vegetable, and grain scraps and in no time you'll have rich, black organic compost for your garden or houseplants.

Call for shipping quote.

AJCOMP33	33 gallon	\$429.00
AJCOMP70	70 gallon	\$549.00
AJCOMP106	106 gallon	\$949.00

Explore our video library to see the composter in action at DRIPWORKS.COM

HARD WATER CONDITIONING



Looking to solve hard water problems in your drip system, house, or business? Commercial growers and backyard gardeners have seen their hard water issues get resolved with these easy to install products.



RAINBOLT

The Rainbolt™ inline unit transforms your water quality to a healthier, more productive, and energized state. It will bust salts, improve soil infiltration, and improve moisture retention. It reduces mineral scale buildup and will help eliminate the need for chemicals to keep pipes, pumps, and emitters clean. For residential use, The Rainbolt ¾" or 1" is designed to soften water for an entire house and typically one unit is sufficient.

- Improved crop yield, healthier soils, and plant vitality
- Chemical free, energy free, and maintenance free
- Pressure Range: 0-110 PSI
- ¾" Flow rate up to 3300 GPH
- 1" Flow rate up to 5400 GPH

MAGRIN34	¾" FPT	\$479.95
MAGRIN1	1" FPT	\$561.95



MAGNETIC WATER CONDITIONING

Magnetic water conditioning sets can help soften hard water without chemicals. As water passes through the magnetic field, lime, and calcium are suspended so they can be flushed out of the system instead of building up in drip emitters, pipes, appliances, toilets, and tubs. The units are sized for maximum pipe flow. Magnets may be doubled up for higher flows. Works on PVC, copper, and poly pipe. Do not install on iron pipe or underground.

- Helps eliminate and prevent scale buildup
- Reduces costly maintenance
- Requires no power, salt, or chemicals

MAG1	Drip System, ½"-1" Pipe @12 GPM	\$79.95
MAG2	Whole House, ½"-1" Pipe @12 GPM	\$149.95
MAG3	Ag/Industrial, 1" Pipe @25 GPM.	\$219.95



EZ-FLO FERTILIZER INJECTORS

Recommended for backyard gardeners, commercial landscapers, and small farms. Just fill the tank (with premixed dry fertilizer or a concentrated liquid fertilizer — not oil based), set the adjustment valve, and the fertilizer solution will automatically flow when the system runs.

- Low minimum flow (120 GPH) with standard bib adapter (IEZBIB)
- Works down to 7.5 GPH using included flow restrictor discs
- Tank sits on ground for less stress on fittings and easier filling
- Adjustable dilution rates from 100:1 to 1,000:1

EZ-Flo Low-Pressure Tanks

IEZH34	¾ Gallon Tank @ 5-50 PSI	\$79.95
IEZH2	2 Gallon Tank @ 5-50 PSI	\$104.95
IEZ1GUP*	1 Gallon Tank @ 5-80 PSI	\$149.95

*IEZ1GUP is rated for high pressure.



CHAPIN PRO SERIES POLY SPRAYER

Anyone can use the Chapin ProSeries Poly Sprayer from the homeowner to a landscape professional. This sprayer features the SureSpray Anti-Clog filter, which will guarantee great performance every time. Use with fertilizers, weed killers, or pesticides.

APRO1	1 gallon	\$39.95
APRO2	2 gallon	\$44.95
APRO3	3 gallon	\$49.95



ECONOMICAL INJECTORS

Economical, flexible, and easy to use, these injectors are ideal for small to medium sized gardens, orchards, or grows. Hook them to your drip system to fertilize while you water.

CHAPIN HYDROFEED FERTILIZER INJECTOR

Ideal for small to medium-size gardens. Fertilizer injector comes with a clear tank for easy monitoring of usage, and funnel-top mouth for easy filling. Drain valve will allow you to quickly empty remaining product and water from the tank. Use with liquid, granular concentrates, or fish emulsion applications. Works best at 40 PSI. Maximum incoming pressure 60 PSI.

IHF16	16 oz. Tank	\$34.95
IHF24	24 oz. Tank	\$39.95
IHF32	32 oz. Tank	\$69.95

MAZZEI INJECTOR LINE

This Venturi-style injector is a great low-cost option that delivers excellent results. It's commercial grade with no moving parts, so it's easy to maintain and worry-free. Perfect for use with water soluble organic fertilizers.

NEW KIT ASSEMBLIES



Now a complete kit, with Mazzei, Flow Meter and Suction tube. Add it to your system with or without a bypass.

MAZZEI (VENTURI STYLE) FERTILIZER INJECTOR

Mazzei fertilizer injectors are commercial-grade, Venturi injectors with no moving parts to wear out or break down. As water passes through the unit, a pressure differential creates a vacuum that draws fertilizer into the line. Install on a bypass for less restriction (bypass not sold). For the Mazzei to work properly there must be a minimal pressure differential between the inlet pressure and the outlet pressure, this will create the vacuum effect. You will need to experiment to get the dosages required, but once operating, the Mazzei is incredibly reliable and relatively maintenance free. 1/2" and 3/4" Mazzei kits include Mazzei Injector, Suction Line Kit, and Flow meter.

- Pressure Range 20-100 PSI.
- Easy installation
- Energy efficient
- Male pipe thread (MPT) inlet and outlet

1/2" Injectors and Accessories

IM12VLFKIT	1/2" Very Low Flow Injector Kit (#K 283-S) ..	\$87.95
IM12LKIT	1/2" Low Flow Injector Kit (#K 287-S)	\$87.95
IM12HKIT	1/2" High Flow Injector Kit (#K 384-S)	\$87.95

3/4" Injectors and Accessories

IM34LKIT	3/4" Low Flow Injector Kit (#K 484A-S)	\$95.95
IM34HKIT	3/4" High Flow Injector Kit (#K 584-S)	\$95.95

1" Injectors and Accessories

IM1L	1" Low Flow Injector (#878)	\$89.95
IM1	1" High Flow Injector (#1078)	\$89.95
IM1SA	1" Suction Assembly (same as 1 1/2").	\$129.95

CHOOSE MODEL SIZE CAREFULLY.

Too large and it will not draw the fertilizer, too small and it will restrict the flow of your system. If in doubt, choose a smaller size injector and install on a bypass. We recommend using a bypass for all units for ease of adjustment and maintenance.

Mazzei Flow Chart (Venturi style)			
Size	Minimum Flow at 50 PSI Inlet	Fertilizer Draw with outlet pressure at	
		30 PSI (20 PSI drop)	10 PSI (40 PSI drop)
1/2" Very Low (#K 283-S)	30 GPH	2 GPH	6 GPH
1/2" Low (#K 287-S)	60 GPH	3 GPH	8 GPH
1/2" High (#K 384-S)	150 GPH	10 GPH	14 GPH
3/4" Low (#K 484A-S)	240 GPH	12 GPH	17 GPH
3/4" High (#584-S)	425 GPH	21 GPH	25 GPH
1" Low (#878)	750 GPH	56 GPH	75 GPH
1" High (#1078)	1050 GPH	86 GPH	92 GPH



GROWERS CHOICE



MIXRITE INJECTOR FOR THE PROFESSIONAL GROWER

This injector is precision made in Israel and is ideal when injecting either organic or synthetic fertilizers. The MixRite injector is the easiest commercial fertilizer injector to clean and maintain. With only three seals to replace, it can be rebuilt and put back into service in a fraction of the time other units require. It reliably meters fertilized solution into your line and is powered entirely by the water flowing through it. Choose the MixRite according to the concentration of fertilizer you want to add. Install on a bypass for easy cleaning and maintenance. A 2% internal bypass unit used for injecting highly corrosive solutions is available at Dripworks.com.

- Simple to install, operate, and maintain
- Pressure loss at max flow: 14.5 PSI
- Shutoffs on all models except IMR1
- UV-resistant plastic

Part #	Flow in GPH	Mix Ratios	Pressure Range	Inlet/Outlet	Max Flow	Price	Features
IMR1▲	5.4–660/GPH	100:1 1% (non-adjustable)	3–120	¾" MPT	11 GPM	\$329.95	This specific MixRite model is non-adjustable and does not have a manual shutoff. Ideal for cleaners that are not corrosive and fertilizers.
IMR2SO▲	5.4–660/GPH	500:1–50:1 .2 to 2%	3–120	¾" MPT	11 GPM	\$469.95	These models have a manual On-Off that will shut down additive injection, allowing a continual water flow. Select the model with the desired fertilizer dilution concentration (mix ratio) for the fertilizer or additive that you are injecting into your line. *Choose the IMR10V2 for less concentrated, organic fertilizers. The 10% allows for a higher dose or organic fertilizer.
IMR4SO▲	5.4–660/GPH	250:1–25:1 .4 to 4%	3–120	¾" MPT	11 GPM	\$459.95	
IMR10V2*▲	5.4–840/GPH	100:1–10:1 1 to 10%	3–120	¾" MPT	11 GPM	\$689.95	

Prevent water from flowing back into your home water supply with backflow prevention check valves and vacuum breakers at DRIPWORKS.COM

CONTROL YOUR GREENHOUSE ENVIRONMENT

Use these misters on patios and decks, in barns, greenhouses, and kennels, and around the pool. They are good for starting delicate seedlings, salad greens, and ferns.

Find greenhouse watering solutions at DRIPWORKS.COM



FOGGER WITH ANTI-DRIP

This versatile fogger from Rivulus is great for seed propagation, greenhouse humidification or livestock cooling. The built-in anti-drip prevents over-watering after the system shuts off. This is a high-pressure fogger with an optimal operating range of 50–70 PSI. Watering diameter 2'-3'.

MF2W 2-Way \$3.49
MF4W 4-Way \$4.95



VARI MISTER

The Vari Mister has a built-in valve to control the flow and pattern size of the spray. Maximum diameter is 36". Can be shut off when not in use. Maximum flow ranges from 4 GPH at 10 PSI to 7½ GPH at 30 PSI. 10–32 threaded base works with ¼" tubing or a Rigid Riser.

MV-5 \$4.69/5



TORNADO MISTERS

Higher flows for seed propagation and moisture-loving plants. Great for giant pumpkins! Simply insert into the end of ¼" tubing, mainline, or PVC.

- Even distribution
- Threaded base (10–24 thread)
- Pressure range: 20–60 PSI

All Tornado Misters \$2.95/5 \$52.00/100

Part #	Color	@ 20 PSI		@40 PSI	
		GPH	DIA	GPH	DIA
MTFB	Black	4	4'	5 ½	4'
MTFR	Red	8	6'	11 ½	6'



Fine Spray Overhead Sprinkler

Senninger®
AGRICULTURAL IRRIGATION | A Hunter Industries Company

INVERTED MINI WOBBLER

Specially designed for overhead applications. Great for seed propagation. Fine spray and outstanding uniformity.

- Base: ½" MPT
- Flow: 45–75 GPH
- Optimal Pressure: 20–25 PSI
- Covers large area

Part #	Nozzle Color	@ 20 PSI		@25 PSI		Price
		GPH	DIA*	GPH	DIA*	
MWIG	Gold	66/GPH	34'	75/GPH	34.5'	\$5.95
MWIBG	Beige	45/GPH	32'	60/GPH	32.5'	\$5.95
MWANTI	Anti-Drip Add-On (Sprinkler head sold separately)					\$7.95

*Diameter at 6' above beds.

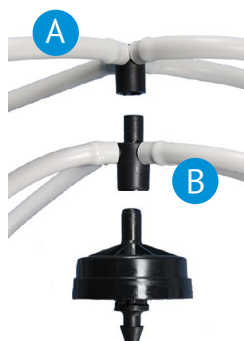
WOODPECKER MULTI-OUTLET DRIPPER ASSEMBLY

Use these assemblies to split the flow of one Woodpecker or Woodpecker Jr. (p. 26) into 4 or 8 containers. Reduces flow and saves money. Great for greenhouses and nurseries.

- Attaches to the outlet of the emitter
- Each assembly includes two 18" and two 30" tubes with Arrow Drippers attached
- DMWASS is for four outlets only
- DMWST is a stackable assembly

DMWASS	4-Way Flat Assembly	\$3.29
DMWST*	4-Way Stackable Assembly	\$3.49

*Use with DMWASS for 4 more containers. Woodpecker Emitters not included.



ASSEMBLY OPTIONS

These pre-assembled units can water 4, 8, or more containers coming off one Woodpecker PC emitter.

A DMWASS Flat Assembly

B DMWST Stackable Assembly



ANTI-D RIP DEVICES FOR HANGING MISTERS AND SPRINKLERS

In greenhouses with overhead irrigation, each sprinkler or mister assembly needs an anti-drip device to prevent damage to plants directly below. All parts have press-fit ends for easy installation. Use with Mini-Sprinkler Heads (p. 32) or Tornado Misters with press-fit bases (below). Note: The anti-drip device works in both directions. 10 PSI minimum to open.

MEAD	Anti-drip (minimum 10 PSI)	\$1.89
MEGRO	Grommet for PVC Insertion	\$1.39
MECPL	Press-fit Coupler	\$2.49/10
MEBARB-5	Barb for Poly Insertion	\$1.69/5
MEBARB-100	Barb for Poly Insertion	\$14.95/100
MTFBPR	Black Tornado Mister* (low flow)	\$2.95/5

*5.5 GPH/4" diameter at 40 PSI.

ASSEMBLY NOTES

These examples show two options for anti-drip device setup:
(A) When drilling into PVC pipe; (B) When punching into poly tubing.

INTO PVC

A A 7/16" hole is drilled into PVC, MEGRO inserted, and MEAD threaded into the grommet. Press-fit coupler (MECPL) joins the anti-drip device to the press-fit mister.

INTO POLY

B A hole is punched into poly tubing (punches, p. 16) and the assembled MEBARB + MEAD + press-fit mister is inserted.

PROTECT YOUR CROPS

Use our quality protective covering materials for greenhouses and high tunnels. We sell two materials that growers use to control your plants' environment and to safeguard their crops from the elements. Both materials are specifically formulated for greenhouse application.

Extend your growing season with high tunnels and greenhouses at DRIPWORKS.COM



CLEARSPAN HIGH TUNNEL GREENHOUSE

Extend your growing season, save water, and keep crops disease-free.

Ideal for vegetables, small fruit, cut flowers, and more.

- Frames are manufactured from our USA-made, triple-galvanized structural steel tubing.
- Made from strong copolymer resin, with tri-layer construction and UV additives. Film offers 92% light transmission. Comes with 4 year warranty.
- Triple-zippered end panels are 10 oz., 22 mil premium rip-stop, translucent fabric, complete with fabric clips for attaching.
- Easy four-sided ventilation. Roll-Up Sides feature our exclusive Twist-of-the-Wrist Roll-Up Assembly.
- Heavy-duty ground posts are included.

Call for pricing and shipping quote.

GREENHOUSE MATERIAL 12 MIL

Greenhouse material is cut to size to your specifications and priced by the square foot (sq. ft.). One-piece greenhouse material can be fabricated in sizes up to 150,000 sq. ft. Material under 1,000 sq. ft. are charged an additional \$40.00 handling fee.

Call for shipping quote.

- Tear and puncture resistant
- Allows up to 80% UV Transfer
- Custom cut to your specifications
- Fast shipping
- Bursting strength 280 PSI
- Max size 150,000 (sq. ft.)

PDB12CLEAR \$0.33 per sq. ft.



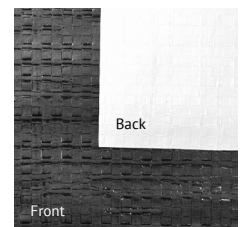
BLACK/WHITE 12 MIL

This extra-heavy, high-end reinforced cover is popular for creating artificial growing conditions that encourage multiple harvests annually. The black side keeps it dark the white side reflects the sun. Tarps are custom cut to size to your specifications and priced by the square foot (sq. ft.). One-piece tarps can be fabricated in sizes up to 150,000 sq. ft. Tarps under 1,000 sq. ft. are charged an additional \$40.00 handling fee.

Call for shipping quote.

- Tear and puncture resistant
- Reinforced double-sided cover
- Custom cut to your specifications
- Fast shipping
- Bursting strength 350 PSI
- Max Size 150,000 (sq. ft.)

PDB12BW \$0.31 per sq. ft.



This is a reinforced double-sided cover



FROST PROTECTION

Extend your growing season! Shield your plants and crops from wind, insects, and cold.

GCI ROWCOVER

GCI Rowcover shields plants from frost, cold, wind, and insects. It is an easy way to prolong the growing season in both spring and fall. Available in two weights for use on row crops, garden beds, shrubs, individual fruit trees, and deck containers.



LIGHTWEIGHT



MEDIUMWEIGHT

GCI Lightweight Frost Protection

Jumpstart or prolong the growing season. Increase yield and protect plants from frost, wind, and insect damage.

- 85% light transparency
- 0–4 degrees frost protection

GC05750	7' x 50'	\$21.95
GC057250	7' x 250'	\$82.95
GC057500	7' x 500'	\$159.95
GC0571000	7' x 1,000'	\$299.95

GCI Mediumweight Frost Protection

Use on nursery stock, vegetables, berries, and bedding plants. Protects from frost, wind, and insect damage.

- 70% light transparency
- 4–6 degrees frost protection

GC10750	7' x 50'	\$31.95
GC107250	7' x 250'	\$144.95
GC107500	7' x 500'	\$283.95
GC1071000	7' x 1,000'	\$429.95

Get more tips on protecting plants from freezing temps at [DRIPWORKS.COM](https://www.dripworks.com)

LONG-LASTING POND LINERS

REINFORCED POLY POND LINERS

For the highest-quality water containment with the longest-lasting material, our reinforced poly liners are the best choice. Made to order at the factory, they usually ship within days, allowing extremely fast installation. The liner is rolled onto a core with an unroll strap and, if possible, shipped directly to the site.

- The strongest, most flexible reinforced poly liners!
- High puncture resistance and tear strength
- Minimum 20–25 year life when covered
- NSF certified, can be used for potable water

Call for shipping quote

Reinforced Polyethylene Pond Liners				
Reinforced Polyethylene	20 mil PDB20	24 mil PDB24	30 mil PDB30	40 mil PDB40
Square foot price	\$0.41	\$0.49	\$0.59	\$0.73
lbs/1,000 sq. ft.	75	95	135	138
Max size (sq. ft.)	100,000	75,000	80,000	40,000
Expected life in years (exposed)	10	10	12	15
Warranty (covered)	20 yrs	20 yrs	20 yrs	20 yrs

Find how-to videos, pond calculators, and more about
pond care at [DRIPWORKS.COM/RESOURCES](https://www.dripworks.com/resources)



CLEAROUT

ClearOut will restore water clarity and balance. The beneficial bacteria will quickly and safely digest organic debris, helping improve pond odors.

- Clears water and supports a healthy ecosystem
- Easy to use water soluble packets
- Eliminates nutrients, odors and suspended organics
- All natural and safe for all aquatic life
- Treats ¼ acre for up to 3 months

CLROUT\$279.95



MUCKOUT

Clean the bottom of your pond with MuckOut; reduces 2" of muck per month. The beneficial bacteria will quickly and safely digest organic debris. Improve pond odors, helps keep your pond water clear and balanced. Safe for aquatic and domestic life, use as directed.

- Converts muck into odorless gas
- Great for beaches, docks, shorelines, or ponds and lakes
- Highly concentrated natural bacteria and enzyme formulation
- All natural and safe for all aquatic life
- Treats 1 acre for up to 3 months

MUKOUT\$119.95

PROTECT YOUR POND INVESTMENT

Shield your pond liner so it lasts for a thriving, healthy pond.



GEOTEXTILE POND LINER PROTECTIVE MATERIAL

Non-woven geotextile fabric is a puncture-resistant, cost-effective, long-term solution for protecting EPDM or Poly liners. Used as pond liner underlayment, the soft, 8 oz. fabric (like a wool blanket) protects liners from large rocks and other sharp objects that may be hidden in the soil (sharp gravel, tree branches, glass, metal, etc.).

In the photo above, geotextile has been installed as an underlayment to protect the liner from rocks and sharp objects.

Also used for:

- Site drainage
- French drains
- Leach field gravel covering
- Erosion control
- Use under Poly liners when necessary

Custom sizes available!

Orders can be matched to your pond liner purchase.

Geotextile Pricing			
Part #	Size	Size	Price
PDGEOB1515	Bundle	15' x 15'	\$89.95
PDGEOB1525	Bundle	15' x 25'	\$148.95
PDGEOB1575	Bundle	15' x 75'	\$443.95
PDGEOR15	Roll	15' x 300'	\$1,596.95

Pond liner should be unfolded over the geotextile.

EPDM RUBBER POND LINER

The most flexible and natural-looking pond liner

- Ideal for water gardens including waterfalls and streams
- The most flexible waterproof barrier for indoors or out
- UV stabilized for up to 20 years exposed to the sun
- Pricing subject to change. Call for quote.

EPDM Rubber Liner Pricing			
Part#	Dimension	Weight (lb.)	Price
PDEPDM520	5 x 20	30	\$159.00
PDEPDM550	5 x 50	83	\$374.95
PDEPDM5100	5 x 100	165	\$707.95
PDEPDM1010	10 x 10	28	\$158.95
PDEPDM1015	10 x 15	45	\$238.95
PDEPDM1050	10 x 50	165	\$707.95
PDEPDM1515	15 x 15	63	\$356.95
PDEPDM1520	15 x 20	84	\$475.95
PDEPDM1525	15 x 25	105	\$594.95
PDEPDM1550	15 x 50	225	\$1,061.95
PDEPDM2020	20 x 20	112	\$579.95
PDEPDM2025	20 x 25	165	\$792.95
PDEPDM2030	20 x 30	180	\$866.95
PDEPDM2050	20 x 50	300	\$1,414.95
PDEPDM2530	25 x 30	225	\$1,061.95
PDEPDM3030	30 x 30	270	\$1,425.95

Read more about ponds in our blog section at DRIPWORKS.COM

Shipping Instructions for Pond Liners

Please call 844.849.9573 for a freight quote and estimated delivery time.

Shipping is not included in the prices above.

Liners under 1,000 sq. ft. will be charged an additional \$40.00 handling fee. 100 sq. ft. minimum order requirement.

- Shipping is based on actual freight charges.
- Liners under 150 lb. are shipped via UPS. Liners over 150 lb. are shipped by common carrier.
- Someone must be present to inspect and accept delivery by common carrier. If you cannot unload the liner yourself, you will need to request a liftgate. Additional fees apply.
- Before signing the freight bill, inspect the liner to make sure it is the correct size and is undamaged.
- Shipping to a commercial site with equipment for unloading is recommended and can save money on freight charges.

STOCK UP ON THE MUST-HAVES

Make sure your supply cabinet is stocked with the parts and necessities that keep your drip irrigation system in working order.

Head online to see the full selection of parts and sizes at DRIPWORKS.COM



iFuse Purple Primer

Use the iFuse Purple Primer for softening and preparing of PVC and CPVC pipe and fittings. Removes grease, oil and dirt from the bonding surface of PVC and CPVC pipe and fittings.

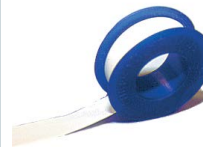
PCPP8 8 oz.\$9.95



Red Hot Blue Glue

A favorite with contractors. Blue, medium body, fast-setting cement. For quick pressurization and demanding conditions. Can also be used with IPS tubing and flexible PVC. Rated up through 6" PVC. Low odor. No primer needed.

PCBG4 4 oz.\$7.35
PCBG8 8 oz.\$12.95
PCBGPT Pint.\$19.95



Thread Sealant Tape

Every pipe-threaded fitting should be wrapped with thread sealant tape or sealed with pipe dope. Wrap 3-4 layers clockwise around the threads before connecting the parts.

PCTEF 520" x 1/2" Roll\$1.89



Full port

PVC Ball Valve (Threaded)

Part #	Size	Price
P12BVT▲	1/2"	\$2.95
P34BVT▲	3/4"	\$3.95
P1BVT▲	1"	\$4.95



PVC Ball Valve (Slip)

Part #	Size	Price
P12BVS▲	1/2"	\$2.95
P34BVS▲	3/4"	\$3.95
P1BVS▲	1"	\$4.95



Lead free

Brass Ball Valve (Threaded)

Part #	Size	Price
VBBILF12	1/2"	\$9.95
VBBILF34	3/4"	\$17.95
VBBILF1	1"	\$24.95



PVC Union Ball Valve

Part #	Size	Price
P34UNBV▲	3/4"	\$14.95
P1UNBV▲	1"	\$29.95
P112UNBV▲	1 1/2"	\$39.95



Tank Adapters with Neoprene Washer

Part #	Size	Price
P34TAD	3/4"	\$12.95
P1TAD	1"	\$17.95
P112TAD	1 1/2"	\$29.95
P2TAD	2"	\$44.95

These are used as outlets for storage tanks, ponds, and rainwater barrels. Creates a watertight seal with minimal effort.



Schedule 80 PVC Nipples and Risers

Part #	MPT	Length	Price
P12CN▲	1/2"	1 1/4"	\$0.29
P122N▲	1/2"	2"	\$0.39
P1212N▲	1/2"	12"	\$0.98
P34CN▲	3/4"	1 1/2"	\$0.39
P342N▲	3/4"	2"	\$0.45
P344N▲	3/4"	4"	\$0.59
P12N▲	1"	2"	\$0.59
P23N▲	2"	3"	\$1.89



Slip Union

Part #	Size	Price
P12SU▲	1/2"	\$5.95
P34SU▲	3/4"	\$6.95
P1SU▲	1"	\$9.95
P112SU▲	1 1/2"	\$17.95
P2SU▲	2"	\$19.95

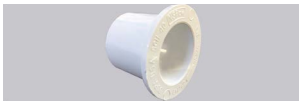


Threaded Union

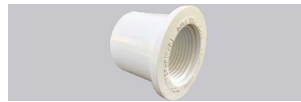
Part #	Size	Price
P12TU▲	1/2"	\$5.95
P34TU▲	3/4"	\$7.29
P1TU▲	1"	\$9.95
P112TU▲	1 1/2"	\$16.95
P2TU▲	2"	\$19.95

Key for PVC fitting types:

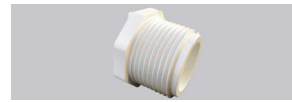
S = Slip (socket) FPT = Female Pipe Thread T = Threaded MPT = Male Pipe Thread



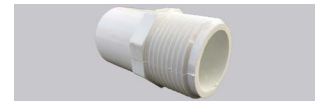
Bushings (S x S)		
Part #	Size	Price
P3412B▲	¾" x ½"	\$0.59
P112B▲	1" x ½"	\$0.95
P134B▲	1" x ¾"	\$1.15
P11234B▲	1½" x ¾"	\$1.69
P1121B▲	1½" x 1"	\$1.69



Bushings (S x FPT)		
Part #	Size	Price
P3414STB▲	¾" x ¼"	\$1.34
P3412STB▲	¾" x ½"	\$1.02
P112STB▲	1" x ½"	\$1.65
P134STB▲	1" x ¾"	\$1.65
P11234STB▲	1½" x ¾"	\$2.92
P1121STB▲	1½" x 1"	\$2.55



Threaded Bushing (MPT x FPT)		
Part #	Size	Price
P3412TTB▲	¾" x ½"	\$1.80
P112TTB▲	1" x ½"	\$2.52
P134TTB▲	1" x ¾"	\$2.52
P11234TTB▲	1½" x ¾"	\$4.59
P1121TTB▲	1½" x 1"	\$3.95



PVC Insert* x MPT		
Part #	Size	Price
P12MFA▲	½"	\$0.98
P34MFA▲	¾"	\$1.15
P1MFA▲	1"	\$1.95
P112MFA▲	1½"	\$3.19

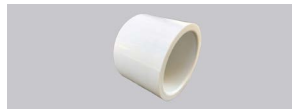
*Glues into PVC socket.



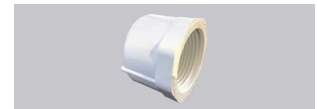
Elbow (S x S)		
Part #	Size	Price
P1290▲	½"	\$0.59
P3490▲	¾"	\$0.65
P3412R90▲	¾" x ½"	\$1.25
P190▲	1"	\$1.25
P11490▲	1¼"	\$2.18
P11290▲	1½"	\$2.39
P290▲	2"	\$3.25



45° Elbow (S x S)		
Part #	Size	Price
P1245▲	½"	\$1.02
P3445▲	¾"	\$1.55
P145▲	1"	\$1.89
P11245▲	1½"	\$3.29
P245▲	2"	\$4.25



Slip Cap		
Part #	Size	Price
P12CA▲	½"	\$0.55
P34CA▲	¾"	\$0.55
P1CA▲	1"	\$1.05
P112CA▲	1½"	\$1.59
P2CA▲	2"	\$1.85



Threaded Cap		
Part #	Size	Price
P12TCA▲	½"	\$1.16
P34TCA▲	¾"	\$1.35
P1TCA▲	1"	\$2.00



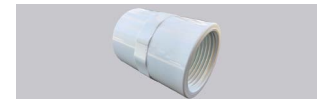
Coupler (S x S)		
Part #	Size	Price
P12C▲	½"	\$0.40
P34C▲	¾"	\$0.55
P3412RC▲	¾" x ½"	\$1.05
P1C▲	1"	\$0.95
P114C▲	1¼"	\$1.33
P112C▲	1½"	\$1.25
P2C▲	2"	\$2.25



Threaded Coupler (FPT x FPT)		
Part #	Size	Price
P12TC▲	½"	\$0.79
P34TC▲	¾"	\$1.44
P3412TRC▲	¾" x ½"	\$1.87
P1TC▲	1"	\$1.85
P134TRC▲	1" x ¾"	\$2.75
P112TC▲	1½"	\$12.49



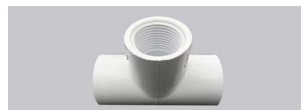
Male Adapter (MPT x S)		
Part #	Size	Price
P12MA▲	½"	\$0.55
P34MA▲	¾"	\$0.55
P34M12S▲	¾" x ½"	\$1.05
P1MA▲	1"	\$1.05
P114MA▲	1¼"	\$1.33
P112MA▲	1½"	\$1.80
P2MA▲	2"	\$2.35



Female Adapter (FPT x S)		
Part #	Size	Price
P12FA▲	½"	\$0.65
P34FA▲	¾"	\$0.85
P34F12S▲	¾" x ½"	\$1.15
P1FA▲	1"	\$1.05
P112FA▲	1½"	\$1.80
P2FA▲	2"	\$2.35



Tee (S x S x S)		
Part #	Size	Price
P12T▲	½"	\$0.76
P34T▲	¾"	\$0.89
P1T▲	1"	\$1.55
P114T▲	1¼"	\$2.65
P112T▲	1½"	\$3.10
P2T▲	2"	\$2.85



Combo Tee (S x S x FPT)		
Part #	Size	Price
P12STT▲	½"	\$1.02
P3412STT▲	¾" x ½"	\$1.33
P34STT▲	¾"	\$1.56
P112STT▲	1" x ½"	\$1.99
P134STT▲	1" x ¾"	\$2.92
P1STT▲	1"	\$2.75



Reducing Tee (S x S x S)		
Part #	Size	Price
P3412RT▲	¾" x ½"	\$1.05
P112RT▲	1" x ½"	\$1.79
P1121RT▲	1½" x 1"	\$4.95
P11234RT▲	1½" x ¾"	\$4.95



Marlex Street Ell (MPT x FPT)		
Part #	Size	Price
PMAR1290▲	½"	\$0.65
PMAR3490▲	¾"	\$0.85

FULL FLOW VALVES

AC VALVES

These high quality, in-line valves are designed for use with any of the electronic AC timers we carry. These valves operate at low flows to accommodate the lower water use of drip systems.



Galcon AC In-line Valves

These high-quality 24-volt AC valves are compatible with most AC timers. Galcon valves feature an easy-to-use manual on/off switch, female pipe thread (FPT) inlet and outlet, flow control stem, and a wide flow range. Pressure range for all valves is 7–145 PSI.

VGNAC34	¾" Valve, 0.5–26 GPM.....	\$33.95
VGNAC1	1" Valve, 0.5–44 GPM.....	\$34.95
VGN112	1½" Valve, 22–140 GPM.....	\$109.95
VGN2	2" Valve, 22–176 GPM.....	\$131.95



Baccara AC Valve

The only electric AC valve that works with low pressure and low flow. Baccara valves have a large pressure range of 4.3 to 140 PSI and a very low head loss at high flow rates. Their efficient design and advanced technology plastics make the valves strong with very low maintenance.

VBAC34	¾" Valve	\$32.95
VBAC1	1" Valve	\$39.95



Rainbird Anti-Siphon Valves

This is the only AC anti-siphon valve we have found that is specifically designed for the low flow of a drip system. Pressure range is 15–150 PSI. 3-year warranty. Note: The top of the valve should be 6" above the highest emitter in the system.

VRBAS34	¾" Valve, 0.2–22 GPM* ..	\$37.95
VRBAS1	1" Valve, 0.2–40 GPM*....	\$39.95

*With 7 PSI pressure loss.

Browse solenoid replacements
at **DRIPWORKS.COM**

DC VALVES

These high quality, full flow, in-line battery operated DC valves are to be used with commercial-grade battery timers.



Galcon Battery Valves – 2 wires

Use with Galcon DC Battery timers.

- Battery or manual operation
- Female pipe thread inlet and outlet
- Pressure Range: 10 to 150 PSI

VGND34	¾" Valve with Flow Control, 0.1–28 GPM	\$40.95
VGND1	1" Valve with Flow Control, 0.2–35 GPM.....	\$41.95
TGNVA112	1½" Valve, 20–130 GPM	\$121.95
TGNVA2	2" Valve, 30–160 GPM.....	\$132.95



Baccara Battery Valve

The only DC valve that works with low pressure and low flow.

- ¾" Female pipe thread inlet and outlet
- Flow Range: 0.5–22 GPM
- Pressure Range: 4.3–145 PSI

TDCBAC34	\$39.95
----------------	---------

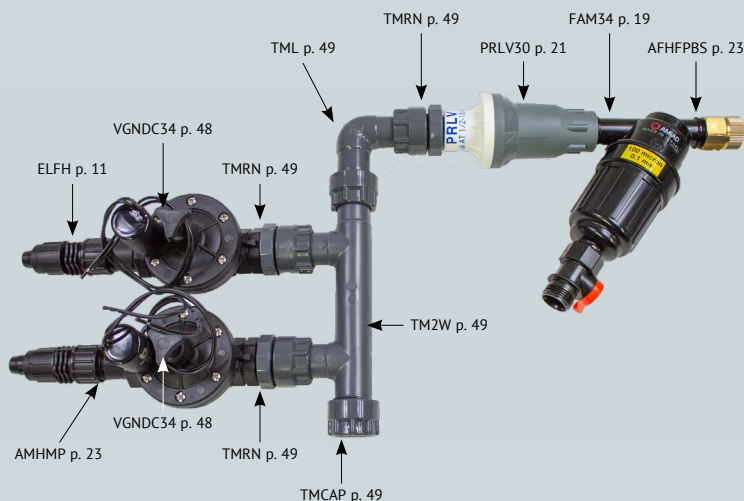


Alternator Valve

Don't pay for another timer or build a complex manifold to water two zones! Simply attach our hose-thread alternator valve. Ideal for remote applications.

- Flow switches outlets with each timer cycle
- No batteries required
- Allows flows up to 6 GPM
- Pressure range from 14–140 PSI
- Rugged, impact-resistant construction

TGNALT	\$41.95
--------------	---------



MANIFOLD SWIVEL SYSTEM

These PVC fittings let you create a flexible, compact manifold for almost any valve situation. The manifolds go together in minutes and the valves can be positioned more closely than if using standard PVC fittings. Valves are easy to align and systems are easy to expand.

All swivel pieces are 1" female pipe thread (with O-rings) and can be easily reduced for $\frac{3}{4}$ " valves. All manifold parts are 1" pipe thread unless noted. No glue or tools needed, so add-ons are a breeze. Use Thread Sealant Tape on all pipe threads without O-rings. Maximum working pressure is 150 PSI.

Find helpful tips on manifold selection and setup at DRIPWORKS.COM

MANIFOLD FITTINGS

All manifold swivel parts should be hand-tightened only. A manifold attached to a faucet should rest at ground level using a high-pressure hose extension (p. 22).



TM1S



TM34SOC / TM1SOC



TMC



TMT



TMCAP



TML



TMRN



TMN



TMOR



TMSCP



TM34INS / TM1INS

Multi Outlet Swivel Manifolds

TM4W▲	4 Outlet, 15" long.	\$32.25
TM3W▲	3 Outlet, 11" long.	\$27.95
TM2W▲	2 Outlet, 7½" long.	\$15.95

Manifold Fittings

TM1S▲	Swivel x 1" MPT.	\$4.95
TM34SOC▲	Swivel x $\frac{3}{4}$ " Slip Socket.	\$5.60
TM1SOC▲	Swivel x 1" Slip Socket.	\$4.95
TMC▲	Cross, 3 Swivels x 1" MPT.	\$13.25
TMT▲	Tee, 2 Swivels x 1" MPT.	\$8.95
TMCAP▲	Cap, 1" FPT.	\$2.15
TML▲	Elbow, 90° Swivel x 1" MPT.	\$8.35
TMRN	Reducing Nipple 1" x $\frac{3}{4}$ " MPT.	\$2.55
TMN▲	Nipple 1" x 1" MPT.	\$2.25
TMOR	Manifold O-Ring.	\$0.85
TMSCP▲	Swivel x Swivel Coupler.	\$6.85

Swivel x Barbed Fitting

TM34INS▲	Swivel x $\frac{3}{4}$ " Barb.	\$4.45
TM1INS▲	Swivel x 1" Barb.	\$5.35



LUBRICANT FOR O-RINGS & HOSE WASHERS

Give your O-rings, washers, and gaskets a better watertight seal and prevent them from drying out and cracking with a dab of this "miracle" lubricant.

HLUBE	4 oz. bottle.	\$5.95
-------	--------------------	--------



NEW WIFI TIMERS



See Video

AC Timer:

B-HYVE SMART INDOOR/OUTDOOR CONTROLLER

This timer offers WeatherSense technology that provides watering based on site conditions such as slope, soil type, sun/shade, historical et and live weather feeds, it automatically adjusts your controller to deliver the right amount of water to your plants. With the B-hyve controller you can control from anywhere. The B-hyve app is fully functional for android, iOS or web devices and gives you control wherever you need it program your timer on the app, at the timer, or let the weather-based software create a program for you.

- Easy Installation
- Indoor/Outdoor model
- EPA WaterSense Certified
- Durable and Secure
- Weather resistant case
- Use with 110V

TORBHV6	6-Station Timer.....	\$189.95
TORBHV12	12-Station Timer.....	\$225.95



Battery Hose End Controller:

B-HYVE XD HOSE FAUCET TIMER

The Brilliance of B-hyve® Science comes to life in our first hybrid hose tap water management device! You have the flexibility to program remotely from the B-hyve® mobile app. Compatible with iOS – iPhone, iPad and iPod Touch Running iOS 13.5 and higher. Android - Android Version 5.0 and higher. Requires 2.0 Hub to activate Smart functions.

- Single port or Two port models available
- Threads: 3/4" Hose Thread
- Pressure: 10-100 PSI
- Batteries: 2 AA batteries (not included)
- Warranty: 2 years.

TORBHVHS	Single Station Timer	\$59.95
TORBHVHS2	2-Port Timer	\$76.95
TORBHVHUB	Wi-Fi Hub.....	\$45.95



Find the right timer for your watering needs at DRIPWORKS.COM

TIMERS FOR EVERY NEED

DripWorks carries a large selection of drip irrigation AC, battery, solar, and windup timers. That gives you the option to match your timer to your source of power, or lack thereof.



BEST SELLER!

BLUETOOTH LCD TIMER

Easily program for weekly/daily or cyclic operation on LCD display. Standard female hose thread inlet / male hose thread outlet. Program from 14–90 ft. with clear view, easy programming with digital readout, manual override, manual rain off, and low battery indicator.

TGNHOSEBT \$74.95

Start Times	Up to 4 per day
Programming	Daily/Weekly or cyclical
Duration	1 minute to 12 hours
Stations	1 station
Batteries	One 9-volt alkaline*
Pressure Range	15 to 145 PSI
Flow Range	0.5 to 5.2 GPM @ 30 PSI



GROWERS CHOICE

HIGH FLOW LCD TIMER

Built-in high flow valve with ¾" or 1" female pipe thread inlet and outlet. ¾" model includes adapters for female hose inlet and male hose outlet. Adapters for other outlet sizes not included. Removable controller for easy programming, water-resistant construction, manual override, and low battery indicator.

TGNHFBTK	¾" High Flow Bluetooth Timer.	\$139.95
TGNHFK	¾" High Flow Timer	\$98.95
TGNHF1BT	1" High Flow Bluetooth Timer	\$124.95
TGNHF1	1" High Flow Timer.	\$98.95
TGNHFWPK	¾" High Flow Waterproof Timer	\$109.95

Start Times	Up to 4 times per day, every day up to 30 days.	Batteries	One 9-volt alkaline*
Programming	Daily up to 30 days	Pressure Range	10 to 115 PSI Bluetooth 10–145 PSI
Duration	1 minute to 12 hours	Flow Range	¾": 0.5 to 28 GPM @ 30 PSI 1": 0.5 to 32 GPM @ 30 PSI
Stations	1 station		



Closed

FLIP OPEN LCD TIMER

Flip open panel. Standard female hose thread inlet and male hose thread outlet. Watertight battery compartment. Program from 14-90 ft. with clear view.

TGNLIDBT	Bluetooth Timer.	\$79.95
TGNLID	Timer.	\$72.95

Start Times	Up to 4 per day	Batteries	One 9-volt alkaline*
Programming	Daily/weekly	Pressure Range	15 to 115 PSI Bluetooth 15-145 PSI
Duration	1 minute to 12 hours	Flow Range	0.5 to 5.2 GPM @ 30 PSI
Stations	1 station		

BATTERY TIMERS

Easy to install and to program, a battery timer will turn your system on and off at designated times so plants get the steady, consistent watering they need for optimum health and production.



MULTI-VALVE LCD TIMER

Single program timer for up to 4 hose-mounted valves. Valves operate in sequence. Includes 4-outlet manifold, timer, and two valves (add two more valves as needed).

TOR4W With Two Valves \$139.95

TOR4VA Add-on Valve \$24.95

Start Times	Up to 3 per day—select specific days of the week
Duration	1 to 99 minutes (per valve)
Stations	4 stations
Batteries	Two AA alkaline*
Pressure Range	10 to 80 PSI
Flow Range	0.5 to 6.5 GPM per each valve



ZERO PRESSURE TIMER

The Green Timer EVO operates at zero-pressure. This timer is ideal for gravity fed low-pressure systems. The TIZP uses a mechanical ball valve to open and close. Easy-to-set dials, low battery indicator, manual operation, standard female hose thread (FHT) inlet and male hose thread (MHT) outlet, and time delay function up to 12 hours.

TIZP \$49.95

Stations	1 station
Start Times	1, 2, 3, 4, 6, 8, 12 hours or 1, 2, 3, 7 days
Programming	First dial sets duration: 1 minute to 2 hours. Second dial sets frequency: every hour up to once a week.
Duration	Select 1, 3, 5, 10, 15, 20, 30, 60, 90, or 120 minutes
Batteries	Two AAA alkaline*
Pressure Range	0 to 115 PSI
Flow Range	Up to 7.5 GPM at 50 PSI
Warranty	2 years

FIND THE RIGHT TIMER FOR YOUR WATERING NEEDS

You can connect with live experts, check out how-to videos, calculate every aspect of your plan, and find the answers you need all in one place.

[Dripworks.com](https://dripworks.com)



**Drip Irrigation
AC, Battery,
Solar and
Windup Timers**

BATTERY DC TIMERS

Commercial-grade timers operate full-flow, inline DC valves that are sold separately (unless noted otherwise). Multiple zones can be watered from one timer with our automatic distribution valves.



GREENHOUSE BATTERY TIMER

Solid construction and watering durations down to 10 second intervals make this battery timer an exceptional bargain. Perfect for greenhouse operations and seed propagation. Independent programming for each valve, manual operation, rain sensor capable, master valve capable, and weather resistant.

TGNGH 1 Station\$143.95

TGNGH6 6 Station\$169.95

Start Times	Up to 4 per valve per day in irrigation mode; multiple start times available in misting mode.
Programming	Weekly/Cyclical
Duration	10 second to 12 hours
Stations	1 or 6 station models Use with Galcon DC valves, sold separately
Batteries	TGNGH: One 9-volt alkaline* TGNGH6: Two 9-volt alkaline*



1 TO 4 STATION BATTERY TIMER

These one or four station timers are ideal for home use. They are simple to install and program. Independent programming for each valve, manual operation, rain sensor capable, master valve capable, and weather resistant.

TGN1ST 1 Station\$149.95

TGN4ST 4 Station\$159.95

Start Times	Up to 4 per valve per day
Programming	Daily/Monthly
Duration	1 minute to 12 hours
Stations	1 or 4 station models. Use with Galcon DC valves, sold separately.
Batteries	One 9-volt alkaline*



6 TO 12 STATION BATTERY TIMER

This commercial-grade battery timer has a sturdy, waterproof housing that makes it ideal for watering multiple areas in locations that are too remote for an AC timer. Irrigation or propagation modes. Independent programming for each valve, rain sensor capable, manual operation, sensor port to individual valves, master valve capable, seasonal adjustment by program, and weather resistant.

TGND6 6 Station\$279.95

TGND9 9 Station\$321.95

TGND12 12 Station\$334.95

Start Times	Up to 4 per valve per day in irrigation mode; multiple start times available in misting mode	Batteries	TGND6: Two 9-volt alkaline*
Programming	Weekly/Cyclical		TGND9: Four 9-volt alkaline*
Duration	10 second to 12 hours		TGND12: Four 9-volt alkaline*
Stations	Available in 6, 9, or 12 station models. Use with Galcon DC valves, sold separately		

ELECTRONIC AC TIMERS

These are the most reliable timers that you can get for your irrigation system and generally have greater flexibility and longer life than battery timers.



4 TO 12 STATION AC TIMER

These controllers are especially suited for greenhouse and misting applications. Easy to install and operate.

TGNAC4	\$198.95
TGNAC6	\$214.95
TGNAC9	\$239.95
TGNAC12	\$249.95

Stations	Available in 4, 6, 9, or 12 station models.	Programs	Independent programs for each valve
Start Times	Up to 4 per valve per day in weekly schedule mode; multiple start times available in misting mode.	Watering Intervals	Once a minute to once every 30 days
Duration	5 seconds to 12 hours	Battery Backup	9-volt alkaline*
Ports	Pumpstart/Master Valve	Warranty	2 years



Expandable!

HUNTER PRO C AC TIMER

The Pro C controller is a 4-station model that can be expanded up to 16 stations to meet homeowner and commercial needs. Programmable delay between stations (0 seconds to 4 hours). Programmable rain delay. Optional remote control.

THPREXT4	4-Station Exterior Timer	\$219.95
THPRINT4	4-Station Interior Timer	\$219.95
THPRMOD	3-Station Add-On Module	\$69.95
THPRMOD9	9-Station Add-On Module	\$199.95

Stations	4 (up to 16 with modules)	Programs	3
Start Times	4 per program	Watering Intervals	1 to 31 days
Duration	1 minute to 6 hours	Battery Backup	Unnecessary
Weekly Schedule	Days of week, odd/even days	Warranty	2 years
Ports	Pumpstart/Master Valve, Rain sensor with bypass, 1 master plus 2 valves maximum open		



GALCON 6 STATION GREENHOUSE AC TIMER

This indoor irrigation and propagation controller is used for gardening, greenhouses, nurseries, and large grows. The easy-to-program LCD screen offers independent programming of each valve with the ability to operate two valves simultaneously. Program specific "windows" of time.

TGNGR6	\$129.95
--------------	----------

Duration	Irrigation mode: Duration 1 minute to 12 hours Irrigation Cycle 4 times a day to once every 30 days Propagation mode: 5 second increments		
Stations	6 stations	Programs	4 independent programs per station
Start Times	Irrigation mode: 4 Propagation mode: 1	Watering Intervals	1 to 30 days
Weekly Schedule	Days of week, AM/PM modes	Battery Backup	9-volt alkaline*
Ports	Pumpstart/Master Valve, Rain Sensor	Warranty	3 years

TIMERS FOR SPECIFIC NEEDS

Great solution for off-grid gardens. These are a great alternative to a battery or electronic timer.



LEIT SOLAR TIMER

Powered by ambient solar light, this DIG timer is the world's first sustainable irrigation timer with no battery or AC power source! No direct sunlight required. Valves have female pipe thread (FPT) inlet and outlet. Manual on/off, power saving LCD screen, monthly seasonal adjustment (0–200%), flow control handle, and timer is removable from valve for easy programming.

TDLT34 Timer with ¾" Valve . . . \$139.95
 TDLT1 Timer with 1" Valve. . . \$149.95

Stations	1 station
Start Times	Up to 5 per day
Programming	Weekly calendar, odd days, even days, or intervals from 1-30 days
Duration	1 minute to 6 hours
Ports	Rain sensor compatible, see online
Pressure Range	10 to 150 PSI
Flow Range	TDLT34: 0.1 GPM to 25 GPM TDLT1: 0.1 GPM to 30 GPM



SINGLE OUTLET WIND-UP TIMER

Simply turn the dial each time you want it to water, and the timer will automatically shut off the water flow. No batteries required. Comfort grip handle and manual on/off.

TORWU \$14.95

Stations	1 station
Duration	Up to 120 minutes
Pressure Range	5 to 120 PSI
Flow Range	Up to 8 GPM
Warranty	1 year

WHY A TIMER IS YOUR BEST INVESTMENT

When you're not there to turn the water on, or when you forget to turn it off and run up your water bill, a drip irrigation timer can be your best investment. A timer will turn your system on and off at designated times so plants get the steady, consistent watering they need for optimum health and production.

Whether you are looking for a drip irrigation battery-operated timer, a drip irrigation kit with timer, or something else, we can help you find the perfect solution for your watering needs.

TIMERS KEY

- **Battery Timers**
Hose-threaded, easy to install and program, and are typically limited to one valve.
- **High End Battery Timers**
Commercial-grade battery timers that can operate multiple pipe-threaded DC valves.
- **Electronic Timers**
Operate multiple 24-volt AC valves and require an AC power source.
- **Solar Timers**
Great alternative to a battery or electronic timer. These solar timers are powered by ambient light, require no backup power source, and are perfect for remote gardens.
- **Windup Timers**
An inexpensive alternative to a battery or electronic timer. Windup timers are great for those who forget to turn the water off.



190 Sanhedrin Circle
Willits, CA 95490-8753

PRSR STD
U.S. POSTAGE
PAID
DRIPWORKS, INC.

Emitter Tubing • Drip Tape • Mainline Tubing • Timers • Fittings • Injectors • Pond Liners

"My farm has purchased irrigation supplies from DripWorks since we started farming in 2010. Over the years we have appreciated the working relationship, prompt information and good pricing. DripWorks offers the things we need to farm with success while being off grid in steep terrain. As our operation has expanded from a small garden to a year-round CSA vegetable and cannabis farm, DripWorks has been there to answer questions and provide quality irrigation supplies. We're glad to support a local business that we feel has been instrumental in the success of our business!"

— Casey O'Neill,
HappyDay Farms

SAVE WATER, TIME, AND MONEY

DRIPWORKS.COM

844.849.9573

JOIN OUR COMMUNITY

Keep up with DripWorks on Facebook, YouTube, Instagram, and Pinterest.

@DripWorksUSA



MADE IN AMERICA

Here at DripWorks we believe that American-made products are still the standard of the world, and thankfully most of our products are made right here in the good ol' USA. We could easily buy cheap copies to sell at a lower cost but replacing all or part of a failing drip system is hardly cost effective and does not make for happy customers.

While the quality of our products is my primary concern, there are many other reasons to "buy American" which benefit our communities, our country, and the world. Products made in America are subject to stringent environmental and worker safety standards, as well as fair wages for the workers. Many of our suppliers have won awards for their cleaner, more sustainable, and eco-friendly practices. The shorter transportation of products to market also means less pollution and a smaller carbon footprint.

That's good for you, and the world.

I love supporting these companies, not just because they are local, but because they have earned it. Your continued support for quality products allows us to continue our mission for a cleaner, healthier, and more sustainable future for all of us, and the generations to come.

Thank you!
Scott Montez
General Manager