



190 Sanhedrin Circle
Willits, CA 95490-8753

PRSR STD
U.S. POSTAGE
PAID
DRIPWORKS, INC.

Emitter Tubing • Drip Tape • Mainline Tubing • Timers • Fittings • Injectors • Pond Liners

SAVE WATER, TIME, AND MONEY

DripWorks provides you with durable, high quality, and long lasting products made in the USA that help your plants, crops, and gardens thrive.

DRIPWORKS.COM
800.522.3747

JOIN OUR COMMUNITY

Keep up with Dripworks on Facebook, YouTube, Instagram, and Pinterest.

@DripWorksUSA



BEST SELLER!

GARDEN BED KITS

Everything you need to create beds in any shape or size. **Available in 3 sizes for any size job.**

SEE PAGE 5 FOR DETAILS



DripWorks

Quality Drip Irrigation



2021 Product Catalog

Dripworks.com | 800.522.3747

TABLE OF CONTENTS

Listed by product

| | |
|--|-------|
| Adapters | 22-23 |
| Complete Irrigation Kits | 4-7 |
| Composting | 36 |
| Drip Tape | 12 |
| Emitters | |
| Basic Drip Emitters | 25 |
| Pressure Compensating | 26-27 |
| Emitter Tubing ½" | 9 |
| Fertilizer Injectors | 37-39 |
| Fittings | |
| Barbed Fittings | 24 |
| Drip Tape Fittings | 13 |
| Easy Loc Fittings | 10-11 |
| ⅛" and ¼" Microfittings | 15 |
| Manifold Fittings | 49 |
| PVC Fittings & Accessories | 46-47 |
| Filters | |
| Garden Filters | 18 |
| Large Filters | 19-20 |
| Freeze Protection | 43 |
| General Information | 28-29 |
| Greenhouse Watering | 40-41 |
| Greenhouses | 42 |
| High Tunnels | 42 |
| Hose Fittings | 22-23 |
| Magnetic Water Conditioning | 35 |
| Mainline Tubing | 8 |
| Micro Tubing | 16 |
| Pond Liners & Pond Care | 44-45 |
| Pressure Regulators | 21 |
| Punches | 16 |
| Soaker Dripline ¼" | 14 |
| Sprayers | |
| Adjustable Sprayers & Shrubblers | 30-31 |
| Mini-Sprinklers | 32 |
| Pressure Compensating Sprinklers | 34 |
| Support Stakes & Hold Downs | 17 |
| Timers | |
| Bluetooth | 50-51 |
| Battery DC | 52 |
| Electric AC | 53 |
| Solar & Windup | 54 |
| Valves | |
| Battery (DC) | 48 |
| Electronic (AC) | 48 |
| Manual Ball Valves | 46 |



Established in 1991, the DripWorks catalog and the Dripworks.com website offer a well thought out and trusted selection of products and information for our community of passionate gardeners and professional farmers of all types. We provide the highest quality, American-made drip irrigation supplies to save you time, money, and water. Our loyal customers appreciate the human touch that DripWorks offers, with customer service representatives available by phone or online chat to help you and answer your questions.

At Dripworks.com you will find clear and comprehensive information, videos, a Drip Planning Guide, and other resources to make purchasing easy whether you are experienced in drip irrigation or a novice. Check out the large library of videos on our website and on YouTube.

If we can help you set up your drip system or expand on what you have already set up, let us know. Our experience will help direct you to the right products for your specific situation. Join our community and share your success and bounty with us on Facebook, Instagram, and Pinterest.

Don't underestimate the convenience and importance of drip irrigation!

Leon Springer
DripWorks, President/Owner



“My dad settled in Mendocino County in the 1970s on the same mountain as the owner of DripWorks. I have known him since I was a kid. They have been providing our family and now our commercial farm with the best quality drip irrigation products and advice for decades. They have really dialed in what vegetable gardeners and farmers need from row crops to show plants.”

— Daniel Morford,
Heart Rock Mountain Farm
@heartrockmountainfarm



ALWAYS HERE FOR YOU

Our experts know their stuff and they're here to help. Live chat at [Dripworks.com](https://dripworks.com) or 1.800.522.3747 Mon-Fri, 8am to 4pm PST.



FREE ONLINE RESOURCES

Find how-to videos, drip planning guides, FAQs, and more on our Resources page at [Dripworks.com](https://dripworks.com)



ORDERING IS EASY!

Place your DripWorks order online or give us a call.

[Dripworks.com](https://dripworks.com)
800.522.3747



JOIN OUR COMMUNITY

Keep up with DripWorks on Facebook, Instagram, YouTube and Pinterest.

@DripWorksUSA



SIZED TO FIT YOUR NEEDS

Setting up an irrigation system is never a “one size fits all” project. You need options and we offer them. Head to [Dripworks.com](https://www.dripworks.com) to shop our full line of parts and learn more about the different kit sizes we offer.

A kit isn’t completely efficient without a timer. Shop at [DRIPWORKS.COM](https://www.dripworks.com)

BEST SELLER!

DRIP TAPE KITS FOR ROW CROPS

For long rows and large raised beds, drip tape is a favorite for backyard gardeners.



Small Drip Tape Kit

Waters 10 20' rows. (Expands to 1,200' of low-flow drip tape.)

- 200' of Drip Tape
- Filter and Pressure Regulator
- 50' of ½" Mainline Tubing
- ½" Mainline and Drip Tape Fittings
- Punch and Hold Down Stakes

| | | | |
|--------|----------------|-------|----------|
| KDT1 | Small Kit | | \$89.95 |
| KDT1-T | Kit plus Timer | | \$139.95 |

Medium Drip Tape Kit

Waters 20 100' rows (½ acre*).

- 2,000' of Drip Tape
- Filter and Pressure Regulator
- 100' of ½" Mainline Tubing
- ½" Mainline and Drip Tape Fittings
- Punch and Hold Down Stakes
- High Flow Hose Y**

| | | | |
|--------|----------------|-------|----------|
| KDT2 | Medium Kit | | \$295.95 |
| KDT2-T | Kit plus Timer | | \$398.95 |

Large Drip Tape Kit

Waters 40 100' rows (¼ acre*).

- 4,000' of Drip Tape
- Filter and Pressure Regulator
- 200' of ¾" Mainline Tubing
- ¾" Mainline and Drip Tape Fittings
- Punch and Hold Down Stakes
- High Flow Hose Y**

| | | | |
|---------|----------------|-------|----------|
| KDT3▲ | Large Kit | | \$479.95 |
| KDT3-T▲ | Kit plus Timer | | \$598.95 |

Drip Tape is low-flow, 15 mil, emitters spaced 8" OC. *Acreage estimations based on 33" row spacing. Your situation may vary.
**High Flow Hose Y (HYVHPL, p. 22) is used to divide the system into two zones. Note: Use a high-flow timer for the Medium and Large Drip Tape Kits.

COMPLETE GARDEN BED IRRIGATION KITS

These kits include all of the parts you need to go from your faucet to your garden beds. Each kit includes our popular and versatile ¼" Soaker Dripline. Soaker Dripline is flexible and can be used in straight rows, curved around plants and snaked through dense planting areas.



GARDEN BED KITS IN 3 SIZES

Everything you need to create beds in any shape or size.



Small Garden Bed Kit

Waters up to 3 Beds.**

- 100' Soaker Dripline*
- ½" and ¼" Fittings
- 50' of ¼" Tubing
- Filter and PSI Regulator
- Punch and Hold Downs
- 50' of ½" Mainline Tubing

| | | | |
|--------|------------------|-------|----------|
| KGB1 | Small Kit | | \$69.95 |
| KGB1-T | Kit plus Timer** | | \$119.95 |

Medium Garden Bed Kit

Waters up to 9 Beds.**

- 300' Soaker Dripline*
- ½" and ¼" Fittings
- 100' of ¼" Tubing
- Filter and PSI Regulator
- Punch and Hold Downs
- 100' of ½" Mainline Tubing

| | | | |
|--------|--------------------|-------|----------|
| KGB2 | Medium Kit | | \$109.95 |
| KGB2-T | Kit plus Timer***† | .. | \$159.95 |

Large Garden Bed Kit

Waters up to 18 Beds.**

- 600' Soaker Dripline*
- ¾" and ¼" Fittings
- 200' of ¼" Tubing
- Filter and PSI Regulator
- Punch and Hold Downs
- 250' of ¾" Mainline Tubing

| | | | |
|---------|--------------------|-------|----------|
| KGB3▲ | Large Kit | | \$249.95 |
| KGB3-T▲ | Kit plus Timer***† | . | \$359.95 |

*Emitters Spaced 12" OC. **Based on 4'x8' beds. ***† TGNLIDBT (p. 51). ****† TGNHFBT (p. 51) Note: We recommend a high-flow timer with Large Kit (p. 51).

DRIP IRRIGATION KITS FOR UNIQUE SITUATIONS

Careful thought and years of experience helping customers design their irrigation systems led us to come up with these kits with a focus on specific types of gardens. Our kits are simple to install, and they come with easy-to-follow instructions and online videos to give you confidence and clear instruction.



ROSE AND SHRUB KITS

Ideal for bushes, shrubs, or small trees.

Small Rose and Shrub Kit

Waters up to 15 bushes.

- 15 PC Shrubblers
- Filter and PSI Regulator
- ¼" and ½" Fittings
- Punch and Hold Down Stakes
- 50' of ½" Mainline Tubing

| | | | |
|---------|----------------|-------|----------|
| KRS1 | Small Kit | | \$64.95 |
| KRS1-T* | Kit plus Timer | | \$109.95 |

Medium Rose and Shrub Kit

Waters up to 30 bushes.

- 30 PC Shrubblers
- Filter and PSI Regulator
- ¼" and ½" Fittings
- Punch and Hold Down Stakes
- 100' of ½" Mainline Tubing

| | | | |
|---------|----------------|-------|----------|
| KRS2 | Medium Kit | | \$95.95 |
| KRS2-T* | Kit plus Timer | | \$149.95 |

*Kit plus timer (TGNLIDBT).

INDIVIDUAL PLANT KITS



For any garden; just place emitters where needed.

Small Individual Plant Kit

Waters up to 60 plants.

- 60 Take-Apart Emitters
- Filter and PSI Regulator
- ¼" and ½" Fittings
- Punch and Hold Down Stakes
- 50' of ½" Mainline Tubing

| | | | |
|---------|----------------|-------|----------|
| KIP1 | Small Kit | | \$74.95 |
| KIP1-T* | Kit plus Timer | | \$119.95 |

Medium Individual Plant Kit

Waters up to 140 plants.

- 140 Take-Apart Emitters
- Filter and PSI Regulator
- ¼" and ½" Fittings
- Punch and Hold Down Stakes
- 100' of ½" Mainline Tubing

| | | | |
|---------|----------------|-------|----------|
| KIP2 | Medium Kit | | \$119.95 |
| KIP2-T* | Kit plus Timer | | \$164.95 |

*Kit plus timer (TGNLIDBT).



DECK GARDEN KITS

Quick, easy setup frees you from hand watering planters and pots.

Small Deck Garden Kit

Waters up to 45 pots.

- 100' of Soaker Dripline
- 20 Pot Drippers
- Filter and PSI Regulator
- ¼" and ½" Fittings
- Punch and Hold Down Stakes
- 50' of ½" Mainline Tubing

| | | | |
|---------|----------------|-------|----------|
| KDG1 | Small Kit | | \$79.95 |
| KDG1-T* | Kit plus Timer | | \$124.95 |

Medium Deck Garden Kit

Waters up to 180 pots

- 300' of Soaker Dripline
- 80 Pot Drippers
- Filter and PSI Regulator
- ¼" and ½" Fittings
- Punch and Hold Down Stakes
- 100' of ½" Mainline Tubing

| | | | |
|---------|----------------|-------|----------|
| KDG2 | Medium Kit | | \$169.95 |
| KDG2-T* | Kit plus Timer | | \$209.95 |

*Kit plus timer (TGNLIDBT).



If it needs to be watered, we've got the kits to do it at [DRIPWORKS.COM](https://www.dripworks.com)

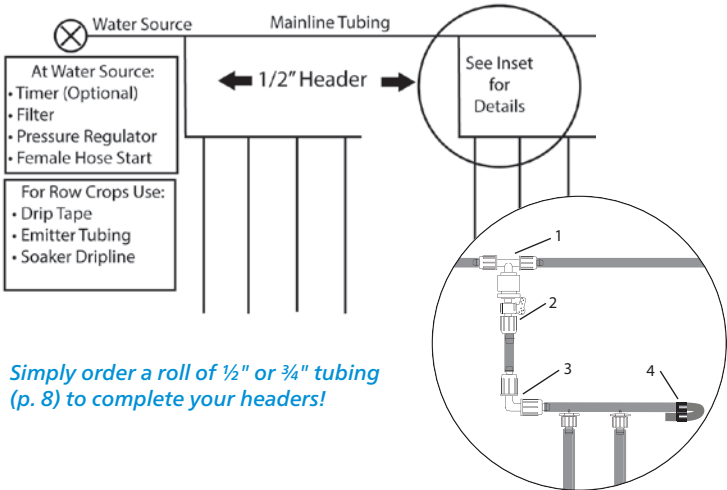
EASILY CREATE ZONED IRRIGATION WITH YOUR DRIP TAPE KITS

Adding header lines is a quick way to divide your irrigation system into multiple, smaller sections (zones).

Header package includes:

1. Female Tee (to branch off your mainline)
2. Male Adapter with Shutoff (to shut off the zone)
3. 90° Elbow (to make a right angle turn)
4. Figure Eight End (to seal off the end of the header)

| | | | | |
|-------|-------------|-------|---------|-------------|
| KHA12 | ½" Mainline | | \$10.95 | \$89.95/10 |
| KHA34 | ¾" Mainline | | \$18.95 | \$159.95/10 |



Simply order a roll of ½" or ¾" tubing (p. 8) to complete your headers!



MAINLINE TUBING

This flexible, low-density polyethylene tubing is the foundation of a drip irrigation system. Simply punch holes in the strong yet pliable material to insert emitters, transfer barbs, or sprayers; then shape into straight line or curved setups.



1/2" Mainline Tubing

Measures almost 3/4" in diameter. Recommended flow rate is 0–240 gallons per hour (GPH). (.600" ID–.700" OD)

| | | |
|--------|-------------|----------|
| 1250 | 50' Roll | \$13.95 |
| 12100 | 100' Roll | \$18.95 |
| 12500 | 500' Roll | \$68.95 |
| 121000 | 1,000' Roll | \$129.95 |

3/4" Mainline Tubing

Measures almost 1" in diameter. Recommended flow is 0–480 gallons per hour (GPH). (.830" ID–.940" OD)

| | | |
|-------|-----------|----------|
| 3450 | 50' Roll | \$21.95 |
| 34100 | 100' Roll | \$31.95 |
| 34250 | 250' Roll | \$74.95 |
| 34500 | 500' Roll | \$112.95 |

This polyethylene tubing is not rated for constant pressure. Use Easy Loc or barbed fittings (pp. 10, 11, and 24). Handles up to 50 PSI.



Oval Hose™

Commercial systems use this hose mainly as a high-flow, low-pressure header for Drip Tape. Larger diameter polyethylene is extruded in an oval shape to save space for shipping. Not rated for constant pressure. Uses standard barbed fittings and hose clamps, or 1" Easy Loc fittings for 1" Oval Hose.

| Part # | Tubing Size | Roll Size | Maximum Operating Pressure | Flow | Price |
|---------|-------------|-----------|----------------------------|--------|----------|
| F1250 | 1" | 250' | 42 PSI | 13 GPM | \$98.95 |
| F112150 | 1½" | 150' | 21 PSI | 35 GPM | \$94.95 |
| F112300 | 1½" | 300' | 21 PSI | 35 GPM | \$184.95 |
| F2150 | 2" | 150' | 21 PSI | 73 GPM | \$114.95 |



GROWER'S CHOICE



1/2" PRESSURE COMPENSATING EMITTER TUBING

The most versatile product for larger plantings! Great for orchards and large growers.

- Greatly reduces installation time
- Perfect for hilly terrain and long rows
- 0.5 or 1.0 GPH pressure compensating emitters
- 600" ID x .700" OD (same size as our 1/2" mainline)
- Pressure range 10–50 PSI

Watch our how-to videos at [DRIPWORKS.COM](https://www.dripworks.com)

| Part # | Emitter Spacing | Emitter Flow | Roll Size | Flow/100' @10-50 PSI | Max Row Length | Price |
|------------|-----------------|--------------|-----------|----------------------|----------------|----------|
| DET95 | 9" | 0.5 GPH | 100' | 67 GPH | 300' | \$39.95 |
| DET95-500 | 9" | 0.5 GPH | 500' | 67 GPH | 300' | \$174.95 |
| DET91 | 9" | 1.0 GPH | 100' | 133 GPH | 190' | \$39.95 |
| DET91-500 | 9" | 1.0 GPH | 500' | 133 GPH | 190' | \$174.95 |
| DET125 | 12" | 0.5 GPH | 100' | 50 GPH | 450' | \$34.95 |
| DET125-500 | 12" | 0.5 GPH | 500' | 50 GPH | 450' | \$149.95 |
| DET121 | 12" | 1.0 GPH | 100' | 100 GPH | 250' | \$34.95 |
| DET121-500 | 12" | 1.0 GPH | 500' | 100 GPH | 250' | \$149.95 |
| DET181 | 18" | 1.0 GPH | 100' | 67 GPH | 350' | \$32.95 |
| DET181-500 | 18" | 1.0 GPH | 500' | 67 GPH | 350' | \$129.95 |
| DET241 | 24" | 1.0 GPH | 100' | 50 GPH | 400' | \$29.95 |
| DET241-500 | 24" | 1.0 GPH | 500' | 50 GPH | 400' | \$119.95 |
| DET361 | 36" | 1.0 GPH | 100' | 33 GPH | 550' | \$24.95 |
| DET361-500 | 36" | 1.0 GPH | 500' | 33 GPH | 550' | \$109.95 |

| Soil Type | Annuals, Ground Covers, Gardens | | Large Bushes, Shrubs, Beds, Perennials | |
|-------------|---------------------------------|-----------------|--|-----------------|
| | Row Spacing | Emitter Spacing | Row Spacing | Emitter Spacing |
| Medium Sand | 9" | 9" or 12" | 15" to 18" | 12" |
| Loam | 9" to 12" | 12" or 18" | 18" to 24" | 18" |
| Clay Loam | 12" to 18" | 18" | 20" to 30" | 18" |
| Clay | 24" | 18" | 24" to 36" | 24" |

irritec



EASY LOC FITTINGS

Easy Loc connectors offer maximum design freedom and solid reliability. You'll find all the styles you need to control the flow when and where you need it.

Get helpful tips on using Easy Loc Fittings at DRIPWORKS.COM

WHAT'S YOUR TUBING SIZE?

Simply determine your standard tube size and choose the Easy Loc fittings to match.



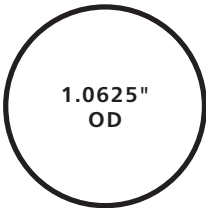
1/2" EASY LOC FITTINGS
Compatible with 1/2" drip tubing
.680"-.720" OD.

Try our 1/2" Mainline Tubing (p. 8)
and 1/2" Pressure Compensating
Emitter Tubing (p. 9).



3/4" EASY LOC FITTINGS
Compatible with 3/4" drip tubing
.880"-.970" OD.

Try our 3/4" mainline tubing (p. 8).



1" EASY LOC FITTINGS
Compatible with 1" oval hose
1.025"-1.085" OD.

Try our 1" Oval Hose (p. 8).

1/2", 3/4", AND 1" EASY LOC FITTINGS



Female Hose Start with Swivel
Attach mainline tubing to a faucet, hose end, or male hose threads of a filter or adapter. A common way to start a system.

| | | |
|--------|------|--------|
| ELFH | 1/2" | \$1.29 |
| ELFH34 | 3/4" | \$2.79 |
| ELFH1 | 1" | \$4.89 |



Coupler
For joining two pieces of mainline tubing. A necessary repair part.

| | | |
|-------|------|--------|
| ELC | 1/2" | \$0.79 |
| ELC34 | 3/4" | \$2.29 |
| ELC1 | 1" | \$2.49 |



Tee
Use to branch off mainline tubing.

| | | |
|-------|------|--------|
| ELT | 1/2" | \$1.89 |
| ELT34 | 3/4" | \$4.79 |
| ELT1 | 1" | \$6.49 |



Elbow (90° bend)
Use to go around a corner that might kink the mainline tubing.

| | | |
|-------|------|--------|
| ELL | 1/2" | \$1.49 |
| ELL34 | 3/4" | \$3.49 |
| ELL1 | 1" | \$4.59 |



Male Hose End with Cap
Used to end a line. The screw-off cap makes it easy to flush lines.

| | | |
|--------|------|--------|
| ELMC | 1/2" | \$0.95 |
| ELMC34 | 3/4" | \$1.89 |
| ELMC1 | 1" | \$2.19 |



Male Hose End
To flush your lines after each watering, use with a flush valve (VFH, p. 43).

| | | |
|--------|------|--------|
| ELMH | 1/2" | \$0.79 |
| ELMH34 | 3/4" | \$1.29 |



Male Pipe End
Use this male pipe thread fitting to connect tubing to pipe threads.

| | | |
|---------|------|--------|
| EL12M | 1/2" | \$0.69 |
| EL34M34 | 3/4" | \$1.29 |
| EL1MP1 | 1" | \$1.69 |



1/2" x 1/4" Barb
Create a 1/2" branch line without a Tee. Flow through is approximately 80 GPH.

| | | |
|-------|-------------|--------|
| EL14B | 1/2" x 1/4" | \$1.29 |
|-------|-------------|--------|



Valve
A full port inline valve with an easy-to-grip handle.

| | | |
|--------|------|--------|
| ELV12 | 1/2" | \$1.95 |
| ELSO34 | 3/4" | \$3.79 |
| ELTCV1 | 1" | \$6.95 |



Reducing Coupler
Use this reducing coupler to adapt to a larger or smaller tubing.

| | | |
|---------|-------------|--------|
| ELRC | 3/4" x 1/2" | \$2.39 |
| ELRC134 | 1" x 3/4" | \$2.59 |



Reducing Tee
This tee fitting is used to adapt down from a larger tubing size, when branching into smaller tubing.

| | | |
|---------|--------------------|--------|
| ELRT | 3/4" x 3/4" x 1/2" | \$4.95 |
| ELRT112 | 1" x 1/2" | \$5.95 |
| ELRT134 | 1" x 3/4" | \$6.29 |



Reducing Elbow
Use this reducing elbow to adapt to a smaller size tubing.

| | | |
|------|-------------|--------|
| ELRL | 3/4" x 1/2" | \$3.89 |
|------|-------------|--------|



Female Hose Tee with Swivel
An easy way to attach two mainlines to one hose connection.

| | | |
|--------|------|--------|
| ELFT | 1/2" | \$1.95 |
| ELFT34 | 3/4" | \$4.49 |



Male Hose Tee
Use this tee fitting to attach to any hose thread fitting.

| | | |
|--------|------|--------|
| ELMT | 1/2" | \$1.79 |
| ELMT34 | 3/4" | \$2.49 |



Female Hose Elbow with Swivel
When there is no room to use a straight fitting to start a system.

| | | |
|--------|------|--------|
| ELFL | 1/2" | \$1.59 |
| ELFL34 | 3/4" | \$2.95 |



Cross
A 4-way fitting to attach mainline tubing and connect to multiple rows.

| | | |
|-------|------|--------|
| ELX | 1/2" | \$2.95 |
| ELX34 | 3/4" | \$7.95 |



Easy Loc Socket
Glues over PVC pipe of the same size or into larger slip fitting.

| | | |
|-----------|-----------------|--------|
| EL34S | 1/2" x 3/4" PVC | \$0.95 |
| EL34SPIG1 | 3/4" x 1" PVC | \$1.39 |
| EL1SOC | 1" | \$1.69 |



Spigot
These fittings will glue into a PVC fitting of the same size.

| | | |
|----------|------|--------|
| EL12S | 1/2" | \$0.95 |
| ELA34 | 3/4" | \$1.39 |
| EL1SPIG1 | 1" | \$1.69 |

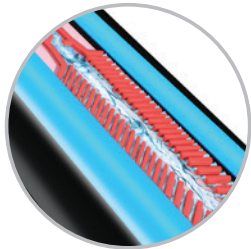


AQUA-TRAXX DRIP TAPE

GROWER'S CHOICE



- Aqua-Traxx Azul is the latest generation of tape technology from Toro. It features an innovative emitter design that protects the labyrinth from debris and maximizes clog resistance making it the perfect method of irrigating row crops and raised beds.
- Low-cost, effective watering for row crops and raised beds
 - Superb watering efficiency and uniformity
 - Ideal for above ground, mulched or buried applications
 - Great for low-pressure systems, works down to 4 PSI
 - Requires only 120 mesh filtration (filters, pp. 18, 19, and 20)
 - Use with drip tape fittings (p. 13)
 - Low operating pressures, see chart below (regulators, p. 21)
 - Typically lasts up to 7 years if covered, and 2–5 years on surface



| Part # | Mil | Emitter Spacing | Flow Type | Flow per 100' @ 8 PSI | Roll Length | Max Row Length | Price Each |
|--------------------------------|-----|-----------------|-----------|-----------------------|-------------|----------------|------------|
| 15 Mil-Maximum Pressure 15 PSI | | | | | | | |
| TAZ1508HSR | 15 | 8" OC | High | 40 GPH | 1,000' | 200' | \$109.95 |
| TAZ1508LSR | 15 | 8" OC | Low | 20 GPH | 1,000' | 380' | \$109.95 |
| TAZ1508H | 15 | 8" OC | High | 40 GPH | 4,000' | 200' | \$289.95 |
| TAZ1508L | 15 | 8" OC | Low | 20 GPH | 4,000' | 380' | \$289.95 |
| TAZ1512H | 15 | 12" OC | High | 27 GPH | 4,000' | 280' | \$298.95 |
| TAZ1512L | 15 | 12" OC | Low | 13 GPH | 4,000' | 550' | \$298.95 |
| 8 Mil-Maximum Pressure 15 PSI | | | | | | | |
| TAZ804SR | 8 | 4" OC | Med | 60 GPH | 2,000' | 140' | \$119.95 |
| TAZ804 | 8 | 4" OC | Med | 60 GPH | 7,500' | 140' | \$298.95 |
| TAZ808H | 8 | 8" OC | High | 40 GPH | 7,500' | 200' | \$298.95 |
| TAZ808L | 8 | 8" OC | Low | 20 GPH | 7,500' | 380' | \$298.95 |
| 6 Mil-Maximum Pressure 12 PSI | | | | | | | |
| TAZ606 | 6 | 6" OC | Low | 27 GPH | 10,000' | 280' | \$329.95 |

DRIPWORKS DRIP TAPE

- Packaged in a convenient, easy-to-store dispenser. The precision-designed flow path reduces clogging and the slit outlet prevents back suction of soil. To create a tight seal, be sure tape is warm and pliable before attaching the 5/8" start fittings (LSB/LSBSO) and end fittings (LSGS/LSPLUG).
- Superior clog resistance
 - Works above ground, mulched or buried
 - Use with 5/8" tape fittings
 - Lasts years; lifespan considerably increased if tape is covered

| Part # | Mil | Emitter Spacing | Flow Type | Roll Length | Price Each |
|-------------|-----|-----------------|-----------|-------------|------------|
| TDE804100 | 8 | 4" OC | Medium | 100' | \$18.95 |
| TDE1508L100 | 15 | 8" OC | Low | 100' | \$18.95 |
| TDE1508H100 | 15 | 8" OC | High | 100' | \$18.95 |



TOP QUALITY TAPE LOC FITTINGS



MAKE THE RIGHT CONNECTION

All of these easy-to-install fittings work with most brands of drip tape.



Tape x 1/4" Barb
For attaching tape to mainline tubing. Simply punch a 1/4" hole in the mainline tubing, connect the tape to the tape fitting end, and insert the barbed end into the punched hole. Allows a flow of approx. 80 GPH at 10 PSI.
LSB\$0.59



Tape x 1/4" Barb with Valve
For shutting off individual lines. The 1/4" barb's flow is approx. 80 GPH at 10 PSI.
LSBSO\$2.29



Tape x Female Hose Swivel
For attaching tape to a hose or hose bib or any other male hose threads.
LSF\$1.69



Tape Coupler
For joining two sections of tape or repairing a line.
LSC\$0.89



Tape x 1/2" Male Pipe Thread with Valve
This fitting connects a line of drip tape to 1/2" female pipe threads (FPT). It also has a built-in shutoff valve to allow the line of drip tape to be manually turned off.
LSV12M.....\$2.29



Tape Tee
The Tape Loc Tee will branch a line of drip tape off of an existing line of drip tape. Simply cut the original line of tape and insert the Tape Tee fitting.
LST\$2.19



Tape x PVC Adapter
For running tape directly off a PVC header. Glues onto 1/2" PVC pipe or into a 3/4" PVC fitting.
LSSOC\$0.95



Tape x 1/2" Male Pipe Threads
When teeing off PVC or large poly pipe, use this for a high-flow, removable row beginning. Ideal for long runs.
LS12M\$0.89



Tape x Male Hose Thread
This fitting is used to connect a line of drip tape to female hose threads.
LSM\$0.79



Tape Elbow
For making sharp turns in a garden. Tape will not go around a 90° corner.
LSL\$1.89



Tape x Easy Loc
For attaching tape to the end of 1/2" mainline tubing.
LSELC.....\$1.49



Tape Coupler with Valve
The Tape Coupler with Valve can be used to create a shutoff anywhere in a line of drip tape. It can also be used as a repair coupler to patch two sections of drip tape together.
LSCSO\$2.29



Tape x Male Hose End with Cap
This fitting is used to end a line. The screw-off cap makes it easy to flush lines.
LSMC\$1.19



Tape End Plug
This fitting is used to seal a row of tape. A loop on the end provides a sure grip for easy handling.
LSPLUG\$0.49



Tape Grip Sleeve End
The grip sleeve end is an economical way to end a line of drip tape.
LSGS.....\$3.95/10

VERSATILE SOAKER DRIPLINE

Soaker Dripline is used in all of the garden beds at the DripWorks demonstration garden for row crops, containers, and ornamental plantings.



1/4" SOAKER DRIPLINE

Ideal for small and medium garden beds or containers

- Flexible, easy to use
- Emitters pre-installed every 6", 9", or 12"
- Great for gravity-fed systems, garden beds, containers, and border gardens
- Maximum operating pressure 30 PSI
- Works down to 2 PSI
- Uses standard 1/4" fittings (p. 15)

| Part # | Roll Length | Price Each |
|--------------------|-------------|------------|
| 6" Spacing | | |
| DSD6L | 50' | \$14.95 |
| DSD6 | 100' | \$21.95 |
| DSD6500 | 500' | \$102.95 |
| 9" Spacing | | |
| DSD9 | 100' | \$19.95 |
| DSD9500 | 500' | \$84.95 |
| 12" Spacing | | |
| DSD12 | 100' | \$14.95 |
| DSD12500 | 500' | \$71.95 |

Note: To ensure even flow, we recommend using a regulator with Soaker Dripline. See p. 21 for our 10–30 PSI regulators.

| Soaker Dripline Flow Per 100' | | | | |
|-------------------------------|----------------|------------|--------|--------|
| Spacing | Max Row Length | Flow (GPH) | | |
| | | 10 PSI | 20 PSI | 30 PSI |
| 6" | 18' | 84 | 120 | 160 |
| 9" | 25' | 56 | 80 | 107 |
| 12" | 24' | 42 | 60 | 80 |
| Flow per emitter: | | 0.42 | 0.60 | 0.80 |

To prevent runoff on clay soils, reduce row spacing and water more frequently for shorter durations.

1/4" MICRO-FITTINGS

These fittings are used with all standard 1/4" micro-tubing and Soaker Dripline. They are most frequently inserted into 1/2" and 3/4" mainline tubing using one of our punches.

Control your flow with one of our favorite 1/4" fittings



14VJV



14VFT

Micro-Flow Valves

Make any mini-sprinkler or sprayer adjustable. Also use in place of transfer barbs to control the flow to individual plants. Use barbed valve with 1/4" tubing and Soaker Dripline; threaded valve with Rigid Risers.

| | | |
|----------|----------------|------------|
| 14VJV-5 | Barbed Valve | \$3.49/5 |
| 14VJV-20 | Barbed Valve | \$12.95/20 |
| 14VFT-5 | Threaded Valve | \$3.49/5 |
| 14VFT-20 | Threaded Valve | \$12.95/20 |

Transfer Barb

Our most common connector for attaching 1/4" tubing to mainline (1/2" or 3/4") tubing. Also acts as a coupler for joining two pieces of 1/4" tubing.

| | |
|---------|-----------|
| 14TB-10 | \$1.49/10 |
| 14TB-50 | \$6.95/50 |

Long Transfer Barb

A long body and tapered ends make this 1/4" transfer barb easier to handle than the short barb.

| | |
|----------|-----------|
| 14LTB-10 | \$1.49/10 |
| 14LTB-50 | \$6.29/50 |

Two-Way Goof Plugs *Most popular!*

A plug with two different-sized barbs used to repair small or large holes in mainline tubing. A must if you punch a hole in the wrong place or need to remove an emitter from your mainline tubing.

| | |
|-----------|------------|
| 14GP2-10 | \$0.60/10 |
| 14GP2-100 | \$4.95/100 |

One-Way Goof Plugs

The same size plug as the small end of the 2-way Goof Plug. For patching a hole where a 1/8" or 1/4" barb was removed. Sits flat on the mainline tubing. Use to end a line of 1/4" tubing or Soaker Dripline.

| | |
|-----------|------------|
| 14GP1-10 | \$0.79/10 |
| 14GP1-100 | \$5.95/100 |

Threaded Connector

Thread into mainline tubing to keep short Rigid Risers in an upright position. (10-32 threaded base.)

| | |
|-----------|-----------|
| 14WTTB-10 | \$1.69/10 |
| 14WTTB-50 | \$7.49/50 |

Cross

A four-way fitting for 1/4" tubing.

| | |
|--------|------------|
| 14X-10 | \$3.95/10 |
| 14X-50 | \$17.95/50 |

Elbow

Use anywhere you need tubing to turn a 90° angle.

| | |
|---------|-----------|
| 1490-10 | \$1.95/10 |
| 1490-50 | \$7.95/50 |

Tee

For branching off 1/4" tubing.

| | |
|--------|-----------|
| 14T-10 | \$1.95/10 |
| 14T-50 | \$7.95/50 |

Threaded Barb

Thread by barb connector. Used to connect Rigid Risers to mainline or 1/4" tubing. Can be used to connect 1/4" tubing to PVC. (10-32 threaded base.)

| | |
|-----------|-----------|
| 14WTBC-10 | \$1.95/10 |
| 14WTBC-50 | \$7.49/50 |

Female Hose Thread x 1/4" Fittings

Use these fittings to connect a single line of 1/4" poly tubing to the male hose threads on a faucet, filter, timer, or hose.

| | | |
|-------|--------------------|--------|
| H14CP | With Screen Washer | \$1.95 |
|-------|--------------------|--------|

Bug Plug

When using 1/4" tubing on the outlet side of emitters, a Bug Plug at the end allows water to flow out but keeps bugs from getting in and clogging lines. Not for regulating flow!

| | |
|-------|-------------|
| 14BUG | \$1.29/10 |
| 14BUG | \$10.95/100 |



1/8" MICRO FITTINGS

For installing Spot Spitters. Use a length of 1/8" tubing and a 1/8" transfer barb (18TB) or a reducing transfer barb (14RTB) to connect the emitter to the mainline tubing. Find our Spot Spitters at Dripworks.com.

| | | |
|----------|---------------------------|-----------|
| 18TB-10 | 1/8" Transfer Barb | \$1.49/10 |
| 18TB-50 | 1/8" Transfer Barb | \$6.49/50 |
| 14RTB-10 | 1/4" x 1/8" Transfer Barb | \$2.39/10 |
| 14RTB-50 | 1/4" x 1/8" Transfer Barb | \$9.95/50 |
| 18T-10 | 1/8" Tee | \$1.95/10 |
| 18T-50 | 1/8" Tee | \$8.95/50 |

SPECIALTY HOLE PUNCHES & CUTTERS

The tools you need to easily create holes or make quick work of cutting tubes to length.

BEST SELLER!



Miracle Punch:
"The Ultimate Punch"
This punch works like a staple gun. Slip the 1/2" or 3/4" tubing completely into the channel and squeeze the handle. Makes a big job much easier. Popular with landscapers and commercial growers.
PUM Regular 1/4" Punch . . . \$14.95
PUMK Large Hole Punch* . . . \$14.95
*For larger emitters such as Vibra-Clean, online at Dripworks.com



Purple Handle Punch
This is a punch with a comfortable, ergonomic handle. It is easy to use and makes a clean hole. Use for 1/4" fittings and 5/8" tape fittings. This punch has a hardened steel tip and can be sharpened with a grinding wheel.
PUPUR \$9.95



Tubing Cutter by Hydro-Rain
This tool is for cutting polyethylene tubing up to 1 1/4". Its sharp blade can also cut rubber and plastic pipe!
POLYCUT▲ \$15.95



Orange Handle Punch
Use to make a hole for 1/4" fittings and Tape x 1/4" barb fittings (LSB or LSBO). Use other end to help insert Mini-Jets into 1/4" poly tubing.
PUO \$8.95



Punch N' Cut
Multi-purpose tool will punch a 1/4" hole. Use with any size polyethylene mainline. Cutting tool will cut mainline tubing and PVC schedule 40 up to 1". One tool does it all.
PUPCUT \$15.95



Pocket Punch
Will easily punch holes for 1/4" fittings or emitters into 1/2" mainline tubing. Has a holder to help when installing transfer barbs or certain emitters.
PUPKT \$8.95



Adjustable Punch
Adjustable tubing guide accepts 1/2", 3/4" polyethylene tubing and 1" or 1 1/2" Oval Hose. Includes large tip (PUADJTLG) for making holes slightly larger than standard 1/4" size (LSB, LSBSO, and EL14B fittings). Standard 1/4" tip (PUADJTSM) available at Dripworks.com.
PUADJ* \$22.95
*Adjustable Punch tool may vary in color.

Find the right punch tool for the work you need to do at DRIPWORKS.COM

MICRO TUBING LINE FOR EVERY NEED

Stock up on micro tubing in the sizes and materials you reach for most often. Available in rolls of various lengths and flow rates for all your system requirements. Simply insert fittings and emitters into the end. No clamps needed.



1/8" Polyethylene
(.125" ID—.187" OD)
Flow 15 GPH 30 PSI Max.
18100 100' Roll \$4.95
18500 500' Roll \$24.95
181000 1,000' Roll \$37.95



1/4" Polyethylene
(.170" ID—.250" OD) This is the standard 1/4" tubing used with most emitters, mini-sprinklers, and sprayers.
Flow 30 GPH 30 PSI Max.
1450 50' Roll \$4.95
14100 100' Roll \$6.95
14500 500' Roll \$29.95
141000 1,000' Roll \$49.95



1/4" Vinyl
(.160" ID—.220" OD) Softer and more flexible than polyethylene. Do not use at high pressure. Flow 30 GPH 30 PSI Max.
1450V 50' Roll \$4.95
14100V 100' Roll \$7.95
14500V 500' Roll \$29.95
141000V 1,000' Roll \$49.95



KEEP YOUR SYSTEM IN PLACE

Stakes keep your tubing elevated and hold downs keep it in place.



A. EZ Stake
A clip stake with 3' of heavy-wall vinyl 1/4" tubing and transfer barb attached. Just add a sprayer or mister.
STEZ13 13" EZ Stake \$5.95/5 . . . \$89.95/100
SEZ17 17" EZ Stake \$7.95/5 . . . \$119.95/100

B. Clip Stake
Clip holds Rigid Risers or 1/4" tubing.
ST13 13" Clip Stake \$2.95/5 . . . \$43.95/100
S17 17" Clip Stake \$3.95/5 . . . \$59.95/100

C. Straight Stake
Slender, streamlined stake has a groove to hold 1/4" polyethylene tubing or a Rigid Riser. Not compatible with our 1/4" vinyl tubing.
SA8-5 8" Straight Stake \$2.69/5
SA12-5 12" Straight Stake \$3.29/5
SA16-5 16" Straight Stake \$6.95/5
SA21-5 21" Straight Stake \$7.95/5

D. Stabilizer Stake
Metal stake with loop at top for supporting Rigid Risers.
SS14 14" Stabilizer Stake \$2.95/5 . . . \$45.00/100

E. Rigid Riser
A rigid, thick-walled 1/4" tube for elevating sprayers or mini-sprinklers. Cut to desired length with pruners or a knife. Support with stabilizer, straight or clip stakes. Use with threaded fittings.
SR12 12" Rigid Riser \$0.85/5 . . . \$14.95/100
SR18 18" Rigid Riser \$1.30/5 . . . \$24.95/100

F. 3" Hold Down
A U-shaped stake to keep 1/4" tubing and emitters in place.
SS3-10 \$1.89/10
SS3-100 \$10.95/100

G. U-Shaped Wire Hold Downs
Stronger than the SBHD, these 6" galvanized hold downs work well in light or heavy soils. For 1/2" and 3/4" tubing.
SUHD-10 \$1.89/10
SUHD-100 \$12.95/100

H. 5" Hold Down
A J-shaped stake to keep emitters and 1/4" tubing in place.
SS5-10 \$1.89/10
SS5-100 \$10.95/100

I. J-Shaped Wire Hold Downs
For 1/2" mainline or drip tape, these 7" stakes are easy to use.
SBHD-10 \$1.89/10
SBHD-100 \$12.95/100

J. 6" Support Stake
For 1/4" and 1/8" tubing. Stakes elevate and hold micro-tubing, keep bugs and dirt out of tubing and raise emitters for easy inspection.
SS6-10 \$2.49/10
SS6-50 \$9.95/50



K. Support Clamps With Nails
Plastic clamps with stainless steel nails for attaching 1/4" or 1/2" tubing to wood surfaces.
S14SC-10 Clamps for 1/4" Tubing . . \$1.69/10
S14SC-50 Clamps for 1/4" Tubing . . \$6.95/50
S12SC-10 Clamps for 1/2" Tubing . . \$3.89/10
S12SC-50 Clamps for 1/2" Tubing . . \$14.95/50

GARDEN FILTERS

Screen filters remove sediment and debris that can clog a drip system. These Home Garden Screen Filters are commonly used for small to medium size irrigation systems with a relatively clean water supply.

Browse our full selection of filters at [DRIPWORKS.COM](https://www.drripworks.com)



FILTRATION COMPARISON CHART

| Mesh | Micron | Sand # |
|------|--------|--------|
| 50 | 280 | N/A |
| 100 | 152 | 11 |
| 150 | 104 | 16 |
| 200 | 73 | 20 |

There are two common terms used to rate filtering capability. The first is *mesh*, the number of wires per inch. The second is *micron*, the maximum particle size that can pass through. As mesh size increases, micron size decreases.



A. Irritec Hose Thread Y Filters

These home garden filters attach directly to the male hose threads on a faucet, garden hose or timer. Not rated for use under constant pressure. Must be placed after automated timers or valves. Max pressure is 120 PSI. With Stainless Steel Screen/Drain Valve.

| | | |
|---------|------------------------|---------|
| FYCH | 155 Mesh, 13 GPM. | \$13.95 |
| FYCH200 | 200 Mesh, 13 GPM. | \$13.95 |

B. Male Pipe Thread Y Filter

These home garden filters attach to female pipe threads. Not rated for use under constant pressure. Must be placed after automated timers or valves. Max pressure is 120 PSI. Use drain valve to flush debris from basin. With Stainless Steel Screen/Drain Valve.

| | | |
|-----------|--------------------------------|---------|
| FYCP34155 | 3/4" MPT 155 Mesh, 13 GPM | \$12.95 |
| FYCP34200 | 3/4" MPT 200 Mesh, 13 GPM | \$12.95 |
| FYCP1155 | 1" MPT 155 Mesh, 13 GPM | \$12.95 |
| FYCP1200 | 1" MPT 200 Mesh, 13 GPM | \$12.95 |

C. Tee Filter

Use for smaller systems with clean water (9 GPM or less, up to 80 PSI). FHT swivel inlet x MHT outlet. To clean the stainless steel screen, just remove the hose cap and pull it out.

| | | |
|-------|--------------------------|---------|
| FT | 150 Mesh Tee Filter | \$9.95 |
| FT200 | 200 Mesh Tee Filter | \$10.95 |

Screen replacements available online!



SUPER-SIZED FILTERS

Amiad has a reputation for making some of the best-engineered filters in the world, featuring stainless steel screens and male pipe threads (MPT) on the inlet and outlet. These large filters are designed to handle the constant (static) pressure of being installed before automated timers and valves. Great for debris and sediment.



AMIAD® 2" SUPER "T"

Constant pressure filters with a double-size screen (108 sq. in.) for twice the filtering area.

- Max Flow: 110 GPM
- Max Pressure: 145 PSI

| | | |
|-----------|-------------|----------|
| FAM2ST155 | 155 Mesh... | \$349.95 |
| FAM2ST200 | 200 Mesh... | \$359.95 |

Shop for replacement screens at [DRIPWORKS.COM](https://www.drripworks.com)



STANDARD AMIAD FILTERS

Heavily reinforced frame handles pressures to 140 PSI. Note: Amiad Standard 1" and 1 1/2" use the same size screens.

| Part # | Filter Size (MPT) | Mesh | GPM | Filter Area Sq. In. | Price |
|-----------|-------------------|------|-----|---------------------|----------|
| FAM34 | 3/4" | 155 | 13 | 17 | \$29.95 |
| FAM34200 | 3/4" | 200 | 13 | 17 | \$29.95 |
| FAM1 | 1" | 155 | 30 | 26 | \$79.95 |
| FAM1200 | 1" | 200 | 30 | 26 | \$79.95 |
| FAM112 | 1 1/2" | 155 | 66 | 26 | \$104.95 |
| FAM112200 | 1 1/2" | 200 | 66 | 26 | \$104.95 |
| FAM112SU | 1 1/2" | 155 | 66 | 52 | \$149.95 |
| FAM112SU2 | 1 1/2" | 200 | 66 | 52 | \$149.95 |



AMIAD TAGLINE FILTERS

Lower-cost alternative can handle pressures to 110 PSI. Note: 3/4" and 1" Amiad Tagline Filters both use 3/4" Amiad Screens. 1 1/2" Amiad Tagline Filters use 1 1/2" Amiad Super Screens.

| Part # | Filter Size (MPT) | Mesh | GPM | Filter Area Sq. In. | Price |
|-------------|-------------------|------|-----|---------------------|----------|
| FAMCP34 | 3/4" | 155 | 13 | 17 | \$19.95 |
| FAMCP34200 | 3/4" | 200 | 13 | 17 | \$19.95 |
| FAMCP1 | 1" | 200 | 22 | 17 | \$25.95 |
| FAMCP112 | 1 1/2" | 155 | 66 | 52 | \$89.95 |
| FAMCP112200 | 1 1/2" | 200 | 66 | 52 | \$89.95 |
| FAMCP2155 | 2" | 155 | 110 | 72 | \$179.95 |
| FAMCP2200 | 2" | 200 | 110 | 72 | \$179.95 |



ARKAL DISC FILTERS

One of the finest disc filters on the market. If you have organic matter such as algae in your water supply (pond, creek, lake, river), this is the answer! The stacked discs in the Arkal filter are more durable and easier to clean than screens or cartridges. Discs must be removed from the filter body for cleaning. Maximum pressure is 140 PSI. Not for sediment.

| Part # | Filter Size (MPT) | Mesh | GPM | Filter Area Sq. In. | Price |
|----------|-------------------|------|-----|---------------------|----------|
| FA34 | 3/4" | 140 | 12 | 24.8 | \$34.95 |
| FA1 | 1" | 140 | 26 | 48.9 | \$99.95 |
| FA1200 | 1" | 200 | 26 | 48.9 | \$99.95 |
| FA112140 | 1 1/2" | 140 | 35 | 48.9 | \$156.99 |
| FA112200 | 1 1/2" | 200 | 35 | 48.9 | \$156.99 |

The 3/4" Arkal is not available in 200 Mesh.



ARKAL 2" DUAL LITE DISC FILTERS

Substantially larger than any of our other screen or disc filters. The filtering area is almost twice as large as the Arkal 1 1/2" filter. Not for sediment.

- Max Pressure: 116 PSI
- Length: 16 5/16" Width: 10 1/4"
- Weight: 6.6 lb.
- Distance between inlet and outlet: 10 1/4"

| Part # | Filter Size (MPT) | Mesh | GPM | Filter Area Sq. In. | Price |
|----------|-------------------|------|-----|---------------------|----------|
| FADL2140 | 2" | 140 | 110 | 147 | \$295.95 |
| FADL2200 | 2" | 200 | 110 | 147 | \$295.95 |



ARKAL SUPER DISC FILTERS

Designed for larger drip systems or where the water has more algae or other organic debris. The disc set is almost twice the size of a standard Arkal filter, providing a much larger filtering capacity and a higher flow. Maximum pressure 140 PSI. Not for sediment.

| Part # | Filter Size (MPT) | Mesh | GPM | Filter Area Sq. In. | Price |
|------------|-------------------|------|-----|---------------------|----------|
| FA1140SUP | 1" | 140 | 35 | 86.5 | \$149.95 |
| FA1200SUP | 1" | 200 | 35 | 86.5 | \$149.95 |
| FA112140SU | 1 1/2" | 140 | 52 | 86.5 | \$199.95 |
| FA112200SU | 1 1/2" | 200 | 52 | 86.5 | \$199.95 |



SPIN CLEAN FILTERS

An essential component of an irrigation system. The unique design effectively keeps debris moving across the screen element toward the basin, where it is collected. Ideal for removing heavy debris like sand. Note: Filter must be placed horizontally into the line. Maximum pressure 150 PSI. Small Spin Clean filter sizes available online at Dripworks.com.

| Part # | Filter Size (MPT) | Mesh | GPM | Filter Area Sq. In. | Price |
|--------|-------------------|------|-----|---------------------|----------|
| FSC112 | 1 1/2" | 150 | 55 | 60.8 | \$369.95 |
| FSC2 | 2" | 150 | 120 | 60.8 | \$389.95 |



PRESSURE REGULATORS

A regulator reduces incoming water pressure (PSI) that is too high for drip systems. Regulators (except the Senninger Limit Valve and Olson Static Regulator) must be placed downstream of valves or timers to prevent damage from constant pressure.

BEST SELLER!



Senninger Garden Regulators

Our best-selling regulator. It is ideal for low-volume drip systems. Impact-resistant body (3 1/2" long). FHT x MHT for use with Tee filters, Inline filters or Hose Threaded Y filters. Flow range is 0.5–7 GPM.

| | | |
|--------|--------------|--------|
| PRSG10 | 10 PSI, 90* | \$8.95 |
| PRSG20 | 20 PSI, 100* | \$8.95 |
| PRSG30 | 30 PSI, 110* | \$8.95 |
| PRSG40 | 40 PSI, 120* | \$8.95 |

LOW FLOW (0.5-8 GPM)



Hose Thread x Hose Thread

FHT x MHT for use with Tee filters, Inline filters or Hose threaded Y filters (p. 18).

| | | |
|----------|--------------|---------|
| PRSLHH12 | 12 PSI, 90* | \$12.95 |
| PRSLHH20 | 20 PSI, 100* | \$12.95 |
| PRSLHH30 | 30 PSI, 110* | \$12.95 |



Pipe Thread x Hose Thread

3/4" FPT x MHT for use with pipe threaded Y filters.

| | | |
|----------|-------------|---------|
| PRSLPH12 | 12 PSI, 90* | \$12.95 |
|----------|-------------|---------|



Pipe Thread x Pipe Thread

3/4" FPT x 3/4" FPT for use with pipe threaded Y filters.

| | | |
|------|--------------|---------|
| PR12 | 12 PSI, 90* | \$11.95 |
| PR20 | 20 PSI, 100* | \$11.95 |

HIGH FLOW (10-32 GPM)



Pipe Thread x Pipe Thread

1 1/4" FPT x 1" FPT

| | | |
|--------|--------------|---------|
| PRSH10 | 10 PSI, 90* | \$29.95 |
| PRSH30 | 30 PSI, 110* | \$29.95 |

Click to chat about choosing the right regulator at DRIPWORKS.COM

MEDIUM FLOW (2-20 GPM)



Pipe Thread x Pipe Thread

3/4" FPT x 3/4" FPT

| | | |
|----------|--------------|---------|
| PRSMPP12 | 12 PSI, 90* | \$14.95 |
| PRSMPP20 | 20 PSI, 100* | \$14.95 |
| PRSMPP30 | 30 PSI, 110* | \$14.95 |
| PRSMPP40 | 40 PSI, 120* | \$14.95 |



Pipe Thread x Hose Thread

3/4" FPT x MHT

| | | |
|----------|--------------|---------|
| PRSMPH12 | 12 PSI, 90* | \$14.95 |
| PRSMPH30 | 30 PSI, 110* | \$14.95 |



Pipe Thread x Pipe Thread

1" FPT x 1" FPT

| | | |
|--------|--------------|---------|
| PR1S12 | 12 PSI, 90* | \$15.95 |
| PR1S25 | 25 PSI, 105* | \$15.95 |
| PR1S40 | 40 PSI, 120* | \$15.95 |

CONSTANT PRESSURE



Olson Static Regulators

The only hose threaded static regulator we carry! A low cost, compact, constant pressure regulator. Just 2 1/2" long. Maximum inlet pressure is 100 PSI. Flow range of 0.5–7 GPM. FHT x MHT. Can be installed before valves and timers. Use with Tee filter, Inline filter, or Hose Thread Y filters.

| | | |
|--------|--------|---------|
| PROH10 | 10 PSI | \$10.95 |
| PROH25 | 25 PSI | \$10.95 |



Senninger Limit Valves

Use these constant pressure regulators before timers, valves, and shutoffs to reduce line pressure and extend the life of the system. Maximum inlet pressure is 125 PSI. Flow range is 0.5–18 GPM. FPT x FPT.

| | | |
|---------|--------------|---------|
| PRLV10 | 10 PSI, 3/4" | \$21.95 |
| PRLV20 | 20 PSI, 3/4" | \$21.95 |
| PRLV30 | 30 PSI, 3/4" | \$21.95 |
| PRLV40 | 40 PSI, 3/4" | \$21.95 |
| PR1LV30 | 30 PSI, 1" | \$24.95 |

Note: When system is not operating, a 30 PSI Limit Valve will allow up to 45 PSI in the system.

When it's time to replace your filter disc, find yours at DRIPWORKS.COM

FPT = Female Pipe Threads, FHT = Female Hose Threads, MPT = Male Pipe Threads, MHT = Male Hose Threads
*Amount of incoming static pressure the regulator can handle.

EXTENSION HOSES, SHUTOFFS, SPLITTERS, AND QUICK CONNECTS

Customize your drip irrigation system with high quality accessories.



High Pressure Extension Hose
When a valve assembly is so large that it stresses a hose bib, lower it to the ground with a high-pressure extension hose. Designed for constant pressure. FHT x MHT brass ends. Maximum operating pressure of 150 PSI.
HPEX3▲ 3' Extension Hose\$14.95
HPEX5▲ 5' Extension Hose\$17.95



Hose Saver – Timer Saver
Protect your timer by installing this 8" high-pressure hose between your faucet and timer. Designed for constant pressure.
HPSAV▲\$10.95



Hose Shutoff
This hose thread manual shutoff is very handy to have at the end of a hose.
HSO Plastic\$1.79
HSOBR▲ Brass with Swivel.....\$6.95



Faucet Angle Adapters with Swivels
Use these fittings to adapt a faucet that is too low to the ground or to change the angle of a hose bib. All have standard hose ends.
HFAA90▲ PVC 90° Adapter\$4.95
HFAVBR▲ Brass 45° Adapter with Shutoff\$7.49
HFAA▲ PVC 45° Adapter\$7.95



3-Way PVC Splitter
A ¾" PVC splitter with brass swivel made by DripWorks for use with multiple timers. Use with hose extension above.
HSPL3▲ 3-Way Splitter\$14.95
HSPL3SO▲ 3-Way Splitter with 3 HSO Shutoffs.....\$19.95



½" FPT x Male Hose Elbow (with Shutoff)
To start a drip system; attach a hose threaded filter (p. 18), then a female hose start (ELFH, p. 11).
RLSO▲\$3.79



Female Hose Plug
Protect your drip system from dirt and bugs when it is disconnected from the water source.
HPLUG▲\$1.49
Brass 4-Way Splitter
A heavy duty brass splitter with built-in valves and hose swivel. Use with hose extension on left.
HSPL4B▲\$24.95



Hose Y with Valves
Run two drip systems (with or without timers) from one faucet or leave one outlet available for a garden hose.
HYV Plastic\$2.49
HYVBR▲ Brass with Swivel.....\$10.95
HYVHI▲ Brass Full Port Hose Y with Swivel\$21.95



High-Flow Hose Fittings
Heavy-duty, full-port hose fittings allow for a higher flow at a lower price than the brass above. These have easy-to-grip shutoff handles and female swivel inlets.
HSOHPL Hose Shutoff (Plastic).....\$6.95
HSOAL▲ Hose Shutoff (Aluminum).....\$10.95
HYVHPL Hose Y (Plastic)\$8.95
HYVAL▲ Hose Y (Aluminum)....\$13.95

Browse even more fittings online at DRIPWORKS.COM

EASY CONVERSION: SPRINKLER TO DRIP SYSTEM FITTINGS

The fittings below have ½" FPT inlets to convert lawn sprinkler risers to a drip system.



Male Hose x ½" Female Pipe
This versatile fitting has standard male hose threads (MHT) on one end and ¾" male pipe threads (MPT) on the other end. Inside the ¾" MPT end are ½" female pipe threads (FPT).
AMH12FP\$0.89

FIND THE RIGHT ASSEMBLY FOR THE JOB

When attaching fittings to your faucet to start your drip system, the order of assembly is important. Adapters may be used to connect pipe threaded components to hose threads. Use a high pressure hose extension when connecting the assembly to the faucet. Timers should not rest directly on the ground.



Seeing is understanding: browse our assembly diagrams at DRIPWORKS.COM

MAKE THE RIGHT CONNECTION WITH HOSE TO PIPE ADAPTERS

Not all components in a system have the same type and size of threads. Use these fittings to connect unlike threads. Add thread sealant tape on pipe-threaded connections to prevent leaks. Note: Hose threads are always uniform in size.



Female Hose x ¾" Female Pipe
AFHFP▲ Dura PVC Swivel.....\$2.39
AFHFPBS▲ Brass Swivel.....\$4.49



Male Hose x ¾" Male Pipe
AMHMP▲ Polypropylene\$0.59
AMHMPB▲ Solid Brass\$3.95



Female Hose x ¾" Male Pipe
AFHMP▲ Dura PVC Swivel.....\$2.39
AFHMPB▲ Solid Brass\$3.95



Female Hose x Female Hose
AFHFH▲ Dura PVC Swivel.....\$2.39
AFHFHBS▲ Brass Swivel.....\$4.49



Male Hose x Male Hose
AMHMH▲ Plastic\$0.94
AMHMHBS▲ Solid Brass\$3.95



Male Hose x ¾" Female Pipe
AFPMH▲ PVC\$1.79
AFPMHBS▲ Solid Brass\$3.95



PVC Glue-In x Hose End
We carry both female and male hose ends for PVC pipe. AFHI and AMHI fittings will glue onto ½" PVC pipe or into ¾" PVC slip fittings (see pp. 46–47).
AFHI Female Hose Swivel ..\$1.69
AMHI Male Hose\$1.29
AMHI12* ½" x Male Hose\$0.95
*Glues into ½" PVC fitting.

STURDY BARB FITTINGS

Strong hold for higher pressure systems.

Don't see what you need?
Head to **DRIPWORKS.COM**

EFFECTIVE DRIP EMITTERS

Low pressure? Uneven plant spacing? Dirty water? Check out these low-cost, non-pressure compensating emitters. We recommend using a 20 PSI pressure regulator or lower (p. 21) with these emitters.



| Female Hose Start (Swivel) | | |
|----------------------------|------|--------|
| Part # | Size | Price |
| BFHDURA▲ | ½" | \$2.95 |
| BFH34DURA▲ | ¾" | \$2.95 |
| BFH1▲ | 1" | \$2.95 |



| Male Hose | | |
|-----------|------|--------|
| Part # | Size | Price |
| BMH▲ | ½" | \$1.89 |
| BMH34▲ | ¾" | \$2.09 |
| BMH1▲ | 1" | \$2.39 |



| Coupler | | |
|-----------|------|--------|
| Part # | Size | Price |
| BCDURA▲ | ½" | \$0.72 |
| BC34DURA▲ | ¾" | \$0.89 |
| BC1▲ | 1" | \$0.89 |



| Reducing Coupler | | |
|------------------|---------|--------|
| Part # | Size | Price |
| BRC3412▲ | ¾" x ½" | \$1.19 |
| BRC112▲ | 1" x ½" | \$1.69 |
| BRC134▲ | 1" x ¾" | \$1.39 |

Hose threads are always the same size. These fittings are made of schedule 40 PVC plastic and may vary in color.



| Tee | | |
|-----------|------|--------|
| Part # | Size | Price |
| BTDURA▲ | ½" | \$1.49 |
| BT34DURA▲ | ¾" | \$1.69 |
| BT1▲ | 1" | \$2.19 |



| Reducing Tee | | |
|--------------|----------|--------|
| Part # | Size | Price |
| BRT3412▲ | ¾" x ½" | \$1.95 |
| BRT134▲ | 1" x ¾" | \$2.29 |
| BRT112▲ | 1" x ½" | \$2.29 |
| BRT11212▲ | 1½" x ½" | \$4.95 |
| BRT1121▲ | 1½" x 1" | \$4.95 |



| Elbows | | |
|-----------|------|--------|
| Part # | Size | Price |
| BLDURA▲ | ½" | \$1.49 |
| BL34DURA▲ | ¾" | \$1.85 |
| BL1▲ | 1" | \$1.95 |



| Plug | | |
|--------|------|--------|
| Part # | Size | Price |
| BP▲ | ½" | \$1.29 |
| BP34▲ | ¾" | \$1.39 |
| BP1▲ | 1" | \$1.89 |



| Female Pipe | | |
|-------------|------|--------|
| Part # | Size | Price |
| BFP12▲ | ½" | \$3.49 |
| BFP34▲ | ¾" | \$3.49 |
| BFP1▲ | 1" | \$3.95 |

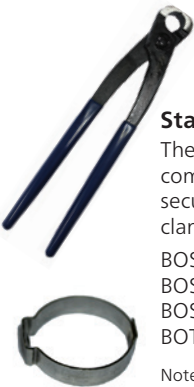


| Male Pipe | | |
|-----------|------|--------|
| Part # | Size | Price |
| BMP12▲ | ½" | \$0.79 |
| BMP34▲ | ¾" | \$0.89 |
| BMP1▲ | 1" | \$0.89 |



| Barbed Valves* | | | |
|----------------|------|----------|--------|
| Part # | Size | Tubin ID | Price |
| BVA▲ | ½" | .600" | \$2.59 |
| BVA34▲ | ¾" | .820" | \$3.95 |
| BVA1▲ | 1" | -- | \$5.49 |

*These Valves are not PVC.



Stainless Steel Crimping Clamps

These gap-free clamps are an inexpensive solution for commercial and industrial applications. They are easy to install, secure to 100 PSI, and will not loosen up over time. Crimping clamps must be cut off for removal. They are not reusable.

| | | | |
|--------|--------------------------|------------------|-------------|
| BOSS12 | Clamp for ½" Drip Tubing | .. \$2.80/10.. | \$20.00/100 |
| BOSS34 | Clamp for ¾" Drip Tubing | .. \$3.20/10.. | \$25.00/100 |
| BOSS1 | Clamp for 1" Oval Hose | \$3.50/10.. | \$28.00/100 |
| BOTOOL | Crimping Tool | | \$27.95 |

Note: Will not fit on thicker-walled, high-density poly pipe (HDPE). Install with the Crimping Tool (BOTOOL).



Stainless Steel Tubing Clamps

American, high quality stainless steel clamps with stainless bands and gears. Stronger and longer-lasting than standard imports with just stainless bands. Use on barbed fittings when pressure is more than 20 PSI.

| | | | |
|--------|-------------------------|-------|------------|
| BSHC12 | ½" Clamp Size #8 | | \$15.95/10 |
| BSHC | ½" or ¾" Clamp Size #12 | .. | \$16.95/10 |
| BSHC1 | 1" Clamp Size #16 | | \$16.95/10 |

GROWER'S CHOICE



Great for
Compost Tea!

NON-PLUGGING
EMITTER

If your water supply is very dirty (pond or irrigation ditch) and fine screen filters clog quickly, this is the answer. First use a coarse, 30–50 mesh screen filter to capture large particles. Then use these Non-Plugging Emitters, which pass particles that would plug up most other emitters. A minimum of 15 PSI is required for these emitters to work properly. Not an inline emitter. Use at the end of ¼" tubing or install directly into mainline. Flow at 20 PSI.

| | | |
|------|------------|--------------------------|
| DNP1 | 1 GPH..... | \$8.95/10 .. \$79.95/100 |
|------|------------|--------------------------|



POT DRIPPER

This is a basic container dripper with a 2" hold down stake and a threaded inlet. Note: A ¼" Transfer Barb (14TB, p. 15) and ¼" tubing are needed to connect this emitter to the mainline. Pot Drippers may also be used with ⅛" tubing and fittings (pp. 15,16). Flow at 15 PSI.

| | | |
|--------|--------------------|--------------------------|
| DPOT12 | ½ GPH (red)..... | \$3.95/10 .. \$31.95/100 |
| DPOT1 | 1 GPH (black)..... | \$3.95/10 .. \$31.95/100 |



INLINE EMITTER

Use with ¼" tubing to make your own inline emitter tubing. Can also be added into existing ¼" lines at any time. Perfect for unevenly spaced plants. For larger plants, just add more emitters. To use, cut tubing where you want an emitter and insert the barbed ends. Use a goof plug (p. 15) to end the line. Flow at 15 PSI.

| | | |
|------------|--------------------|------------|
| DTMIL12-10 | ½ GPH (red)..... | \$2.95/10 |
| DTMIL12-50 | ½ GPH (red)..... | \$11.95/50 |
| DTMIL1-10 | 1 GPH (black)..... | \$2.95/10 |
| DTMIL1-50 | 1 GPH (black)..... | \$11.95/50 |
| DTMIL2-10 | 2 GPH (green)..... | \$2.95/10 |
| DTMIL2-50 | 2 GPH (green)..... | \$11.95/50 |

Note: ¼" tubing has a maximum flow of about 30 GPH. Do not put too many emitters on any ¼" line.



TAKE-APART
EMITTER

Take-Apart Emitters have a locking cap that can be removed for cleaning. The beveled barb end is the inlet and the flag end is the outlet. These emitters are great for low-pressure systems. Works down to 4 PSI. Flow at 15 PSI.

| | | |
|----------|--------------------|-------------|
| DTA1-10 | 1 GPH (black)..... | \$2.49/10 |
| DTA1-50 | 1 GPH (black)..... | \$10.95/50 |
| DTA1-100 | 1 GPH (black)..... | \$19.95/100 |
| DTA2-10 | 2 GPH (blue)..... | \$2.49/10 |
| DTA2-50 | 2 GPH (blue)..... | \$10.95/50 |
| DTA2-100 | 2 GPH (blue)..... | \$19.95/100 |
| DTA4-10 | 4 GPH (green)..... | \$2.49/10 |
| DTA4-50 | 4 GPH (green)..... | \$10.95/50 |
| DTA4-100 | 4 GPH (green)..... | \$19.95/100 |

Note: The flag end is the outlet.

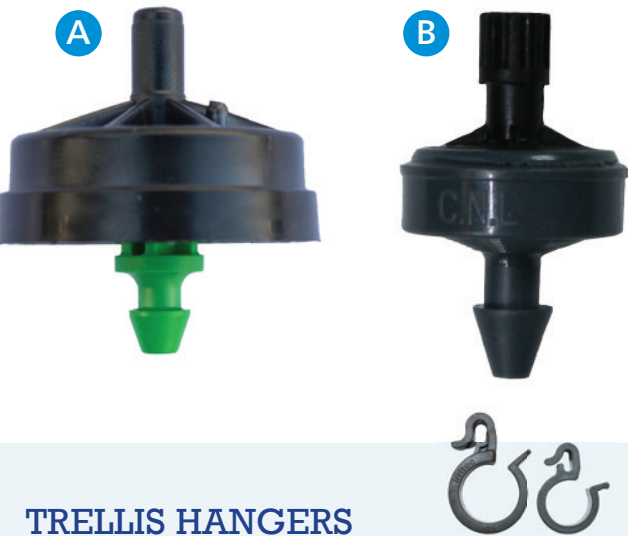
PRECISE WATERING



Pressure compensating emitters are ideal for achieving even water distribution when your drip irrigation system runs extensive distances such as planting in long rows or when you're dealing with uneven or hilly terrain.



THE PRODUCT OF CHOICE IN THE RUGGED VINEYARDS OF NORTHERN CALIFORNIA



TRELLIS HANGERS

UV-resistant plastic hangers used to suspend 1/2" or 3/4" tubing on trellis wire. Used in vineyards, orchards, and greenhouses.

| | | | |
|--------|------|-----------|-------------|
| STRE | 1/2" | \$1.20/10 | \$11.00/100 |
| STRE34 | 3/4" | \$3.90/10 | \$29.00/100 |

BEST SELLER!

| | | | |
|--|----------------|---------------|-------------|
| A. Woodpecker PC | | | |
| The heavy-duty PC emitter! The rubber diaphragm is the largest available and the least likely to plug. 1/4" inlet and outlet. Pressure range of 15-50 PSI. | | | |
| DNPC12-25 | 1/2 GPH (red) | | \$15.95/25 |
| DNPC12-100 | 1/2 GPH (red) | | \$54.95/100 |
| DNPC1-25 | 1 GPH (black) | | \$15.95/2 |
| DNPC1-100 | 1 GPH (black) | | \$54.95/100 |
| DNPC2-25 | 2 GPH (green) | | \$15.95/25 |
| DNPC2-100 | 2 GPH (green) | | \$54.95/100 |
| DNPC6-25 | 6 GPH (orange) | | \$15.95/25 |
| DNPC6-100 | 6 GPH (orange) | | \$54.95/100 |
| DNPBUG | Bug Cap | | \$2.89/10 |
| | | (allows flow) | \$24.95/100 |
| DNPCAP | Shutoff Cap | | \$3.95/10 |
| | | | \$29.95/100 |

| | | | |
|--|---------------|-------|-------------|
| B. Woodpecker Jr. PC | | | |
| A versatile emitter for landscapes, greenhouses, orchards, and backyard gardens. One unique feature is that it won't begin to emit water until the entire system reaches 7 pounds of pressure (PSI). This is great for greenhouses where even watering is necessary or hillside plantings at different elevations. 1/4" inlet and outlet. Pressure range of 10-50 PSI. | | | |
| DNJR12-25 | 1/2 GPH (red) | | \$11.95/25 |
| DNJR12-100 | 1/2 GPH (red) | | \$42.95/100 |
| DNJR1-25 | 1 GPH (gray) | | \$11.95/25 |
| DNJR1-100 | 1 GPH (gray) | | \$42.95/100 |
| DNJR2-25 | 2 GPH (green) | | \$11.95/25 |
| DNJR2-100 | 2 GPH (green) | | \$42.95/100 |

COBRA STAKE DRIP EMITTERS

A landscape spike dripper that delivers precise amounts of water directly to the root zone. Requires a length of 1/4" tubing and a transfer barb (p. 15) to connect emitter to mainline tubing. Used in nurseries, root stock, and landscape applications. Self flushing, use as a PC pot dripper. Stake length of 5 inches. Pressure range of 15-45 PSI.

| | | | |
|------------|---------------|-------|-------------|
| DCOB12-5 | 1/2 GPH (red) | | \$3.49/5 |
| DCOB12-100 | 1/2 GPH (red) | | \$49.95/100 |
| DCOB1-5 | 1 GPH (black) | | \$3.49/5 |
| DCOB1-100 | 1 GPH (black) | | \$49.95/100 |
| DCOB2-5 | 2 GPH (green) | | \$3.49/5 |
| DCOB2-100 | 2 GPH (green) | | \$49.95/100 |

CETA PC EMITTERS ON A STAKE

Available for either inline or end of line installation. Take apart for easy cleaning. Pressure range of 10-50 PSI.

| | | | |
|-----------|-------------------|-------|-------------|
| DCSTK-10 | 1 GPH End of Line | .. | \$8.95/10 |
| DCSTK-100 | 1 GPH End of Line | .. | \$75.95/100 |
| DCIL-10 | 1 GPH Inline | | \$8.95/10 |
| DCIL-100 | 1 GPH Inline | | \$75.95/100 |

PINCH DRIP EMITTERS

This self flushing emitter lies almost flat on the mainline tubing so it is not easily damaged. Designed for easy finger/thumb installation. 1/4" barbed inlet and 1/4" nipple outlet. Pressure range of 15-45 PSI.

| | | | |
|------------|---------------|-------|-------------|
| DPCH12-10 | 1/2 GPH (red) | | \$3.79/10 |
| DPCH12-100 | 1/2 GPH (red) | | \$27.95/100 |
| DPCH1-10 | 1 GPH (black) | | \$3.79/10 |
| DPCH1-100 | 1 GPH (black) | | \$27.95/100 |
| DPCH2-10 | 2 GPH (green) | | \$3.79/10 |
| DPCH2-100 | 2 GPH (green) | | \$27.95/100 |

CETA PC EMITTERS

These self flushing PC emitters have a 1/4" barb on both inlet and outlet. Take apart for easy cleaning. Pressure range of 15-45 PSI.

| | | | |
|------------|---------------|-------|-------------|
| DC12PC-10 | 1/2 GPH (red) | | \$3.95/10 |
| DC12PC-100 | 1/2 GPH (red) | | \$32.95/100 |
| DC1PC-10 | 1 GPH (black) | | \$3.95/10 |
| DC1PC-100 | 1 GPH (black) | | \$32.95/100 |
| DC2PC-10 | 2 GPH (green) | | \$3.95/10 |
| DC2PC-100 | 2 GPH (green) | | \$32.95/100 |

What's the best emitter for your needs?
Find out at DRIPWORKS.COM

JOIN OUR COMMUNITY

You're invited to follow us on Facebook, YouTube, Instagram, and Pinterest. In addition to enjoying exclusive offers, it's a great way to share how you used DripWorks products to complete your farm or garden project and to check out what other community members are doing. We are only satisfied when you are successful.

@DripWorksUSA    



1

CHAT WITH
LIVE REPS

We're here to answer your questions and point you to the right place on our website. Just click to chat.

2

GALLERY
OF PLANS

Take the guesswork out of what you need to complete your project! Browse our customizable, detailed plans.

3

ONLINE
CALCULATORS

Our online calculators make it easy to plan out your system from start to finish.

LET'S GET YOU WHAT YOU NEED.

We've got easy ways to order, quick ways to ship, and no-hassle returns.

FOUR EASY WAYS TO ORDER

- 1. **ONLINE** at Dripworks.com
- 2. **CALL** us toll free at 800.522.3747

March–June 30
Mon.–Fri. 7 am–5 pm PST
Closed Sat. and Sun.

July–Feb 28
Mon.–Fri. 8 am–4 pm PST
Closed Sat. and Sun.
- 3. **FAX** 707.459.9645
- 4. **VISIT** our retail store and demo garden
190 Sanhedrin Circle, Willits, CA 95490
Store hours Mon.–Fri. 9 am–4 pm PST

SHIPPING & DELIVERY

We typically ship orders within 24 hours. We will notify you if an item is back-ordered.

Shipping Options:

- 1. **Ground Delivery Service**
Standard delivery time varies by region and time for delivery does not include weekend days. For shipping rates, go to Dripworks.com
- 2. **Next Day Delivery**
Call By 1 pm Pacific Time. We offer Next Day, 2nd Day, and 3-Day Select. Call for rates. Expedited rates will be calculated for online orders.
- 3. **U.S. Priority Mail**
Standard method for small shipments under 3 pounds is Priority Mail at \$9.00 flat rate. Small orders of 0.4 pounds or less are shipped via First Class. AK, HI, PR, VI, and Canada orders shipped via USPS. There is a \$10.00 handling fee for orders to Canada.

RETURNS

DripWorks 30-Day Money Back Guarantee

Not happy with your item for any reason? Items may be returned or exchanged as follows (reimbursement does not include original shipping and handling charges):

- Returns within 30 days:** All items must be in their original packaging. Return shipping is the responsibility of the purchaser. Please inspect your entire order within 48 hours upon delivery and call us with any questions at 800.522.3747.
- Returns from 31-60 days:** New, unused, unopened items in their original packaging will be charged a 20% restocking fee.
- Returns from 61-90 days:** New, unused, unopened items in their original packaging will be charged a 30% restocking fee.
- Returns after 90 days:** Unfortunately, we cannot refund or exchange items after 90 days.

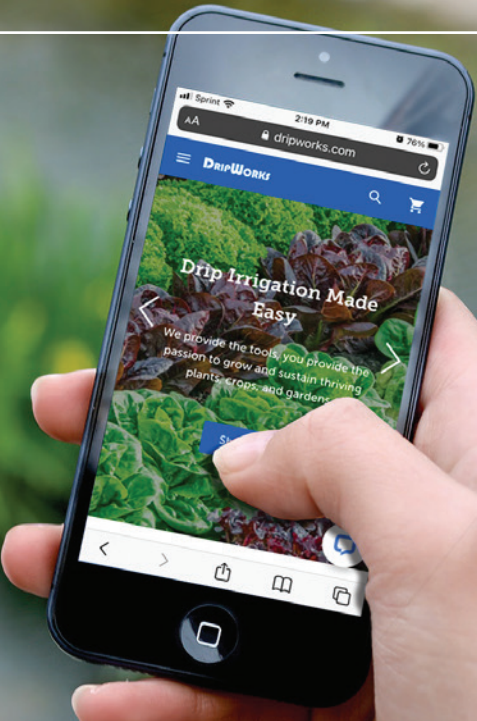
For information on our return policies regarding Special or Custom orders, kits, drop-shipped items, defective items, or undeliverable/unclaimed packages, please visit: [Dripworks.com/returns](https://dripworks.com/returns) for details.

For instructions on returning or exchanging your item(s), please visit: [Dripworks.com/returns](https://dripworks.com/returns).

OUR WEBSITE
IS SO MUCH
MORE THAN
A STORE.

You can connect with live experts, check out how-to videos, calculate every aspect of your plan, and find the answers you need all in one place.

[Dripworks.com](https://dripworks.com)



4

GARDEN
PLANNING GUIDE

Discover the optimum planting times for your region and experiment online with different garden layouts.

5

HOW-TO
VIDEOS

Browse over 175 videos on our website and our YouTube channel for how-to's, inspiration, and more.

6

DRIP PLANNING
GUIDE

Learn about everything you need to plan and execute a successful system in this comprehensive guide.

General Email: support@Dripworks.com
Returns: returns@Dripworks.com

HIGH VOLUME WATERING

When a larger amount of water is necessary for fast-growing, thirsty plants, or a big flower garden or ground cover, these sprayers will emit a higher amount of water than drippers.



Explore our video library to see these products in action at [DRIPWORKS.COM](https://www.dripworks.com)



MICRO-JETS

Easy-to-adjust valves with your choice of spray patterns make Micro-Jets a smart choice for watering perennials, ground covers, small trees, and shrubs. For quick installation, use EZ Stakes (p. 17).

- Maximum flow of 22 gallons per hour (GPH) at 30 PSI
- Radius of 7'-8' at 30 PSI for all Micro-Jets
- 10-32 threaded base
- Jets can be shut off individually
- Quarter and half circle patterns deliver a fan spray; full circle delivers fingers of water (see photos at left)
- Pressure range 15-45 PSI



| Part # | Color | Pattern | Quantity | Price |
|-----------|-------|----------------|----------|---------|
| MAJ90-5 | Black | Quarter Circle | 5 | \$4.95 |
| MAJ90-50 | Black | | 50 | \$39.95 |
| MAJ180-5 | Blue | Half Circle | 5 | \$4.95 |
| MAJ180-50 | Blue | | 50 | \$39.95 |
| MAJ360-5 | Red | Full Circle | 5 | \$4.95 |
| MAJ360-50 | Red | | 50 | \$39.95 |



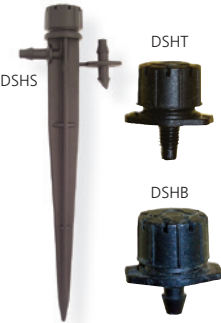
PRESSURE COMPENSATING SHRUBBLERS

Gentle flow action with uniform coverage for all emitters on the same supply line. Considered partially pressure compensating, as there is some variation due to pressure. See chart below.

- Pre-set flow rate
- Take apart for easy cleaning
- Colored cap for identification
- Pressure range 15-45 PSI

| | | |
|------------|-------------|-------------|
| DSHPCB-5 | Barbed Base | \$3.29/5 |
| DSHPCB-100 | Barbed Base | \$49.95/100 |
| DSHPCS-5 | 5" Stake | \$5.49/5 |
| DSHPCS-100 | 5" Stake | \$98.95/100 |

| Flow Chart | | |
|------------|--------------|----------|
| Pressure | Maximum Flow | Diameter |
| 15 PSI | 6.6 GPH | 7" |
| 20 PSI | 7.5 GPH | 8" |
| 30 PSI | 8.1 GPH | 12" |
| 40 PSI | 9.3 GPH | 14" |



SHRUBBLERS®

Emit eight fingers of water that can be easily adjusted from a basic drip to a 24" diameter circle. Ideal for pots, tubs, landscaped gardens, nurseries, hanging baskets, planter boxes and more.

- Fully adjustable from 0-13 gallons per hour (GPH)
- Turn cap to adjust flow or shut off completely
- Rated up to 30 PSI

| | | |
|-------------|--|-------------|
| DSHS-5 | Full Circle on 5" Stake with break-off transfer barb | \$3.79/5 |
| DSHS-100 | Full Circle on 5" Stake with break-off transfer barb | \$64.95/100 |
| DSHS180-5 | Half Circle on 5" Stake with break-off transfer barb | \$3.79/5 |
| DSHS180-100 | Half Circle on 5" Stake with break-off transfer barb | \$64.95/100 |
| DSHT-5 | Full Circle on 10-32 Threaded Base | \$2.95/5 |
| DSHT-100 | Full Circle on 10-32 Threaded Base | \$44.95/100 |
| DSHB-5 | Full Circle on 1/4" Barb Base | \$2.95/5 |
| DSHB-100 | Full Circle on 1/4" Barb Base | \$42.95/100 |

| Flow Chart | |
|------------------------|----------|
| Gallons Per Hour (GPH) | Diameter |
| 5.8 | 6" |
| 8.7 | 12" |
| 13 | 24" |



POTSTREAM™ ADJUSTABLE FLOW

The PotStream is a side-mounted adjustable sprayer. It features a gentle stream pattern that minimizes soil erosion, and the adjustable spray allows for watering of different-sized containers and pots.

- Pressure range: 5-40 PSI
- Low application rate and gentle stream pattern
- Can be taken apart for easy cleaning

| | |
|---------|-------------|
| DPS-5 | \$5.95/5 |
| DPS-25 | \$22.95/25 |
| DPS-100 | \$79.95/100 |

| Flow Chart | | |
|------------|--------------|--------|
| Pressure | Maximum Flow | Radius |
| 5 PSI | 0-3.3 GPH | 8.7" |
| 10 PSI | 0-4.7 GPH | 9.1" |
| 20 PSI | 0-6.8 GPH | 9.5" |
| 30 PSI | 0-8.3 GPH | 11.0" |
| 40 PSI | 0-9.7 GPH | 12.4" |



SPECTRUM™

Spectrum sprayers have a full-circle spray pattern that can be easily adjusted for areas that vary in size or watering need. Great for trees, shrubs, and small turf areas.

- Easy to clean
- Fully adjustable up to 12' diameter
- Can be completely turned off
- Excellent way to establish plants with changing water needs

| | | |
|-----------|---------------------|-------------|
| MSPB-5 | 1/4" Barbed Base | \$3.49/5 |
| MSPB-100 | 1/4" Barbed Base | \$54.95/100 |
| MSPS-5* | 5" Stake | \$4.79/5 |
| MSPS-100* | 5" Stake | \$79.95/100 |
| MSPT-5 | 10-32 Threaded Base | \$3.49/5 |
| MSPT-100 | 10-32 Threaded Base | \$54.95/100 |

*Break-off Transfer Barb (14TB) is for use with 1/4" tubing.

| Flow Chart | | |
|------------|--------------|----------|
| Pressure | Maximum Flow | Diameter |
| 15 PSI | 17 GPH | 9' |
| 20 PSI | 20 GPH | 11' |
| 30 PSI | 24 GPH | 12' |



EIN DOR MINI-SPRINKLERS

These mini-sprinklers are great for landscaped areas, garden beds, propagation, and smaller container groupings. A flat spray angle reduces wind drift. Full circle spray pattern with even distribution of droplets.

The sprinkler heads have a press-fit base, which must be used with either a Support Assembly, Press-Fit Barb, or Press-Fit Adapter (see MESK, MEBARB below). Use either the Plug (MEPLUG) or Press-Fit Valve (MEVSO) to shut off individual sprinkler heads.

All Mini-Sprinklers \$3.95/5 \$59.95/100

| Part # | Color | Flow* | Diameter |
|--------|--------|--------|----------|
| MELOW | Purple | 5 GPH | 5' |
| MELTB | Blue | 10 GPH | 7' |
| MEBLA | Black | 18 GPH | 9' |
| MERED | Red | 32 GPH | 13' |

*Measured at 30 PSI. Diameter is approximately 10% smaller at 25 PSI. 20% diameter loss when inverted.



WING SPRINKLERS

A low-cost alternative for large areas. Great for xeriscapes where low water usage is desirable. Best at low pressures (15–30 PSI). Full circle only with even distribution of droplets.

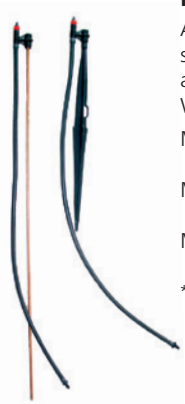
Press-fit sprinklers must be used with either the Press-Fit Support Assembly, Press-Fit Barb, or Press-Fit Adapter (MESK, MEBARB) for use in mainline or ¼" tubing. Optional shutoff valve (see MEVSO). Operates in upright position only.

All Wing Sprinklers \$4.95/5 \$93.95/100

| Part # | Color | Flow @ 30 PSI | Diameter @ 30 PSI |
|--------|-------------|---------------|-------------------|
| MSWGR | Olive Green | 5 GPH | 8' |
| MSWLW | Light Blue | 9 GPH | 15' |
| MSWBL | Black | 18 GPH | 19' |
| MSWBRN | Brown | 34 GPH | 22' |

PRESS-FIT ACCESSORIES

Press-Fit accessories are super easy to install and hold up to 40 PSI using normal hand strength.



Press-Fit Support Assembly

A complete stake assembly that includes a plastic stake or metal rod, bridge, ¼" flexible vinyl tubing and a transfer barb. For Ein Dor Mini-Sprinklers and Wing Sprinklers only.

- MESK 13" Plastic Stake with 2' Tubing \$1.79
- MESK18 18" Metal Rod with 2' Tubing \$2.39
- MESK36 36" Metal Rod with 3' Tubing \$17.95/5*

*Due to shipping issues, 5 is the minimum quantity.



Press-Fit Barb

Use with Mini-Sprinklers and Wing Sprinklers. The barb end fits ¼" (.250" OD) tubing.

- MEBARB-5 \$1.69/5
- MEBARB-100 \$14.95/100



Press-Fit Valve *Easier than a plug!*

Install between the bridge and sprinkler head as an individual shutoff.

- MEVSO \$3.10/5



Plug

To shut off a Mini-Sprinkler, remove the sprinkler head and insert this special press-fit plug.

- MEPLUG \$1.95/5



GROWER'S CHOICE

BEST SELLER!

DOWN-SPRAY SPRINKLERS (FULL CIRCLE)

Down-Spray sprinkler assemblies include a 12" galvanized wire stake and 36" of supply tubing with barb. The C-Frame Down-Spray is a 360° spray jet with a 45° downward trajectory that targets the root zone, to reduce runoff and eliminate over-spray.

- 20" diameter, full-circle spray pattern
- Wets evenly with minimal surface disturbance
- Use on large plants or containers
- UV stabilized for long life
- Shutoff clip to stop flow (sprinkler assembly only)

| Color | GPH @ 10 PSI | GPH @ 20 PSI |
|-------|--------------|--------------|
| Black | 4.8 | 7.2 |
| Blue | 7.0 | 10.5 |

Complete Sprinkler Support Assembly with Tubing & Stake

- MADASBLK-5 Black . . . \$8.95/5
- MADASBLK-25 Black . . . \$39.95/25
- MADASBLU-5 Blue . . . \$8.95/5
- MADASBLU-25 Blue . . . \$39.95/25

Without Sprinkler Support Assembly (Head Only)

- MADBLK-5 Black . . . \$1.59/5
- MADBLK-100 Black . . . \$24.95/100
- MADBLU-5 Blue . . . \$1.59/5
- MADBLU-100 Blue . . . \$24.95/100



MINI-JETS

These very popular and economical sprayers work well at pressures as low as 5 PSI. They have a flat spray angle to minimize water on foliage, and various spray patterns and flows to provide versatility. At pressures above 30 PSI, the spray turns into more of a mist. All Mini-Jets have a 10-32 threaded base and will fit into ¼" tubing, or Rigid Risers. Use the hex end of the Orange Handle Punch (p. 16) for easy installation.

All Mini-Jets \$2.19/10 \$18.00/100



Possibly the only spray head you will ever need!

| Part # | Color | Spray Pattern | @ 15 PSI GPH Radius/Ft | | @ 30 PSI GPH Radius/Ft | |
|---------|-------|---------------|------------------------|----|------------------------|----|
| MSBL90 | Black | Quarter | 4.8 | 4 | 6.8 | 6 |
| MSBL180 | Black | Half | 4.8 | 3 | 6.8 | 4½ |
| MSBL300 | Black | Full | 4.8 | 4 | 6.8 | 5 |
| MSBLSTR | Black | Strip | 4.8 | 4 | 6 | 4½ |
| MSBU90 | Blue | Quarter | 5 | 4½ | 12.9 | 6 |
| MSBU180 | Blue | Half | 8.8 | 3½ | 12.9 | 5 |
| MSBU300 | Blue | Full | 8.8 | 4½ | 12.9 | 5½ |
| MSBUSTR | Blue | Strip | 8.9 | 5½ | 10.4 | 6 |
| MSGR90 | Green | Quarter | 13.8 | 4½ | 19.5 | 6½ |
| MSGR180 | Green | Half | 13.8 | 4 | 19.5 | 5½ |
| MSGR300 | Green | Full | 13.8 | 5 | 19.5 | 6 |
| MSGRSTR | Green | Strip | 15.3 | 7 | 18.3 | 7 |
| MSRD90 | Red | Quarter | 20.0 | 5 | 28.9 | 6½ |
| MSRD180 | Red | Half | 20.0 | 4½ | 28.9 | 6 |
| MSRD300 | Red | Full | 20.0 | 5 | 28.9 | 4½ |
| MSRDSTR | Red | Strip | 21.6 | 7½ | 26.5 | 10 |



WITH DEFLECTOR

WITHOUT DEFLECTOR

Note: For part numbers in below chart, stock spinners are pre-installed and do not include tubing. The blue spinner (MSNSBLD) must be ordered separately and changed out.

| Part # | Base Color | Flow | Spinner | Wetted Radius |
|-----------|------------|----------|------------------------|---------------|
| MSNP(T) | Purple | 5.3 GPH | Purple (stock) | 8' |
| | | | Blue with deflector | 2' |
| | | | Blue without deflector | 4' |
| MSNBLU(T) | Blue | 10.9 GPH | Purple (stock) | 8.5' |
| | | | Blue with deflector | 3' |
| | | | Blue without deflector | 5.5' |
| MSNBLA(T) | Black | 18.9 GPH | Black (stock) | 10' |
| | | | Blue with deflector | 3' |
| | | | Blue without deflector | 8' |



TREE WATERING STAKES

We recommend these stakes for saturating the soil at a deep level. This encourages trees to send their roots further down, improving survival rates in drought and high winds. Promoting a deep root system also reduces surface cracking and buckling near pathways, sidewalks, patios, or driveways.

- Conserves water, prevents runoff and erosion
 - Aerates the soil, promotes deeper rooting
 - You can easily add fertilizer into the shaft
 - Internal filter to keep roots and rocks out
 - Easy to drive the stake into the soil
- UV protected slotted cap for drip tubing
 - 14" stake is used for small trees, shrubs, rose bushes

| | | |
|--------|-----|---------|
| ASTK14 | 14" | \$9.95 |
| ASTK24 | 24" | \$10.95 |



SUPERNET PRESSURE COMPENSATING SPRINKLERS

Water more trees on the same zone with equal water distribution regardless of row length or elevation changes. Spray pattern may be enlarged as trees grow by simply changing the spinner. Heavy-duty construction for long life. Mounts on support stake (see below).

- Excellent for long rows and uneven terrain
- Ideal for orchards and new tree plantings
- Easy assembly
- Clog resistant and self-flushing
- Pressure range 25–50 PSI
- Replace purple spinner with MSNSBLD to water younger trees. Break off deflector as tree grows.



SuperNet Assemblies

We recommend purchasing SuperNet sprinklers with the tubing and barb pre-installed. See flow and radius descriptions below.

| | | |
|-----------------------|---------------------|--------|
| MSNP | Purple Base (Stock) | \$4.69 |
| MSNBLUT | Blue Base | \$4.69 |
| MSNBLAT | Black Base | \$4.69 |
| Sprinkler Only | | |
| MSNP | Purple Base (Stock) | \$3.49 |
| MSNBLU | Blue Base | \$3.49 |
| MSNBLA | Black Base | \$3.49 |



SuperNet Accessories

The SuperNet sprinkler can be mounted on the MSNSTK stake.

| | | |
|---------|-----------------------------|--------|
| MSNSBLD | Blue Spinner with Deflector | \$0.34 |
| MSNSTK | 13" Blue Support Stake | \$0.99 |



HARD WATER CONDITIONING

Looking to solve hard water problems in your drip system, house, or business? Commercial growers and backyard gardeners have seen their hard water issues get resolved with these easy to install products.



AQUABOLT

The Aquabolt™ is ideal for hard water conditions for commercial growers and agricultural applications. Resolve saline water problems with this double-duty Aquabolt. The Aquabolt includes a static mixer to provide additional agitation for maximum benefits. Aquabolt will provide relief to hard water issues without the need to use chemicals.

- Improves solubility and nutrient uptake
- Reduces spider mites and mold
- Keeps irrigation lines, emitters, and nozzles free of mineral buildup
- Neutralize soil pH and improve soil health
- Chemical free, energy free, and maintenance free
- Pressure range: 0–110 PSI
- ¾" flow rate up to 3,300 GPH
- 1" flow rate up to 5,400 GPH

| | | |
|-------------|------------------------|------------|
| MAGAQUA34 | ¾" FPT | \$1,174.95 |
| MAGAQUA1 | 1" FPT | \$1,409.95 |
| MAGAQUASS34 | ¾" FPT Stainless Steel | \$1,844.95 |
| MAGAQUASS1 | 1" FPT Stainless Steel | \$2,039.95 |



TURFBOLT 3/4" HT

The Turfbolt™ inline unit improves soil infiltration, improves moisture retention and boosts soil health. It reduces mineral scale buildup, and will help reduce the need for chemicals to keep irrigation lines, emitters, and nozzles clean. Turfbolt ¾" Hose Thread can be installed inline for drip irrigation systems.

- Reduces water hardness
- Improves nutrient uptake
- Neutralize soil pH and improve soil health
- Chemical free, energy free, and maintenance free
- Pressure range: 0–110 PSI
- ¾" flow rate up to 3,300 GPH

| | | |
|-----------|--|----------|
| MAGTURF34 | | \$309.95 |
|-----------|--|----------|



RAINBOLT

The Rainbolt™ inline unit transforms your water quality to a healthier, more productive, and energized state. It will bust salts, improve soil infiltration, and improve moisture retention. It reduces mineral scale buildup and will help eliminate the need for chemicals to keep pipes, pumps, and emitters clean. For residential use, The Rainbolt ¾" or 1" is designed to soften water for an entire house and typically one unit is sufficient.

- Improved crop yield, healthier soils, and plant vitality
- Chemical free, energy free, and maintenance free
- Pressure Range: 0-110 PSI
- ¾" Flow rate up to 3300 GPH
- 1" Flow rate up to 5400 GPH

| | | |
|-----------|--------|----------|
| MAGRAIN34 | ¾" FPT | \$464.95 |
| MAGRAIN1 | 1" FPT | \$544.95 |



MAGNETIC WATER CONDITIONING

Magnetic water conditioning sets can help soften hard water without chemicals. As water passes through the magnetic field, lime, and calcium are suspended so they can be flushed out of the system instead of building up in drip emitters, pipes, appliances, toilets, and tubs. The units are sized

for maximum pipe flow. Magnets may be doubled up for higher flows. Works on PVC, copper, and poly pipe. Do not install on iron pipe or underground.

- Helps eliminate and prevent scale buildup
- Reduces costly maintenance
- Requires no power, salt, or chemicals

| | | |
|------|---------------------------------|----------|
| MAG1 | Drip System, ½"-1" Pipe @12 GPM | \$79.95 |
| MAG2 | Whole House, ½"-1" Pipe @12 GPM | \$129.95 |
| MAG3 | Ag/Industrial, 1" Pipe @25 GPM | \$219.95 |

EASY COMPOSTING

Composted material makes rich fertilizer, and today’s composters make the process easy, odorless, and environmentally sound.

Explore our video library to see these products in action at DRIPWORKS.COM



JORA COMPOST TUMBLER

The Jora Compost Tumbler is the easiest to use and most efficient waste composter ever made. Compost kitchen and garden waste fast. Toss in your fruit, vegetable, and grain scraps and in no time you’ll have rich, black organic compost for your garden or houseplants.

Call for shipping quote.

| | | | |
|-----------|------------|-------|----------|
| AJCOMP33 | 33 gallon | | \$349.00 |
| AJCOMP70 | 70 gallon | | \$459.00 |
| AJCOMP106 | 106 gallon | | \$869.00 |



COMPOST KEEPERS

Our assortment of compost pails will keep your countertop clear of food scraps and do it with style! Available in white, red, or black ceramic and stainless steel 1 gallon capacity. Includes two charcoal filters.

| | | | |
|---------|------------------------------|-------|---------|
| APAILCW | Ceramic Compost Pail (White) | | \$29.95 |
| APAILCR | Ceramic Compost Pail (Red) | | \$29.95 |
| APAILCB | Ceramic Compost Pail (Black) | | \$29.95 |
| APAIL | Stainless Compost Pail | | \$44.95 |
| APCFIL | Ceramic Pail Filter | | \$4.95 |
| APFIL | Stainless Charcoal Filters | | \$6.95 |



CHAPIN HYDROFEED FERTILIZER INJECTOR

Ideal for small to medium-size gardens. Fertilizer injector comes with a clear tank for easy monitoring of usage, and funnel-top mouth for easy filling. Drain valve will allow you to quickly empty remaining product and water from the tank. Use with liquid, granular concentrates, or fish emulsion applications. Works best at 40 PSI. Maximum incoming pressure 60 PSI.

| | | | |
|-------|-------------|-------|---------|
| IHF16 | 16 oz. Tank | | \$34.95 |
| IHF24 | 24 oz. Tank | | \$39.95 |
| IHF32 | 32 oz. Tank | | \$69.95 |

CHAPIN PRO SERIES POLY SPRAYER

Anyone can use the Chapin ProSeries Poly Sprayer from the homeowner to a landscape professional. This sprayer features the SureSpray Anti-Clog filter, which will guarantee great performance every time. Use with fertilizers, weed killers, or pesticides.

| | | | |
|-------|----------|-------|---------|
| APRO1 | 1 gallon | | \$34.95 |
| APRO2 | 2 gallon | | \$39.95 |
| APRO3 | 3 gallon | | \$44.95 |



ECONOMICAL INJECTORS

Economical, flexible, and easy to use, these injectors are ideal for small to medium sized gardens, orchards, or grows. Hook them to your drip system to fertilize while you water.

Find the replacement parts you need at DRIPWORKS.COM



EZ-FLO FERTILIZER INJECTORS

Recommended for backyard gardeners, commercial landscapers, and small farms. Just fill the tank (with premixed dry fertilizer or a concentrated liquid fertilizer — not oil based), set the adjustment valve, and the fertilizer solution will automatically flow when the system runs.

- Low minimum flow (120 GPH) with standard bib adapter (IEZBIB)
- Works down to 7.5 GPH using included flow restrictor discs
- Tank sits on ground for less stress on fittings and easier filling
- Adjustable dilution rates from 100:1 to 1,000:1

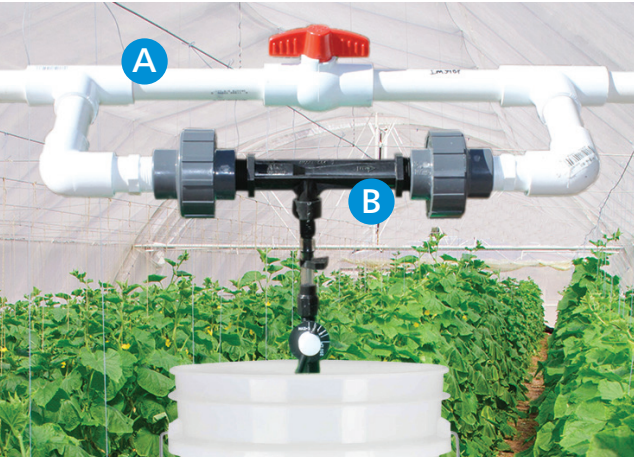
EZ-Flo Low-Pressure Tanks

| | | | |
|----------|--------------------------|-------|----------|
| IEZH34 | ¾ Gallon Tank @ 5-50 PSI | | \$79.95 |
| IEZH2 | 2 Gallon Tank @ 5-50 PSI | | \$99.95 |
| IEZ1GUP* | 1 Gallon Tank @ 5-80 PSI | | \$139.95 |

*IEZ1GUP is rated for high pressure.

MAZZEI INJECTOR LINE

This Venturi-style injector is a great low-cost option that delivers excellent results. It's commercial grade with no moving parts, so it's easy to maintain and worry-free. Perfect for use with water soluble organic fertilizers.



MAZZEI UNIT INSTALLED WITH BYPASS ASSEMBLY

These assemblies are pre-made of Schedule 40 PVC with a ball valve to control the flow and unions for easy injector removal (for cleaning). The 3/4" bypass can be adapted to hose threads with the AFHI and/or AMHI adapters on p. 23. For use with Mazzei injectors only.

A

BYPASS ASSEMBLY
(PVC socket inlet and outlet)

B

INJECTOR



SUCTION ASSEMBLIES

All include 10' of clear vinyl suction tubing, metering valve, strainer, and connecting fittings. All Mazzei injectors on this page include a built-in check valve.

MAZZEI (VENTURI STYLE) FERTILIZER INJECTOR

As water passes through the unit, a pressure differential creates a vacuum that draws fertilizer into the line. You may need to experiment to get the dosages required, but once operating, the Mazzei is incredibly reliable and easy to use. Pressure range 20–100 PSI.

- Easy installation
- Energy efficient
- Male pipe thread (MPT) inlet and outlet
- Trouble free
- Units may be purchased individually or with a suction assembly.

1/2" Injectors and Accessories

| | | |
|----------|--------------------------------------|---------|
| IM12VLF | 1/2" Very Low Flow Injector (#283) | \$39.95 |
| IM12L | 1/2" Low Flow Injector (#287) | \$39.95 |
| IM12BPL▲ | 1/2" Low Flow Bypass Assembly | \$27.95 |
| IM12H | 1/2" High Flow Injector (#384) | \$57.95 |
| IM12BPH▲ | 1/2" High Flow Bypass Assembly | \$27.95 |
| IM34SA | 1/2" Suction Assembly (same as 3/4") | \$64.95 |

3/4" Injectors and Accessories

| | | |
|---------|--------------------------------------|---------|
| IM34L | 3/4" Low Flow Injector (#484A) | \$54.95 |
| IM34H | 3/4" High Flow Injector (#584) | \$54.95 |
| IM34BP▲ | 3/4" Bypass Assembly (either flow) | \$29.95 |
| IM34SA | 3/4" Suction Assembly (same as 1/2") | \$64.95 |

1" Injectors and Accessories

| | | |
|--------|--------------------------------------|----------|
| IM1L | 1" Low Flow Injector (#878) | \$89.95 |
| IM1 | 1" High Flow Injector (#1078) | \$89.95 |
| IM1BP▲ | 1" Bypass Assembly | \$34.95 |
| IM1SA | 1" Suction Assembly (same as 1 1/2") | \$129.95 |

| Mazzei Flow Chart (Venturi style) | | | |
|-----------------------------------|------------------------------|---|----------------------|
| Size | Minimum Flow at 50 PSI Inlet | Fertilizer Draw with outlet pressure at | |
| | | 30 PSI (20 PSI drop) | 10 PSI (40 PSI drop) |
| 1/2" Very Low (#283) | 30 GPH | 2 GPH | 6 GPH |
| 1/2" Low (#287) | 60 GPH | 3 GPH | 8 GPH |
| 1/2" High (#384) | 150 GPH | 10 GPH | 14 GPH |
| 3/4" Low (#484A) | 240 GPH | 12 GPH | 17 GPH |
| 3/4" High (#584) | 425 GPH | 21 GPH | 25 GPH |
| 1" Low (#878) | 750 GPH | 56 GPH | 75 GPH |
| 1" High (#1078) | 1050 GPH | 86 GPH | 92 GPH |



GROWER'S CHOICE

MIXRITE INJECTOR FOR THE PROFESSIONAL GROWER

This injector is precision made in Israel and is ideal when injecting either organic and synthetic fertilizers.

The MixRite injector is the easiest commercial fertilizer injector to clean and maintain.

With only three seals to replace, it can be rebuilt and put back into service in a fraction of the time other units require.

It reliably meters fertilized solution into your line and is powered entirely by the water flowing through it. Choose the MixRite according to the concentration of fertilizer you want to add. Install on a bypass for easy cleaning and maintenance. A 2% internal bypass unit used for injecting highly corrosive solutions is available at Dripworks.com.

- Simple to install, operate, and maintain
- Pressure loss at max flow: 14.5 PSI
- Shutoffs on all models except IMR1
- UV-resistant plastic



| Part # | Flow in GPH | Mix Ratios | Pressure Range | Inlet/Outlet | Max Flow | Price | Features |
|-----------|-------------|---------------------------|----------------|--------------|----------|----------|--|
| IMR1▲ | 5.4–660/GPH | 100:1 1% (non-adjustable) | 3–120 | 3/4" MPT | 11 GPM | \$299.95 | This specific MixRite model is non-adjustable and does not have a manual shutoff. Ideal for cleaners that are not corrosive and fertilizers. |
| IMR2SO▲ | 5.4–660/GPH | 500:1–50:1 .2 to 2% | 3–120 | 3/4" MPT | 11 GPM | \$398.95 | These models have a manual On-Off that will shut down additive injection, allowing a continual water flow. Select the model with the desired fertilizer dilution concentration (mix ratio) for the fertilizer or additive that you are injecting into your line. *Choose the IMR10V2 for less concentrated, organic fertilizers. The 10% allows for a higher dose or organic fertilizer. |
| IMR4SO▲ | 5.4–660/GPH | 250:1–25:1 .4 to 4% | 3–120 | 3/4" MPT | 11 GPM | \$398.95 | |
| IMR10V2*▲ | 5.4–840/GPH | 100:1–10:1 1 to 10% | 3–120 | 3/4" MPT | 11 GPM | \$599.95 | |

Prevent water from flowing back into your home water supply with backflow prevention check valves and vacuum breakers at DRIPWORKS.COM

CONTROL YOUR GREENHOUSE ENVIRONMENT

Use these misters on patios and decks, in barns, greenhouses, and kennels, and around the pool. They are good for starting delicate seedlings, salad greens, and ferns.

Find greenhouse watering solutions at DRIPWORKS.COM



TORNADO MISTERS

Higher flows for seed propagation and moisture-loving plants. Great for giant pumpkins! Simply insert into the end of 1/4" tubing, mainline, or PVC.

- Even distribution
- Threaded base (10–24 thread)
- Pressure range: 20–60 PSI

All Tornado Misters \$2.95/5 \$52.00/100

| Part # | Color | @ 20 PSI | | @40 PSI | |
|--------|-------|----------|-----|---------|-----|
| | | GPH | DIA | GPH | DIA |
| MTFB | Black | 4 | 4' | 5 1/2 | 4' |
| MTFR | Red | 8 | 6' | 11 1/2 | 6' |



INVERTED MINI WOBBLER

Specially designed for overhead applications. Great for seed propagation. Fine spray and outstanding uniformity.

- Base: 1/2" MPT
- Flow: 45–75 GPH
- Optimal Pressure: 20–25 PSI
- Covers large area

Fine Spray Overhead Sprinkler

| Part # | Nozzle Color | @ 20 PSI | | @25 PSI | | Price |
|--------|---|----------|------|---------|-------|--------|
| | | GPH | DIA* | GPH | DIA* | |
| MWIG | Gold | 66/GPH | 34' | 75/GPH | 34.5' | \$5.95 |
| MWIBG | Beige | 45/GPH | 32' | 60/GPH | 32.5' | \$5.95 |
| MWANTI | Anti-Drip Add-On (Sprinkler head sold separately) | | | | | \$5.98 |

*Diameter at 6' above beds.



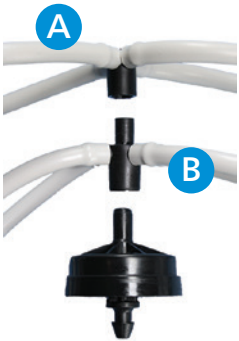
WOODPECKER MULTI-OUTLET DRIPPER ASSEMBLY

Use these assemblies to split the flow of one Woodpecker or Woodpecker Jr. (p. 26) into 4 or 8 containers. Reduces flow and saves money. Great for greenhouses and nurseries.

- Attaches to the outlet of the emitter
- Each assembly includes two 18" and two 30" tubes with Arrow Drippers attached
- DMWASS is for four outlets only
- DMWST is a stackable assembly

| | | |
|--------|------------------------------------|--------|
| DMWASS | 4-Way Flat Assembly | \$3.29 |
| DMWST* | 4-Way Stackable Assembly | \$3.29 |

*Use with DMWASS for 4 more containers. Woodpecker Emitters not included.



ASSEMBLY OPTIONS

These pre-assembled units can water 4, 8, or more containers coming off one Woodpecker PC emitter.

A DMWASS Flat Assembly

B DMWST Stackable Assembly



FOGGER WITH ANTI-DRIP

This versatile fogger from Rivulus is great for seed propagation, greenhouse humidification or livestock cooling. The built-in anti-drip prevents over-watering after the system shuts off. This is a high-pressure fogger with an optimal operating range of 50–70 PSI. Watering diameter 2'-3'.

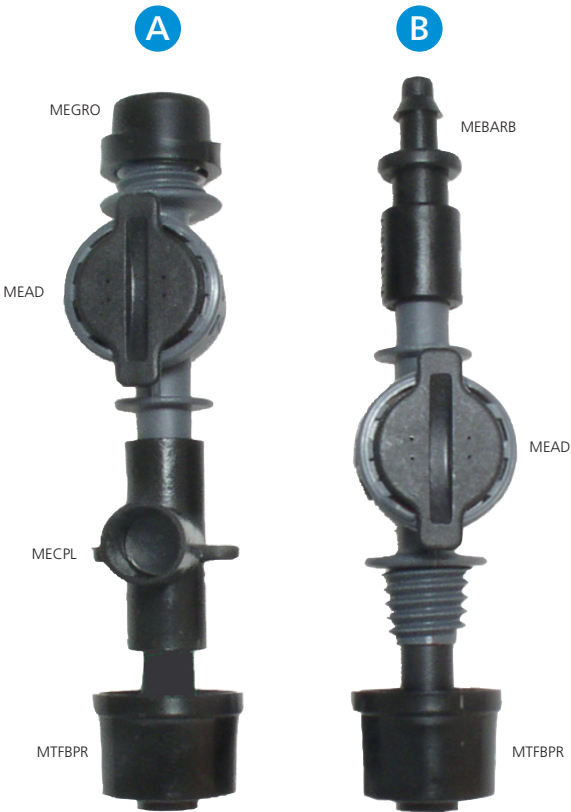
| | | |
|------|-----------------|--------|
| MF2W | 2-Way | \$3.49 |
| MF4W | 4-Way | \$4.95 |



VARI MISTER

The Vari Mister has a built-in valve to control the flow and pattern size of the spray. Maximum diameter is 36". Can be shut off when not in use. Maximum flow ranges from 4 GPH at 10 PSI to 7 1/2 GPH at 30 PSI. 10–32 threaded base works with 1/4" tubing or a Rigid Riser.

MV-5 \$4.29/5



ANTI-DRIP DEVICES FOR HANGING MISTERS AND SPRINKLERS

In greenhouses with overhead irrigation, each sprinkler or mister assembly needs an anti-drip device to prevent damage to plants directly below. All parts have press-fit ends for easy installation. Use with Mini-Sprinkler Heads (p. 32) or Tornado Misters with press-fit bases (below). Note: The anti-drip device works in both directions. 10 PSI minimum to open.

| | | |
|------------|--|-------------|
| MEAD | Anti-drip (minimum 10 PSI) | \$1.89 |
| MEGRO | Grommet for PVC Insertion | \$1.05 |
| MECPL | Press-fit Coupler | \$2.49/10 |
| MEBARB-5 | Barb for Poly Insertion | \$1.69/5 |
| MEBARB-100 | Barb for Poly Insertion | \$14.95/100 |
| MTFBPR | Black Tornado Mister* (low flow) | \$2.95/5 |

*5.5 GPH/4' diameter at 40 PSI.

ASSEMBLY NOTES

These examples show two options for anti-drip device setup: (A) When drilling into PVC pipe; (B) When punching into poly tubing.

INTO PVC

A A 7/16" hole is drilled into PVC, MEGRO inserted, and MEAD threaded into the grommet. Press-fit coupler (MECPL) joins the anti-drip device to the press-fit mister.

INTO POLY

B A hole is punched into poly tubing (punches, p. 16) and the assembled MEBARB + MEAD + press-fit mister is inserted.

PROTECT YOUR CROPS

Use our quality protective covering materials for greenhouses and high tunnels. We sell two materials that growers use to control your plants’ environment and to safeguard their crops from the elements. Both materials are specifically formulated for greenhouse application.

GREENHOUSE MATERIAL 12 MIL

Greenhouse material is cut to size to your specifications and priced by the square foot (sq. ft.). One-piece greenhouse material can be fabricated in sizes up to 150,000 sq. ft. Material under 1,000 sq. ft. are charged an additional \$40.00 handling fee.

Call for shipping quote.

- Tear and puncture resistant
- Allows up to 80% UV Transfer
- Custom cut to your specifications
- Fast shipping
- Bursting strength 280 PSI
- Max size 150,000 (sq. ft.)

PDB12CLEAR \$0.29 per sq. ft.



BLACK/WHITE 12 MIL

This extra-heavy, high-end reinforced cover is popular for creating artificial growing conditions that encourage multiple harvests annually. The black side keeps it dark the white side reflects the sun. Tarps are custom cut to size to your specifications and priced by the square foot (sq. ft.). One-piece tarps can be fabricated in sizes up to 150,000 sq. ft. Tarps under 1,000 sq. ft. are charged an additional \$40.00 handling fee.

Call for shipping quote.

- Tear and puncture resistant
- Reinforced double-sided cover
- Custom cut to your specifications
- Fast shipping
- Bursting strength 350 PSI
- Max Size 150,000 (sq. ft.)

PDB12BW \$0.27 per sq. ft.



This is a reinforced double-sided cover



FORGET ABOUT FROST

Extend your growing season! Shield your plants and crops from wind, insects, and cold.

Get more tips on protecting plants from freezing temps at DRIPWORKS.COM

GCI ROWCOVER

GCI Rowcover shields plants from frost, cold, wind, and insects. It is an easy way to prolong the growing season in both spring and fall. Available in two weights for use on row crops, garden beds, shrubs, individual fruit trees, and deck containers.



GCI Lightweight Frost Protection

Jumpstart or prolong the growing season. Increase yield and protect plants from frost, wind, and insect damage.

- 85% light transparency
- 0–4 degrees frost protection

| | | | |
|-----------|-------------|-------|----------|
| GC05750 | 7' x 50' | | \$18.95 |
| GC057250 | 7' x 250' | | \$49.95 |
| GC057500 | 7' x 500' | | \$99.95 |
| GC0571000 | 7' x 1,000' | | \$199.95 |



GCI Mediumweight Frost Protection

Use on nursery stock, vegetables, berries, and bedding plants. Protects from frost, wind, and insect damage.

- 70% light transparency
- 4–6 degrees frost protection

| | | | |
|-----------|-------------|-------|----------|
| GC10750 | 7' x 50' | | \$24.95 |
| GC107250 | 7' x 250' | | \$114.95 |
| GC107500 | 7' x 500' | | \$189.95 |
| GC1071000 | 7' x 1,000' | | \$345.95 |



CLEARSPAN HIGH TUNNEL GREENHOUSE

Extend your growing season, save water, and keep crops disease-free. Ideal for vegetables, small fruit, cut flowers, and more.

- Frames are manufactured from our USA-made, triple-galvanized structural steel tubing.
- Made from strong copolymer resin, with tri-layer construction and UV additives. Film offers 92% light transmission. Comes with 4 year warranty.
- Triple-zippered end panels are 10 oz., 22 mil premium rip-stop, translucent fabric, complete with fabric clips for attaching.
- Easy four-sided ventilation. Roll-Up Sides feature our exclusive Twist-of-the-Wrist Roll-Up Assembly.
- Heavy-duty ground posts are included.

Call for pricing and shipping quote.



SOLEXX™ PRE-CUT ROLLS

Solexx™ 3.5 and 5mm Pre-Cut Rolls are perfect for building a custom greenhouse or salvaging an existing one. Solexx greenhouse covering surpasses others in insulation, light quality, and longevity.

- Solexx™ diffuses the light throughout the greenhouse for optimal plant growth.
- Double-walled insulated greenhouse material helps hold in the heat.
- Flexible; can wrap around peaks and corners for a watertight seal.
- No power saw required.
- Installs both horizontally and vertically (unlike polycarbonate) for less waste.

Call for sizing, pricing, and shipping quote.



LOOP HOOPS FOR ROWCOVERS

Heavyweight galvanized steel hoops have “no knot tie loops.” Simply run string through the loops and down the full length of the bed to help support row cover fabric.

- Approximate dimensions: 24" H x 16" W
- AGHOOP \$29.50/10 \$260.00/100



FLUSH VALVES

The flush valve opens when pressure drops below 2.5 PSI to drain standing water in the supply lines and prevent prolonged dripping on your plants and seedlings.

| | | |
|-----|-----------------------------|--------|
| VFH | Female Hose Thread | \$1.29 |
| VFP | ¾" Female Pipe Thread . . . | \$1.29 |



LONG-LASTING POND LINERS

REINFORCED POLY POND LINERS

For the highest-quality water containment with the longest-lasting material, our reinforced poly liners are the best choice. Made to order at the factory, they usually ship within days, allowing extremely fast installation. The liner is rolled onto a core with an unroll strap and, if possible, shipped directly to the site.

- The strongest, most flexible reinforced poly liners!
- High puncture resistance and tear strength
- Minimum 20–25 year life when covered
- NSF certified, can be used for potable water

| Reinforced Polyethylene Pond Liners | | | | |
|-------------------------------------|--------------|--------------|--------------|--------------|
| Reinforced Polyethylene | 20 mil PDB20 | 24 mil PDB24 | 30 mil PDB30 | 40 mil PDB40 |
| Square foot price | \$0.35 | \$0.45 | \$0.53 | \$0.65 |
| Lbs/1,000 sq. ft. | 75 | 95 | 135 | 138 |
| Max size (sq. ft.) | 100,000 | 75,000 | 80,000 | 40,000 |
| Expected life in years (exposed) | 10 | 10 | 12 | 15 |
| Warranty (covered) | 20 yrs | 20 yrs | 20 yrs | 20 yrs |

Find how-to videos, pond calculators, and more about pond care at [DRIPWORKS.COM/RESOURCES](https://www.drripworks.com/resources)



CLEAROUT

ClearOut will restore water clarity and balance. The beneficial bacteria will quickly and safely digest organic debris, helping improve pond odors.

- Clears water and supports a healthy ecosystem
- Easy to use water soluble packets
- Eliminates nutrients, odors and suspended organics
- All natural and safe for all aquatic life
- Treats ¼ acre for up to 3 months

CLROUT.....\$349.99



MUCKOUT

Clean the bottom of your pond with MuckOut; reduces 2” of muck per month. The beneficial bacteria will quickly and safely digest organic debris. Improve pond odors, helps keep your pond water clear and balanced. Safe for aquatic and domestic life, use as directed. Apply every 2 to weeks when the water temperature is above 50° F.

- Converts muck into odorless gas
- Great for beaches, docks, shorelines, or ponds and lakes
- Highly concentrated natural bacteria and enzyme formulation
- All natural and safe for all aquatic life
- Treats 1 acre for up to 3 months

MUKOUT.....\$99.99

PROTECT YOUR POND INVESTMENT

Shield your pond liner so it lasts for a thriving, healthy pond.



GEOTEXTILE POND LINER PROTECTIVE MATERIAL

Non-woven geotextile fabric is a puncture-resistant, cost-effective, long-term solution for protecting EPDM or Poly liners. Used as pond liner underlayment, the soft, 8 oz. fabric (like a wool blanket) protects liners from large rocks and other sharp objects that may be hidden in the soil (sharp gravel, tree branches, glass, metal, etc.).

In the photo above, geotextile has been installed as an underlayment to protect the liner from rocks and sharp objects.

Also used for:

- Site drainage
- French drains
- Leach field gravel covering
- Erosion control
- Use under Poly liners when necessary

Custom sizes available!
Orders can be matched to your pond liner purchase.

| Geotextile Pricing | | | |
|--------------------|--------|------------|------------|
| Part # | Size | Size | Price |
| PDGEOB1515 | Bundle | 15' x 15' | \$69.95 |
| PDGEOB1525 | Bundle | 15' x 25' | \$111.95 |
| PDGEOB1575 | Bundle | 15' x 75' | \$269.95 |
| PDGEOR15 | Roll | 15' x 300' | \$1,059.95 |

Pond liner should be unfolded over the geotextile.

EPDM RUBBER POND LINER

The most flexible and natural-looking pond liner

- Ideal for water gardens including waterfalls and streams
- The most flexible waterproof barrier for indoors or out
- UV stabilized for up to 20 years exposed to the sun

| EPDM Rubber Liner Pricing | | | |
|---------------------------|-----------|--------------|------------|
| Part# | Dimension | Weight (lb.) | Price |
| PDEPDM520 | 5 x 20 | 30 | \$159.00 |
| PDEPDM550 | 5 x 50 | 83 | \$259.00 |
| PDEPDM5100 | 5 x 100 | 165 | \$495.00 |
| PDEPDM1010 | 10 x 10 | 28 | \$119.00 |
| PDEPDM1015 | 10 x 15 | 45 | \$169.00 |
| PDEPDM1050 | 10 x 50 | 165 | \$559.00 |
| PDEPDM1515 | 15 x 15 | 63 | \$249.00 |
| PDEPDM1520 | 15 x 20 | 84 | \$345.00 |
| PDEPDM1525 | 15 x 25 | 105 | \$429.00 |
| PDEPDM1550 | 15 x 50 | 225 | \$795.00 |
| PDEPDM2020 | 20 x 20 | 112 | \$445.00 |
| PDEPDM2025 | 20 x 25 | 165 | \$545.00 |
| PDEPDM2030 | 20 x 30 | 180 | \$659.00 |
| PDEPDM2050 | 20 x 50 | 300 | \$1,095.00 |
| PDEPDM2530 | 25 x 30 | 225 | \$805.00 |
| PDEPDM3030 | 30 x 30 | 270 | \$956.00 |

Read more about ponds in our blog section at DRIPWORKS.COM

Shipping Instructions for Pond Liners
Please call 800.522.3747 for a freight quote and estimated delivery time.

Shipping is not included in the prices above.
Liners under 1,000 sq. ft. will be charged an additional \$40.00 handling fee. 100 sq. ft. minimum order requirement.

- Shipping is based on actual freight charges.
- Liners under 150 lb. are shipped via UPS.
- Liners over 150 lb. are shipped by common carrier.
- Someone must be present to inspect and accept delivery by common carrier. If you cannot unload the liner yourself, you will need to request a liftgate. Additional fees apply.
- Before signing the freight bill, inspect the liner to make sure it is the correct size and is undamaged.
- Shipping to a commercial site with equipment for unloading is recommended and can save money on freight charges.

STOCK UP
ON THE
MUST-HAVES

Make sure your supply cabinet is stocked with the parts and necessities that keep your drip irrigation system in working order.

Head online to see the full selection of parts and sizes at DRIPWORKS.COM



iFuse Purple Primer
Use the iFuse Purple Primer for softening and preparing of PVC and CPVC pipe and fittings. Removes grease, oil and dirt from the bonding surface of PVC and CPVC pipe and fittings.
PCPP8 8 oz\$9.95



Red Hot Blue Glue
A favorite with contractors. Blue, medium body, fast-setting cement. For quick pressurization and demanding conditions. Can also be used with IPS tubing and flexible PVC. Rated up through 6" PVC. Low odor. No primer needed.
PCBG4 4 oz\$7.95
PCBG8 8 oz\$10.95
PCBGPT Pint\$17.95



Gorilla PVC Cement
Gorilla Glue is virtually odorless, user-safe, and it doesn't need primer. Gorilla glue can be used from 32° to 140° F.
PCG4 4 oz\$10.95
PCG8 8 oz\$15.95
PCGPT Pint\$24.95

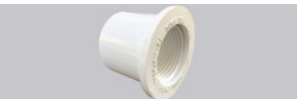


Thread Sealant Tape
Every pipe-threaded fitting should be wrapped with thread sealant tape or sealed with pipe dope. Wrap 3–4 layers clockwise around the threads before connecting the parts.
PCTEF 520" x 1/2" Roll\$1.29

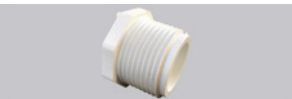
Key for PVC fitting types:
S = Slip (socket) FPT = Female Pipe Thread T = Threaded MPT = Male Pipe Thread



| Bushing (S x S) | | |
|-----------------|---------------|--------|
| Part # | Size | Price |
| P3412B▲ | 3/4" x 1/2" | \$0.37 |
| P112B▲ | 1" x 1/2" | \$0.72 |
| P134B▲ | 1" x 3/4" | \$0.75 |
| P11234B▲ | 1 1/2" x 3/4" | \$0.95 |
| P1121B▲ | 1 1/2" x 1" | \$0.98 |



| Bushing (S x FPT) | | |
|-------------------|---------------|--------|
| Part # | Size | Price |
| P3414STB▲ | 3/4" x 1/4" | \$0.79 |
| P3412STB▲ | 3/4" x 1/2" | \$0.61 |
| P112STB▲ | 1" x 1/2" | \$0.95 |
| P134STB▲ | 1" X 3/4" | \$0.98 |
| P11234STB▲ | 1 1/2" x 3/4" | \$1.79 |
| P1121STB▲ | 1 1/2" x 1" | \$1.69 |



| Threaded Bushing (MPT x FPT) | | |
|------------------------------|---------------|--------|
| Part # | Size | Price |
| P3412TTB▲ | 3/4" x 1/2" | \$1.05 |
| P112TTB▲ | 1" x 1/2" | \$1.49 |
| P134TTB▲ | 1" x 3/4" | \$1.49 |
| P11234TTB▲ | 1 1/2" x 3/4" | \$2.59 |
| P1121TTB▲ | 1 1/2" x 1" | \$2.79 |



| PVS Insert* x MPT | | |
|-------------------|--------|--------|
| Part # | Size | Price |
| P12MFA▲ | 1/2" | \$0.65 |
| P34MFA▲ | 3/4" | \$0.69 |
| P1MFA▲ | 1" | \$1.19 |
| P112MFA▲ | 1 1/2" | \$1.95 |

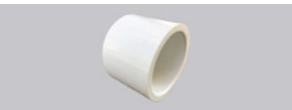
*Glues into PVC socket.



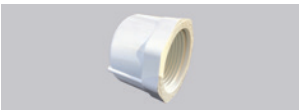
| Elbow (S x S) | | |
|---------------|-------------|--------|
| Part # | Size | Price |
| P1290▲ | 1/2" | \$0.39 |
| P3490▲ | 3/4" | \$0.45 |
| P3412R90▲ | 3/4" x 1/2" | \$0.79 |
| P190▲ | 1" | \$0.79 |
| P11490▲ | 1 1/4" | \$1.39 |
| P11290▲ | 1 1/2" | \$1.49 |
| P290▲ | 2" | \$2.29 |



| 45° Elbow (S x S) | | |
|-------------------|--------|--------|
| Part # | Size | Price |
| P1245▲ | 1/2" | \$0.69 |
| P3445▲ | 3/4" | \$0.98 |
| P145▲ | 1" | \$1.19 |
| P11245▲ | 1 1/2" | \$2.19 |
| P245▲ | 2" | \$2.69 |



| Slip Cap | | |
|----------|--------|--------|
| Part # | Size | Price |
| P12CA▲ | 1/2" | \$0.39 |
| P34CA▲ | 3/4" | \$0.39 |
| P1CA▲ | 1" | \$0.65 |
| P112CA▲ | 1 1/2" | \$0.95 |
| P2CA▲ | 2" | \$1.19 |



| Threaded Cap | | |
|--------------|------|--------|
| Part # | Size | Price |
| P12TCA▲ | 1/2" | \$0.69 |
| P34TCA▲ | 3/4" | \$0.89 |
| P1TCA▲ | 1" | \$1.19 |



| PVC Ball Valve (Threaded) | | |
|---------------------------|------|--------|
| Part # | Size | Price |
| P12BVT▲ | 1/2" | \$2.95 |
| P34BVT▲ | 3/4" | \$3.95 |
| P1BVT▲ | 1" | \$4.95 |



| PVC Ball Valve (Slip) | | |
|-----------------------|------|--------|
| Part # | Size | Price |
| P12BVS▲ | 1/2" | \$2.95 |
| P34BVS▲ | 3/4" | \$3.95 |
| P1BVS▲ | 1" | \$4.95 |



| Brass Ball Valve (Threaded) | | |
|-----------------------------|------|---------|
| Part # | Size | Price |
| VBBILF12 | 1/2" | \$8.95 |
| VBBILF34 | 3/4" | \$14.95 |
| VBBILF1 | 1" | \$21.95 |



| PVC Union Ball Valve | | |
|----------------------|--------|---------|
| Part # | Size | Price |
| P34UNBV▲ | 3/4" | \$9.95 |
| P1UNBV▲ | 1" | \$15.95 |
| P112UNBV▲ | 1 1/2" | \$29.95 |



| Tank Adapters with Neoprene Washer | | |
|------------------------------------|--------|---------|
| Part # | Size | Price |
| P34TAD | 3/4" | \$21.95 |
| P1TAD | 1" | \$27.95 |
| P112TAD | 1 1/2" | \$29.95 |
| P2TAD | 2" | \$44.95 |

These are used as outlets for storage tanks, ponds, and rainwater barrels. Creates a watertight seal with minimal effort.
Note: To make an outlet with shutoff for a rain barrel, use P34TAD, AMHMP (p. 23) and HSO (p. 22).



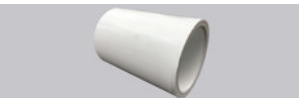
| Schedule 80 PVC Nipples and Risers | | | | |
|------------------------------------|------|--------|--------|--|
| Part # | MPT | Length | Price | |
| P12CN▲ | 1/2" | 1 1/4" | \$0.29 | |
| P122N▲ | 1/2" | 2" | \$0.39 | |
| P1212N▲ | 1/2" | 12" | \$0.89 | |
| P34CN▲ | 3/4" | 1 1/2" | \$0.39 | |
| P342N▲ | 3/4" | 2" | \$0.39 | |
| P344N▲ | 3/4" | 4" | \$0.59 | |
| P12N▲ | 1" | 2" | \$0.52 | |
| P23N▲ | 2" | 3" | \$1.89 | |



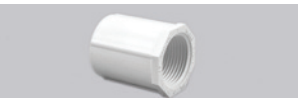
| Slip Union | | |
|------------|--------|---------|
| Part # | Size | Price |
| P12SU▲ | 1/2" | \$4.95 |
| P34SU▲ | 3/4" | \$5.95 |
| P1SU▲ | 1" | \$6.95 |
| P112SU▲ | 1 1/2" | \$13.95 |
| P2SU▲ | 2" | \$17.95 |



| Threaded Union | | |
|----------------|--------|---------|
| Part # | Size | Price |
| P12TU▲ | 1/2" | \$4.95 |
| P34TU▲ | 3/4" | \$5.95 |
| P1TU▲ | 1" | \$6.95 |
| P112TU▲ | 1 1/2" | \$13.95 |
| P2TU▲ | 2" | \$17.95 |



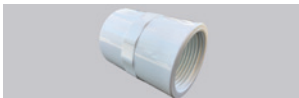
| Coupler (S x S) | | |
|-----------------|-------------|--------|
| Part # | Size | Price |
| P12C▲ | 1/2" | \$0.25 |
| P34C▲ | 3/4" | \$0.35 |
| P3412RC▲ | 3/4" x 1/2" | \$0.65 |
| P1C▲ | 1" | \$0.65 |
| P114C▲ | 1 1/4" | \$0.89 |
| P112C▲ | 1 1/2" | \$0.89 |
| P2C▲ | 2" | \$1.39 |



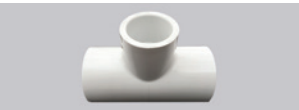
| Threaded Coupler (FPT x FPT) | | |
|------------------------------|-------------|--------|
| Part # | Size | Price |
| P12TC▲ | 1/2" | \$0.49 |
| P34TC▲ | 3/4" | \$0.89 |
| P3412TRC▲ | 3/4" x 1/2" | \$1.19 |
| P1TC▲ | 1" | \$1.19 |
| P134TRC▲ | 1" x 3/4" | \$1.79 |
| P112TC*▲ | 1 1/2" | \$7.95 |



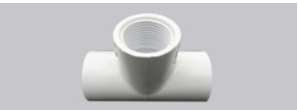
| Male Adapter (MPT x S) | | |
|------------------------|-------------|--------|
| Part # | Size | Price |
| P12MA▲ | 1/2" | \$0.35 |
| P34MA▲ | 3/4" | \$0.39 |
| P34M12S▲ | 3/4" x 1/2" | \$0.65 |
| P1MA▲ | 1" | \$0.69 |
| P114MA▲ | 1 1/4" | \$0.89 |
| P112MA▲ | 1 1/2" | \$1.19 |
| P2MA▲ | 2" | \$1.49 |



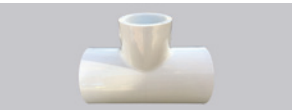
| Female Adapter (FPT x S) | | |
|--------------------------|-------------|--------|
| Part # | Size | Price |
| P12FA▲ | 1/2" | \$0.45 |
| P34FA▲ | 3/4" | \$0.59 |
| P34F12S▲ | 3/4" x 1/2" | \$0.79 |
| P1FA▲ | 1" | \$0.65 |
| P112FA▲ | 1 1/2" | \$1.19 |
| P2FA▲ | 2" | \$1.49 |



| Tee (S x S x S) | | |
|-----------------|--------|--------|
| Part # | Size | Price |
| P12T▲ | 1/2" | \$0.49 |
| P34T▲ | 3/4" | \$0.59 |
| P1T▲ | 1" | \$1.05 |
| P114T▲ | 1 1/4" | \$1.59 |
| P112T▲ | 1 1/2" | \$1.85 |
| P2T▲ | 2" | \$2.89 |



| Combo Tee (S x S x FPT) | | |
|-------------------------|-------------|--------|
| Part # | Size | Price |
| P12STT▲ | 1/2" | \$0.65 |
| P3412STT▲ | 3/4" x 1/2" | \$0.79 |
| P34STT▲ | 3/4" | \$1.29 |
| P112STT▲ | 1" x 1/2" | \$1.19 |
| P134STT▲ | 1" x 3/4" | \$1.69 |
| P1STT▲ | 1" | \$1.79 |



| Reducing Tee (S x S x S) | | |
|--------------------------|---------------|--------|
| Part # | Size | Price |
| P3412RT▲ | 3/4" x 1/2" | \$0.65 |
| P112RT▲ | 1" x 1/2" | \$0.98 |
| P1121RT▲ | 1 1/2" x 1" | \$2.79 |
| P11234RT▲ | 1 1/2" x 3/4" | \$2.95 |



| Marlex Street Elbow (MPT x FPT) | | |
|---------------------------------|------|--------|
| Part # | Size | Price |
| PMAR1290▲ | 1/2" | \$0.65 |
| PMAR3490▲ | 3/4" | \$0.85 |

FULL FLOW VALVES

AC VALVES

These high quality, in-line valves are designed for use with any of the electronic AC timers we carry. These valves operate at low flows to accommodate the lower water use of drip systems.



Galcon AC In-line Valves

These high-quality 24-volt AC valves are compatible with most AC timers. Galcon valves feature an easy-to-use manual on/off switch, female pipe thread (FPT) inlet and outlet, flow control stem, and a wide flow range. Pressure range for all valves is 7–145 PSI.

| | | |
|---------|-----------------------------|---------|
| VGNAC34 | ¾" Valve, 0.5–26 GPM. | \$22.95 |
| VGNAC1 | 1" Valve, 0.5–44 GPM. | \$24.95 |
| VGN112 | 1½" Valve, 22–140 GPM. | \$69.95 |
| VGN2 | 2" Valve, 22–176 GPM. | \$69.95 |



Baccara AC Valve

The only electric AC valve that works with low pressure and low flow. Baccara valves have a large pressure range of 4.3 to 140 PSI and a very low head loss at high flow rates. Their efficient design and advanced technology plastics make the valves strong with very low maintenance.

| | | |
|--------|----------------|---------|
| VBAC34 | ¾" Valve. | \$29.95 |
| VBAC1 | 1" Valve. | \$31.95 |



Rainbird Anti-Siphon Valves

This is the only AC anti-siphon valve we have found that is specifically designed for the low flow of a drip system. Pressure range is 15–150 PSI. 3-year warranty. Note: The top of the valve should be 6" above the highest emitter in the system.

| | | |
|---------|-------------------------|---------|
| VRBAS34 | ¾" Valve, 0.2–22 GPM* . | \$32.95 |
| VRBAS1 | 1" Valve, 0.2–40 GPM* . | \$34.95 |

*With 7 PSI pressure loss.

DC VALVES

These high quality, full flow, in-line battery operated DC valves are to be used with commercial-grade battery timers.



Galcon Battery Valves – 2 wires

Use with Galcon DC Battery timers.

- Battery or manual operation
- Female pipe thread inlet and outlet
- Pressure Range: 10 to 150 PSI

| | | |
|----------|--|---------|
| VGND34 | ¾" Valve with Flow Control, 0.1–28 GPM . . . | \$34.95 |
| VGND1 | 1" Valve with Flow Control, 0.2–35 GPM. . . | \$36.95 |
| TGNVA112 | 1½" Valve, 20–130 GPM | \$74.95 |
| TGNVA2 | 2" Valve, 30–160 GPM. | \$89.95 |



Baccara Battery Valve

The only DC valve that works with low pressure and low flow.

- ¾" Female pipe thread inlet and outlet
- Flow Range: 0.5–22 GPM
- Pressure Range: 4.3–145 PSI

TDCBAC34. \$35.95



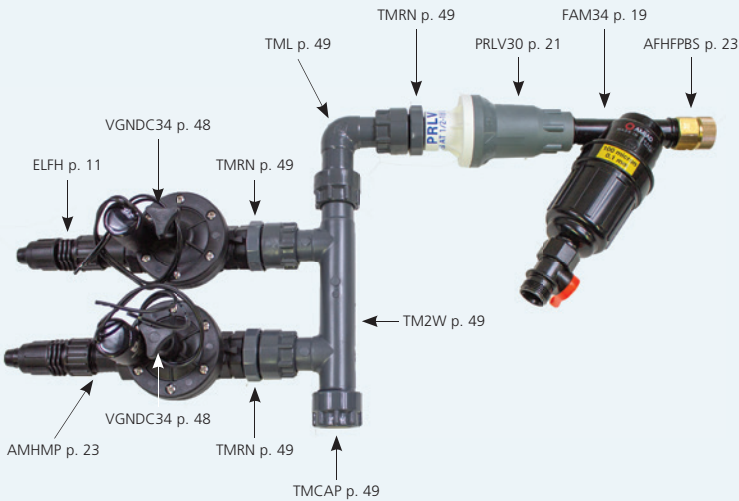
Alternator Valve

Don't pay for another timer or build a complex manifold to water two zones! Simply attach our hose-thread alternator valve. Ideal for remote applications.

- Flow switches outlets with each timer cycle
- No batteries required
- Allows flows up to 6 GPM
- Pressure range from 14–140 PSI
- Rugged, impact-resistant construction

TGNALT. \$29.95

Browse solenoid replacements at DRIPWORKS.COM



MANIFOLD SWIVEL SYSTEM

These PVC fittings let you create a flexible, compact manifold for almost any valve situation. The manifolds go together in minutes and the valves can be positioned more closely than if using standard PVC fittings. Valves are easy to align and systems are easy to expand.

All swivel pieces are 1" female pipe thread (with O-rings) and can be easily reduced for ¾" valves. All manifold parts are 1" pipe thread unless noted. No glue or tools needed, so add-ons are a breeze. Use Thread Sealant Tape on all pipe threads without O-rings. Maximum working pressure is 150 PSI.

Find helpful tips on manifold selection and setup at DRIPWORKS.COM

MANIFOLD FITTINGS

All manifold swivel parts should be hand-tightened only. A manifold attached to a faucet should rest at ground level using a high-pressure hose extension (p. 22).



Multi Outlet Swivel Manifolds

| | | |
|-------|--------------------------|---------|
| TM4W▲ | 4 Outlet, 15" long. | \$21.95 |
| TM3W▲ | 3 Outlet, 11" long. | \$16.95 |
| TM2W▲ | 2 Outlet, 7½" long. | \$10.95 |

Manifold Fittings

| | | |
|----------|---|--------|
| TMRS | Swivel x ¾" MPT. | \$3.95 |
| TM1S▲ | Swivel x 1" MPT. | \$3.95 |
| TM34SOC▲ | Swivel x ¾" Slip Socket. | \$3.49 |
| TM1SOC▲ | Swivel x 1" Slip Socket. | \$3.59 |
| TMC▲ | Cross, 3 Swivels x 1" MPT. | \$7.95 |
| TMT▲ | Tee, 2 Swivels x 1" MPT. | \$5.46 |
| TMCAP▲ | Cap, 1" FPT. | \$1.29 |
| TML▲ | Elbow, 90° Swivel x 1" MPT. | \$4.89 |
| TMRN | Reducing Nipple1" x ¾" MPT (for ¾" valve). | \$1.49 |
| TMN▲ | Nipple 1" x 1" MPT. | \$1.29 |
| TMOR | Manifold O-Ring. | \$0.69 |
| TMSCP▲ | Swivel x Swivel Coupler. | \$4.29 |

Swivel x Barbed Fitting

| | | |
|----------|------------------------|--------|
| TM34INS▲ | Swivel x ¾" Barb. | \$3.29 |
| TM1INS▲ | Swivel x 1" Barb. | \$3.29 |

LUBRICANT FOR O-RINGS & HOSE WASHERS

Give your O-rings, washers, and gaskets a better watertight seal and prevent them from drying out and cracking with a dab of this "miracle" lubricant.

| | | |
|-------|--------------------|--------|
| HLUBE | 4 oz. bottle. | \$5.95 |
|-------|--------------------|--------|





Find the right timer for your watering needs at [DRIPWORKS.COM](https://www.dripworks.com)

WHY A TIMER IS YOUR BEST INVESTMENT

When you’re not there to turn the water on, or when you forget to turn it off and run up your water bill, a drip irrigation timer can be your best investment. A timer will turn your system on and off at designated times so plants get the steady, consistent watering they need for optimum health and production.

DripWorks carries a large selection of drip irrigation AC, battery, solar, and windup timers. That gives you the option to match your timer to your source of power, or lack thereof. Whether you are looking for a drip irrigation battery-operated timer, a drip irrigation kit with timer, or something else, we can help you find the perfect solution for your watering needs.

TIMERS KEY

- **Battery Timers**
Hose-threaded, easy to install and program, and are typically limited to one valve.
- **High End Battery Timers**
Commercial-grade battery timers that can operate multiple pipe-threaded DC valves.
- **Electronic Timers**
Operate multiple 24-volt AC valves and require an AC power source.
- **Solar Timers**
Great alternative to a battery or electronic timer. These solar timers are powered by ambient light, require no backup power source, and are perfect for remote gardens.
- **Windup Timers**
An inexpensive alternative to a battery or electronic timer. Windup timers are great for those who forget to turn the water off.



BEST SELLER!

BLUETOOTH LCD TIMER

Easily program for weekly/daily or cyclic operation on LCD display. Standard female hose thread inlet / male hose thread outlet. Program from 14–90 ft. with clear view, easy programming with digital readout, manual override, manual rain off, and low battery indicator.

TGNHOSEBT. \$45.95

| | |
|----------------|--------------------------|
| Start Times | Up to 4 per day |
| Programming | Daily/Weekly or cyclical |
| Duration | 1 minute to 12 hours |
| Stations | 1 station |
| Batteries | One 9-volt alkaline* |
| Pressure Range | 15 to 145 PSI |
| Flow Range | 0.5 to 5.2 GPM @ 30 PSI |



REMOTE-CONTROLLED BLUETOOTH TIMERS

No need to be onsite to program (or re-program) these timers. Easily control setup and operation from your phone or any Bluetooth-enabled device.



BEST SELLER!

BLUETOOTH LCD TIMER

Easily program for weekly/daily or cyclic operation on LCD display. Standard female hose thread inlet / male hose thread outlet. Program from 14–90 ft. with clear view, easy programming with digital readout, manual override, manual rain off, and low battery indicator.

TGNHOSEBT. \$45.95

| | | | |
|-------------|--------------------------|----------------|-------------------------|
| Start Times | Up to 4 per day | Batteries | One 9-volt alkaline* |
| Programming | Daily/Weekly or cyclical | Pressure Range | 15 to 145 PSI |
| Duration | 1 minute to 12 hours | Flow Range | 0.5 to 5.2 GPM @ 30 PSI |
| Stations | 1 station | | |



GROWER'S CHOICE

HIGH FLOW LCD TIMER

Built-in high flow valve with ¾" or 1" female pipe thread inlet and outlet. ¾" model includes adapters for female hose inlet and male hose outlet. Adapters for other outlet sizes not included. Removable controller for easy programming, water-resistant construction, manual override, and low battery indicator.

TGNHFBTK ¾" High Flow Bluetooth Timer \$114.95
TGNHFK ¾" High Flow Timer. \$74.95
TGNHF1BT 1" High Flow Bluetooth Timer \$117.95
TGNHF1 1" High Flow Timer \$79.95
TGNHFWPK ¾" High Flow Waterproof Timer \$89.95

| | | | |
|-------------|---|----------------|--|
| Start Times | Up to 4 times per day, every day up to 30 days. | Batteries | One 9-volt alkaline* |
| Programming | Daily up to 30 days | Pressure Range | 10 to 115 PSI Bluetooth 10–145 PSI |
| Duration | 1 minute to 12 hours | Flow Range | ¾": 0.5 to 28 GPM @ 30 PSI 1": 0.5 to 32 GPM @ 30 PSI |
| Stations | 1 station | | |



FLIP OPEN LCD TIMER

Flip open panel. Standard female hose thread inlet and male hose thread outlet. Watertight battery compartment. Program from 14-90 ft. with clear view.

TGNLIDBT Bluetooth Timer \$49.95
TGNLID Timer \$45.95

| | | | |
|-------------|----------------------|----------------|---------------------------------------|
| Start Times | Up to 4 per day | Batteries | One 9-volt alkaline* |
| Programming | Daily/weekly | Pressure Range | 15 to 115 PSI Bluetooth 15-145 PSI |
| Duration | 1 minute to 12 hours | Flow Range | 0.5 to 5.2 GPM @ 30 PSI |
| Stations | 1 station | | |



BATTERY DC TIMERS

Commercial-grade timers operate full-flow, inline DC valves that are sold separately (unless noted otherwise). Multiple zones can be watered from one timer with our automatic distribution valves.

GREENHOUSE BATTERY TIMER



Solid construction and watering durations down to 1 second intervals make this battery timer an exceptional bargain. Perfect for greenhouse operations and seed propagation. Independent programming for each valve, manual operation, rain sensor capable, master valve capable, and weather resistant.

- TGNGH 1 Station\$99.95
- TGNGH6 6 Station\$145.95

| | | | |
|-------------|---|--|--|
| Start Times | Up to 4 per valve per day in irrigation mode; multiple start times available in misting mode. | | |
| Programming | Weekly/Cyclical | | |
| Duration | 1 second to 12 hours | | |
| Stations | 1 or 6 station models Use with Galcon DC valves, sold separately | | |
| Batteries | TGNGH: One 9-volt alkaline* TGNGH6: Two 9-volt alkaline* | | |

1 TO 4 STATION BATTERY TIMER



These one or four station timers are ideal for home use. They are simple to install and program. Independent programming for each valve, manual operation, rain sensor capable, master valve capable, and weather resistant.

- TGN1ST 1 Station\$99.95
- TGN4ST 4 Station\$105.95

| | | | |
|-------------|--|--|--|
| Start Times | Up to 4 per valve per day | | |
| Programming | Daily/Monthly | | |
| Duration | 1 minute to 12 hours | | |
| Stations | 1 or 4 station models. Use with Galcon DC valves, sold separately. | | |
| Batteries | One 9-volt alkaline* | | |

6 TO 12 STATION BATTERY TIMER



This commercial-grade battery timer has a sturdy, waterproof housing that makes it ideal for watering multiple areas in locations that are too remote for an AC timer. Irrigation or propagation modes. Independent programming for each valve, rain sensor capable, manual operation, sensor port to individual valves, master valve capable, seasonal adjustment by program, and weather resistant.

- TGNDC6 6 Station\$179.95
- TGNDC9 9 Station\$249.95
- TGNDC12 12 Station\$264.95

| | | | |
|-------------|--|--|--|
| Start Times | Up to 4 per valve per day in irrigation mode; multiple start times available in misting mode | | |
| Programming | Weekly/Cyclical | | |
| Duration | 1 second to 12 hours | | |
| Stations | Available in 6, 9, or 12 station models. Use with Galcon DC valves, sold separately | | |

| | | | |
|-----------|---|--|--|
| Batteries | TGNDC6: Two 9-volt alkaline* TGNDC9: Four 9-volt alkaline* TGNDC12: Four 9-volt alkaline* | | |
|-----------|---|--|--|

ELECTRONIC AC TIMERS

These are the most reliable timers that you can get for your irrigation system and generally have greater flexibility and longer life than battery timers.

GALCON 6 STATION GREENHOUSE AC TIMER

This indoor irrigation and propagation controller is used for gardening, greenhouses, nurseries, and large grows. The easy-to-program LCD screen offers independent programming of each valve with the ability to operate two valves simultaneously. Program specific "windows" of time.

- TGNGR6\$99.95

| | | | |
|-----------------|--|--------------------|------------------------------------|
| Duration | Irrigation mode: 1–5 min. increments; 5–15 min. increments; 1–23 hour increments; 1–30 day increments Propagation mode: 1 second increments | | |
| Stations | 6 stations | Programs | 4 independent programs per station |
| Start Times | Irrigation mode: 4 Propagation mode: 1 | Watering Intervals | 1 to 30 days |
| Weekly Schedule | Days of week, AM/PM modes | Battery Backup | 9-volt alkaline* |
| Ports | Pumpstart/Master Valve, Rain Sensor | Warranty | 3 years |



HUNTER PRO C AC TIMER

The Pro C controller is a 4-station model that can be expanded up to 16 stations to meet homeowner and commercial needs. Programmable delay between stations (0 seconds to 4 hours). Programmable rain delay. Optional remote control.

- THPREXT4 4-Station Exterior Timer.\$219.95
- THPRINT4 4-Station Interior Timer.\$219.95
- THPRMOD 3-Station Add-On Module\$69.95
- THPRMOD9 9-Station Add-On Module\$199.95

| | | | |
|-----------------|--|--------------------|--------------|
| Stations | 4 (up to 16 with modules) | Programs | 3 |
| Start Times | 4 per program | Watering Intervals | 1 to 31 days |
| Duration | 1 minute to 6 hours | Battery Backup | Unnecessary |
| Weekly Schedule | Days of week, odd/even days | Warranty | 2 years |
| Ports | Pumpstart/Master Valve, Rain sensor with bypass, 1 master plus 2 valves maximum open | | |



Expandable!

4 TO 12 STATION AC TIMER

These controllers are especially suited for greenhouse and misting applications. Easy to install and operate.

- TGNAC4\$164.95
- TGNAC6\$174.95
- TGNAC9\$189.95
- TGNAC12\$199.95

| | | | |
|-------------|--|--------------------|-------------------------------------|
| Stations | Available in 4, 6, 9, or 12 station models. | Programs | Independent programs for each valve |
| Start Times | Up to 4 per valve per day in weekly schedule mode; multiple start times available in misting mode. | Watering Intervals | Once a minute to once every 30 days |
| Duration | 1 second to 12 hours | Battery Backup | 9-volt alkaline* |
| Ports | Pumpstart/Master Valve | Warranty | 2 years |



TIMERS FOR SPECIFIC NEEDS

Great solution for off-grid gardens. These are a great alternative to a battery or electronic timer.



LEIT SOLAR TIMER

Powered by ambient solar light, this DIG timer is the world's first sustainable irrigation timer with no battery or AC power source! No direct sunlight required. Valves have female pipe thread (FPT) inlet and outlet. Manual on/off, power saving LCD screen, monthly seasonal adjustment (0–200%), flow control handle, and timer is removable from valve for easy programming.

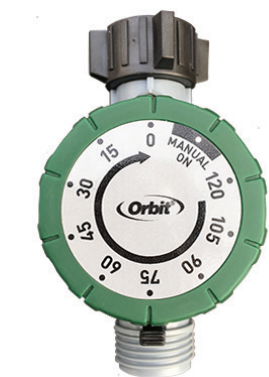
| | | |
|-----------------------|---|----------|
| TDLT34 | Timer with ¾" Valve . . | \$119.95 |
| TDLT1 | Timer with 1" Valve . . . | \$129.95 |
| Stations | 1 station | |
| Start Times | Up to 5 per day | |
| Programming | Weekly calendar, odd days, even days, or intervals from 1-30 days | |
| Duration | 1 minute to 6 hours | |
| Ports | Rain sensor compatible, see online | |
| Pressure Range | 10 to 150 PSI | |
| Flow Range | TDLT34: 0.1 GPM to 25 GPM TDLT1: 0.1 GPM to 30 GPM | |



DIG HOSE SOLAR TIMER

The DIG Waterproof Solar Powered Timer is an environmentally friendly timer functioning only on clean, renewable, solar power without the need of a backup battery or AC power. The ¾" hose thread inlet and outlet make it easy to attach to any faucet or ¾" hose thread fitting. Powered by ambient light, easy to install, and it features a large LCD screen that makes it easy to read and program. Rain sensor capable and manual operation available.

| | |
|-----------------------|--|
| TDIGSOLAR. | \$69.95 |
| Stations | 1 station |
| Start Times | Up to 4 per day |
| Programming | Weekly with odd days, even days, or intervals from 1–30 days |
| Duration | 1 minute to 5 hours and 59 minutes |
| Pressure Range | 10 to 100 PSI |
| Flow Range | 0.1 GPM to 8 GPM |



SINGLE OUTLET WIND-UP TIMER

Simply turn the dial each time you want it to water, and the timer will automatically shut off the water flow. No batteries required. Comfort grip handle and manual on/off.

| | |
|-----------------------|-------------------|
| TORWU | \$14.95 |
| Stations | 1 station |
| Duration | Up to 120 minutes |
| Pressure Range | 5 to 120 PSI |
| Flow Range | Up to 8 GPM |
| Warranty | 1 year |

BATTERY TIMERS

Easy to install and to program, a battery timer will turn your system on and off at designated times so plants get the steady, consistent watering they need for optimum health and production.



MULTI-VALVE LCD TIMER

Single program timer for up to 4 hose-mounted valves. Valves operate in sequence. Includes 4-outlet manifold, timer, and two valves (add two more valves as needed).

| | | |
|-----------------------|--|---------|
| TOR4W | With Two Valves. | \$99.95 |
| TOR4VA | Add-on Valve. | \$21.95 |
| Start Times | Up to 3 per day—select specific days of the week | |
| Duration | 1 to 99 minutes (per valve) | |
| Stations | 4 stations | |
| Batteries | Two AA alkaline* | |
| Pressure Range | 10 to 80 PSI | |
| Flow Range | 0.5 to 6.5 GPM per each valve | |



ZERO PRESSURE TIMER

The Green Timer EVO operates at zero-pressure. This timer is ideal for gravity fed low-pressure systems. The TZP uses a mechanical ball valve to open and close. Easy-to-set dials, low battery indicator, manual operation, standard female hose thread (FHT) inlet and male hose thread (MHT) outlet, and time delay function up to 12 hours.

| | |
|-----------------------|--|
| TIZP..... | \$39.95 |
| Stations | 1 station |
| Start Times | 1, 2, 3, 4, 6, 8, 12 hours or 1, 2, 3, 7 days |
| Programming | First dial sets duration: 1 minute to 2 hours. Second dial sets frequency: every hour up to once a week |
| Duration | Select 1, 3, 5, 10, 15, 20, 30, 45, 60, 90, or 120 minutes |
| Batteries | Two AAA alkaline* |
| Pressure Range | 0 to 115 PSI |
| Flow Range | Up to 7.5 GPM at 50 PSI |
| Warranty | 2 years |

*Batteries not included.

FIND THE RIGHT TIMER FOR YOUR WATERING NEEDS

You can connect with live experts, check out how-to videos, calculate every aspect of your plan, and find the answers you need all in one place.

Dripworks.com

