

# PROSERIES 150 VALVE



The K-Rain® ProSeries 150 Valves offer the irrigation professional a wide array of features and benefits.

## ALL MODELS

- **Heavy Duty, Corrosion and UV Resistant PVC Construction** – Increases the life of the valve.
- **Manual External Bleed Screw** – Provides for manual operation in system start up.
- **Manual Internal Bleed through Solenoid** – Provides for manual operation without discharging water outside the valve.
- **Captured Plunger** – Allows for the solenoid to be removed without losing the internal plunger.
- **Flow Control** – Allows for precise flow adjustment.

## 1", 1-1/2" AND 2" MODELS

- **External Bleed Screw with Removable Metering Pin** – Allows for easy cleaning of the metering pin without disassembling the valve.

## 1-1/2" AND 2" MODELS

- **Removable Inlet Cap** – Allows for easy conversion from globe to angle-style valve.
- **Heavy Duty Santoprene® Diaphragm** – Unique design improves durability of diaphragm.

## JAR-TOP MODELS

- **Threaded Jar-Top** – Allows for quick removal of the cap for easy servicing after installation.
- **Glass-Filled Nylon Screw Cap** – Increased durability.



**K-Rain Manufacturing Corp.**  
1640 Australian Avenue  
Riviera Beach, FL 33404 USA  
561.844.1002  
FAX: 561.842.9493  
1.800.735.7246 | [www.krain.com](http://www.krain.com)

## Specifications

### OPERATING; 1" (2,5 CM) MODELS

- Pressure Rating: 10 – 150 PSI (0,7 – 10,3 bar)
- Flow Range: .25 – 30 GPM (0,95 – 113,8 LPM)

#### 7101 PROSERIES 150 1" (2,5 CM) VALVE

Flow Rate - GPM	5	10	15	20	30
PSI Loss	2.9	2.1	1.8	3.0	5.0

#### 7101-FC PROSERIES 150 1" (2,5 CM) VALVE

Flow Rate - GPM	5	10	15	20	30
PSI Loss	6	4.1	4.1	3.1	6.0

#### PROSERIES 150 1" (2,5 CM) VALVE WITH JAR-TOP

Flow Rate - GPM	5	10	15	20	30
PSI Loss	3.3	3.9	2.9	3.2	6.1

Pressure range: 10-150 psi (0,7 a 10,3 bar)

### OPERATING; 1-1/2" & 2" (3,8 & 5 CM) MODELS

- Pressure Rating: 20 – 150 PSI (1,4 – 10,3 bar)
- Flow Range: 20 – 120 GPM (75,7 – 454, 2 LPM)

#### PROSERIES 150 1-1/2" (3,8 CM) VALVE

Flow Rate - GPM	20	30	40	50	60	80
PSI Loss - Globe	3.0	2.6	2.3	2.9	4.1	5.5
PSI Loss - Angle	2.7	2.2	1.9	2.2	3.0	4.4

#### PROSERIES 150 2" (5 CM) VALVE

Flow Rate - GPM	20	30	40	50	60	80	100	120
PSI Loss - Globe	2.2	1.9	1.7	1.5	1.6	2.9	4.8	6.2
PSI Loss - Angle	1.9	1.9	1.7	1.5	1.5	2.1	3.2	4.6

Pressure range: 20-150 psi (1,4 a 10,3 bar)

### ELECTRICAL SPECIFICATIONS

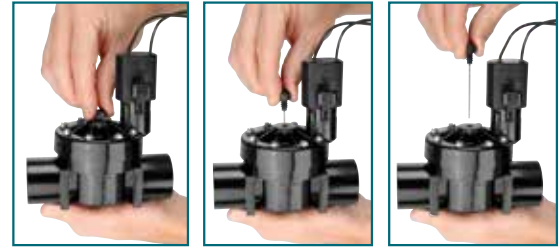
- Standard Solenoid: 24V AC 60 Hz
- Inrush Current: .43 Amps
- Holding Current: .25 Amps

### DIMENSIONS

- 1" Models: Height: 5 1/4" (13,3 cm), Width: 3 1/8" (7,95 cm), Length: 5" (12,7 cm)
- 1" Flow Control Models: Height: 5 7/8" (14,9 cm), Width: 3 1/8" (7,95 cm), Length: 5" (12,7 cm)
- 1" Jar-Top Models: Height: 5 1/4" (13,3 cm), Width: 3" (7,6 cm), Length: 4 3/8" (11,1 cm)
- 2" Models: Height: 8-7/8" (22,6 cm), Width: 4-7/8" (12,4 cm), Length: 6-1/3" (16,1 cm)
- 1-1/2" Models: Height: 8" (20,3 cm), Width: 4-1/4" (10,8 cm), Length: 5-1/2" (14 cm)

## Manual External Bleed Screw

The 1", 1 1/2" and 2" (2,5, 3,8 and 5 cm) models feature a removable external bleed screw and metering pin to simplify cleaning and maintenance. With the External Bleed Screw, manual operation during start up is easy.



## No Tools Required

The K-Rain Jar-Top valve allows for quick and easy servicing after installation.



## System Flexibility

Removable inlet cap allows for easy conversion from globe to angle-style valve.



## Models

<b>7101</b>	1" (2,5 cm) Female Thread, NPT
<b>7101-SL</b>	1" (2,5 cm) Female Slip
<b>7101-BSP</b>	1" (2,5 cm) Female Thread, BSP
<b>7101-BSP-FC</b>	1" (2,5 cm) Female Thread, BSP with Flow Control
<b>7101-FC</b>	1" (2,5 cm) Female Thread, NPT with Flow Control
<b>7101-SL-FC</b>	1" (2,5 cm) Female Slip with Flow Control
<b>7101-J</b>	1" (2,5 cm) Female Thread Jar-Top, NPT
<b>7101-J-SL</b>	1" (2,5 cm) Female Slip Jar-Top
<b>7101-J-BSP</b>	1" (2,5 cm) Female Thread Jar-Top, BSP
<b>7101-J-MXB</b>	1" (2,5 cm) Male Thread x 1" (2,5 cm) Barb Jar-Top
<b>7115</b>	1 1/2" (3,8 cm) Female Thread
<b>7115-BSP</b>	1 1/2" (3,8 cm) Female Thread, BSP
<b>7102</b>	2" (5 cm) Female Thread
<b>7102-BSP</b>	2" (5 cm) Female Thread, BSP