

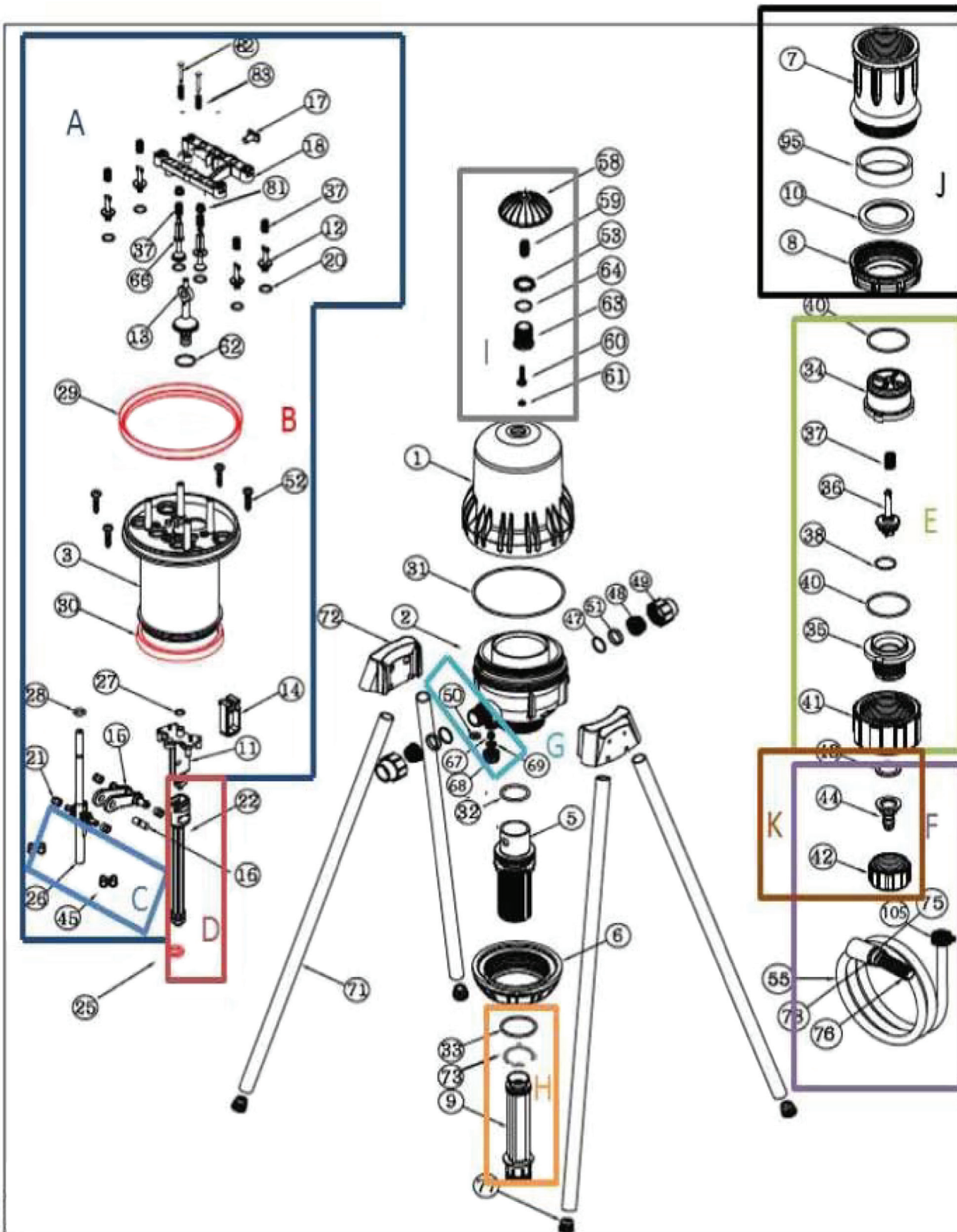
**DEMA**<sup>®</sup>

# MIXRITE TF SERIES PARTS



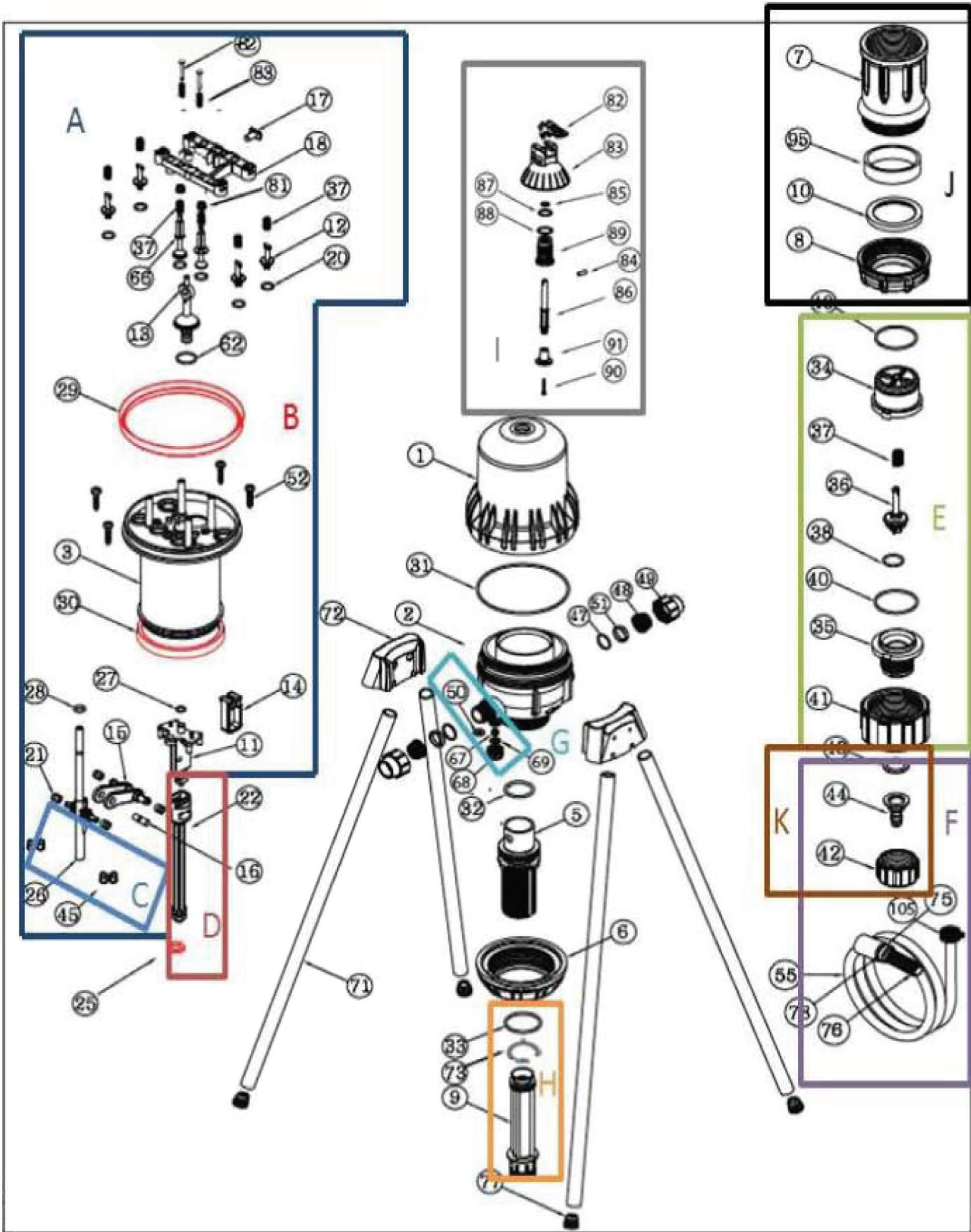
**MixRite**

TF 5.001, TF 5.002, TF 5.005  
AIR RELEASE



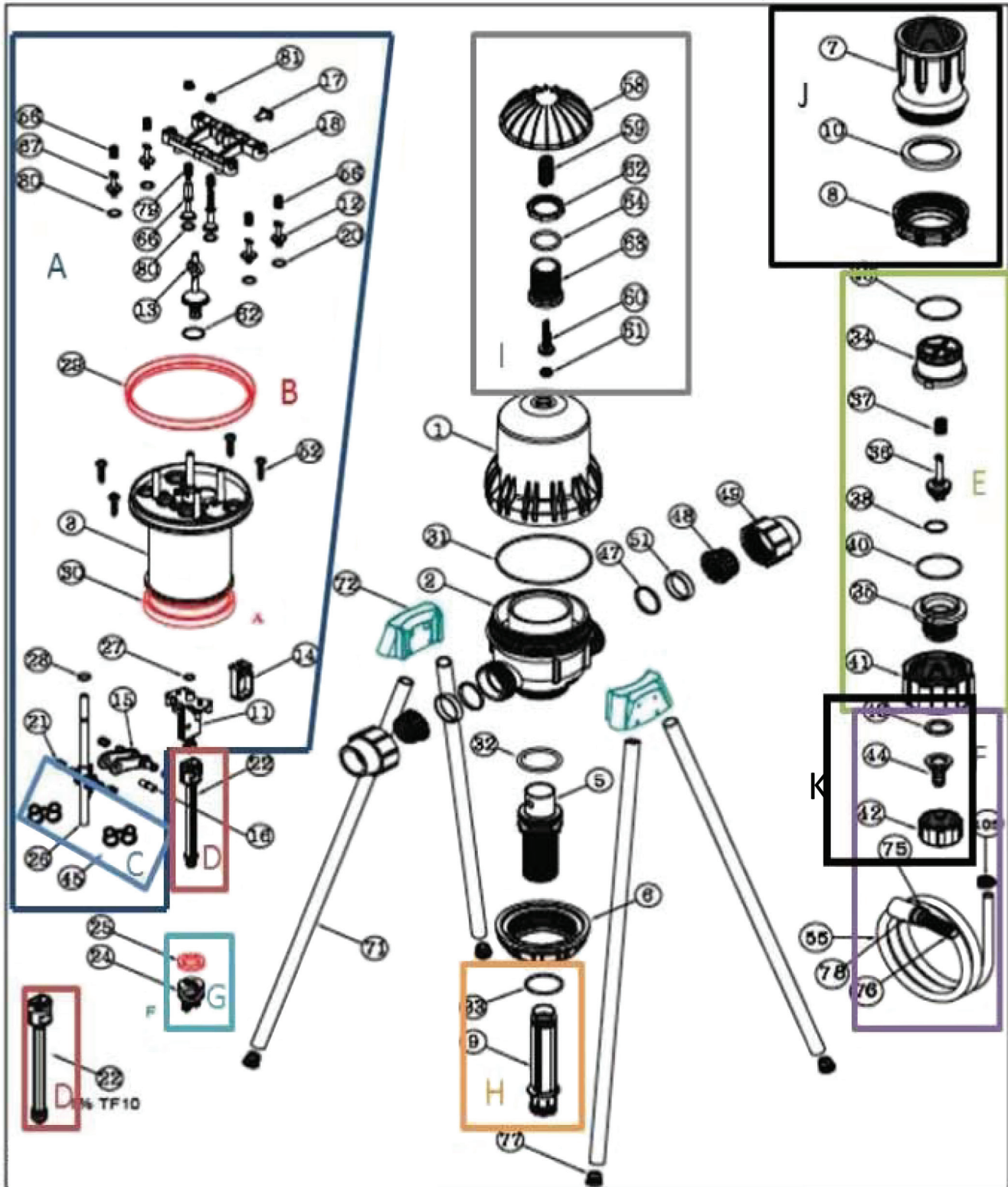
<b>NO.</b>	<b>DESCRIPTION</b>	<b>PART #</b>
A	TF5 Engine Assembly	35200000006
B	TF5 1% Lip Seal Kit, with Piston Seal	35200000001
	TF5 2% Lip Seal Kit, with Piston Seal	35200000002
	TF5 5% Lip Seal Kit, with Piston Seal	35200000005
C	Plastic Engine Spring Kit, TF5 TF10	35100000045
D	TF5 Chemical Piston Seal 1% - Kit - w/ connecting rod	35200000019
	TF5 Chemical Piston Seal 2% - Kit - w/ connecting rod	35200000020
	TF5 Chemical Piston Seal 5% - Kit - w/ connecting rod	35200000021
E	Check Valve Kit, 19 MM Barb - 1410, TF5, TF10	35200000059
F	Suction Tube Kit, 1% and 2% models	36000000021
	5% Suction Tube Kit w/ weight, strainer, 1410, TF10	36000000028
G	TF5 anti-siphon kit	352260.9999
H	TF5 Suction Cylinder Kit, 1%, w/ o-ring	35200000009
	TF5 Suction Cylinder Kit, 2% w/ o-ring	35200000011
	TF5 Suction Cylinder Kit, 5% w/o-ring	35200000012
I	TF5, TF10, TF25 Air Release Kit	35000000349
J	TF5 Adjustment Collar and Nut Kit	35200000028
K	12MM Hose Barb Kit, 1% and 2% models	22454752122
44	19MM Hose Barb Only, 5% models.	32454759122
	TF5 EDPM O-ring Kit	35200000057
1	TF5 Cover/Dome	35201011301
2	TF5 Body, 1" NPT	35202031302
5	TF5 Cylinder Support - 1% (no o-ring)	35204012305
	TF5 Cylinder Support - 2% (no o-ring)	35204022305
	TF5 Cylinder Support - 5% (no o-ring)	35204052305
6	Cylinder Support Nut	35205011806
7	Adjustment Sleeve	35207011807
8	Latch Nut	35208011808
10	Cylinder Support Spacer	35217013110
30	TF5 Lower Piston Dual Lip Seal	35290012230
31	TF5 Dome Oring	38023562231
33	MIXRITE TF 5.001 CHEMICAL CYLINDER O-RING 2-321 FOR 1% MODEL	38023212233
	MIXRITE TF 5.005 CHEMICAL CYLINDER O-RING 2-219, 2% and 5%	38022192233
	Cylinder Support O-ring (BUNA)	38050072232
	Cylinder Support O-ring (EPDM)	38050073232
41	Check Valve Nut	36030622100
71	Stand Legs - send 4 per unit	38000004171
72	Blue Bracket for Legs	35125011872
73	Guide Ring, Cylinder Support	35228011168
Not Shown	Foot valve for viscous Products 1/2", 3/4" barb (1% and 2% models)	57.12FTV
	Foot valve for viscous Products 1" barb (5% models)	57.34FTV

TF 5.001, TF 5.002, TF 5.005  
MANUAL ON-OFF



<b>NO.</b>	<b>DESCRIPTION</b>	<b>PART #</b>
A	TF5 Engine Assembly	35200000006
B	TF5 1% Lip Seal Kit, with Piston Seal	35200000001
	TF5 2% Lip Seal Kit, with Piston Seal	35200000002
	TF5 5% Lip Seal Kit, with Piston Seal	35200000005
C	Plastic Engine Spring Kit, TF5 TF10	35100000045
D	TF5 Chemical Piston Seal 1% - Kit - w/ connecting rod	35200000019
	TF5 Chemical Piston Seal 2% - Kit - w/ connecting rod	35200000020
	TF5 Chemical Piston Seal 5% - Kit - w/ connecting rod	35200000021
E	Check Valve Kit, 19 MM Barb - 1410, TF5, TF10	35200000059
F	Suction Tube Kit, 1% and 2% models	36000000021
	5% Suction Tube Kit w/ weight, strainer, 1410, TF10	36000000028
G	TF5 anti-siphon kit	352260.9999
H	TF5 Suction Cylinder Kit, 1%, w/ o-ring	35200000009
	TF5 Suction Cylinder Kit, 2% w/ o-ring	35200000011
	TF5 Suction Cylinder Kit, 5% w/o-ring	35200000012
I	TF5, TF10, TF25 On/Off Lever Assembly Kit	35000000348
J	TF5 Adjustment Collar and Nut Kit	35200000028
K	12MM Hose Barb Kit, 1% and 2% models	22454752122
44	19MM Hose Barb Only, 5% models.	32454759122
	TF5 EDPM O-ring Kit	35200000057
1	TF5 Cover/Dome	35201011301
2	TF5 Body, 1" NPT	35202031302
5	TF5 Cylinder Support - 1% (no o-ring)	35204012305
	TF5 Cylinder Support - 2% (no o-ring)	35204022305
	TF5 Cylinder Support - 5% (no o-ring)	35204052305
6	Cylinder Support Nut	35205011806
7	Adjustment Sleeve	35207011807
8	Latch Nut	35208011808
10	Cylinder Support Spacer	35217013110
30	TF5 Lower Piston Dual Lip Seal	35290012230
31	TF5 Dome Oring	38023562231
33	MIXRITE TF 5.001 CHEMICAL CYLINDER O-RING 2-321 FOR 1% MODEL	38023212233
	MIXRITE TF 5.005 CHEMICAL CYLINDER O-RING 2-219, 2% and 5%	38022192233
	Cylinder Support O-ring (BUNA)	38050072232
	Cylinder Support O-ring (EPDM)	38050073232
41	Check Valve Nut	36030622100
71	Stand Legs - send 4 per unit	38000004171
72	Blue Bracket for Legs	35125011872
73	Guide Ring, Cylinder Support	35228011168
Not Shown	Foot valve for viscous Products 1/2", 3/4" barb (1% and 2% models)	57.12FTV
	Foot valve for viscous Products 1" barb (5% models)	57.34FTV

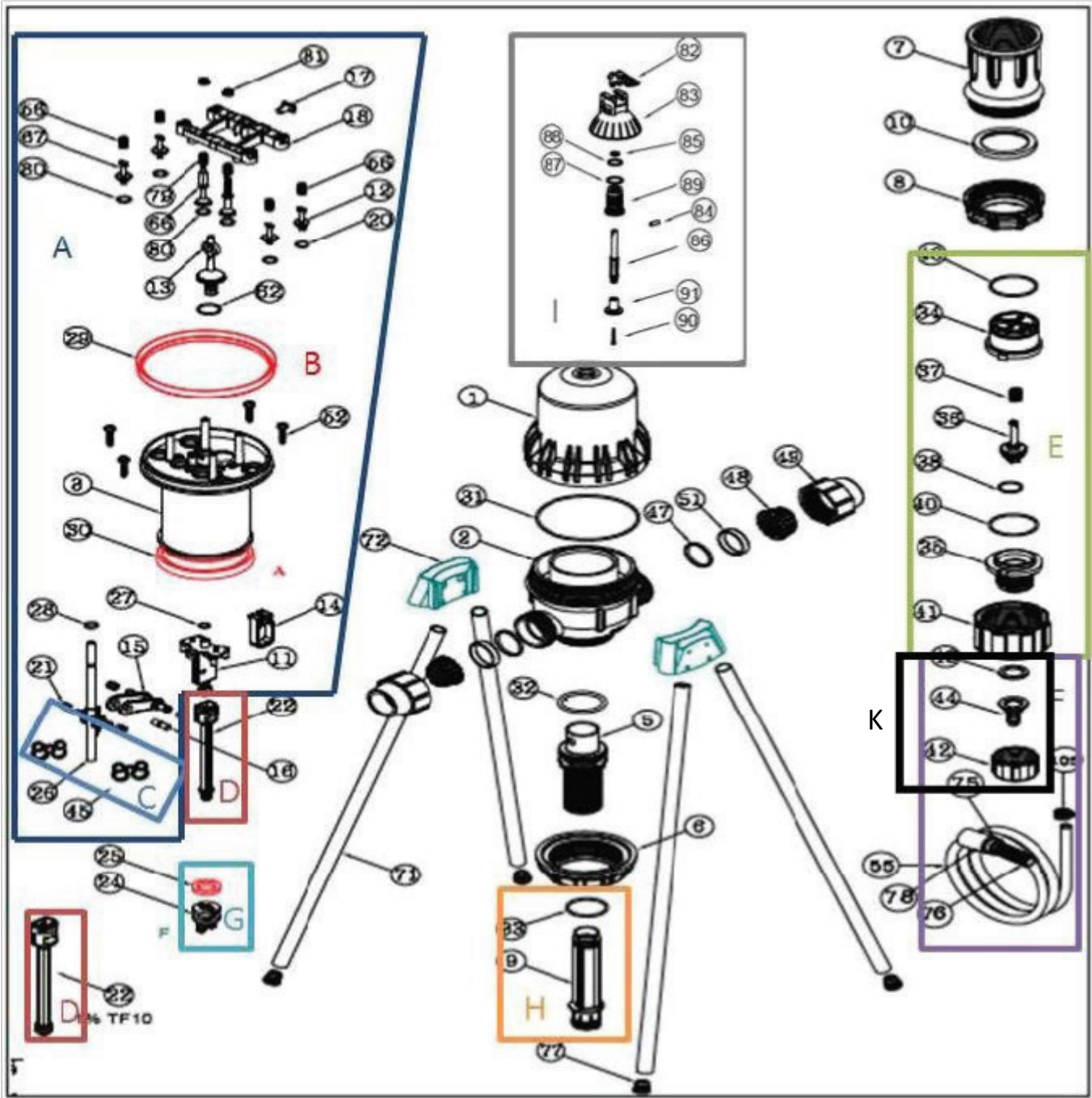
TF 10.001, TF 10.002, TF 10.005  
AIR RELEASE



<b>NO.</b>	<b>DESCRIPTION</b>	<b>PART #</b>
A	TF10 Engine Assembly Kit	35100000053
B	TF10 - 1% Seal Kit	35100000001
	TF10 - 2% Seal Kit	35100000002
	TF10 - 5% Seal Kit	35100000005
C	MixRite Plastic Engine Spring Kit (2 per kit)	35110000045
D	TF10 Piston Bar	35122013122
E	TF10 Chemical Check Valve Kit	35200000059
F	TF10 Suction Tube Kit	36000000028
G	TF10 - 1% Suction Piston Kit, w/ Oring	35100000019
	TF10 - 2% Suction Piston kit, w/ Oring	35100000020
	TF10 - 5% Suction Piston kit w/ Oring	35100000021
H	TF10 - 1% Suction Cylinder Kit, w/ Oring	35100000009
	TF10 - 2% Suction Cylinder kit w/ Oring	35100000011
	TF10 - 5% Suction Cylinder Kit w/ Oring	35100000012
I	TF5,10,25 Universal Air Release kit	35000000349
J	TF10 1% & 2% Adjustment Collar and Nut	35100000031
	TF10 5% Adjustment Collar and Nut	35100000032
K	12MM Hose Barb Kit, 1% and 2% models	22454752122
44	19MM Hose Barb Only, 5% models.	32454759122
1	TF10 Dome/Cover	35100000022
2	TF10 Body with 1.5" NPT Threads	35102081302
5	TF10 - 1% Cylinder Support, without O-ring	35104012304
	TF10 - 2% Cylinder Support, without O-ring	35104022304
	TF10 - 5% Cylinder Support, without O-ring	35104052304
6	TF10 Cylinder Support Nut	35105011806
31	TF10 Dome O-ring #31	38023622231
32	TF10 Cylinder Support Oring #32, EPDM	38023342332
33	TF10 Chemical Cylinder O-ring, EPDM	36023243233
41	TF5, TF10 Black Check Valve Nut	36030622100
71	Stand Legs - send 4 per unit	38000004171
72	Blue Bracket for Legs	35125011872
Not Shown	Foot valve for viscous Products 1/2", 3/4" barb (1% and 2% models)	57.12FTV
	Foot valve for viscous Products 1" barb (5% models)	57.34FTV



TF 10.001, TF 10.002, TF 10.005  
MANUAL ON-OFF

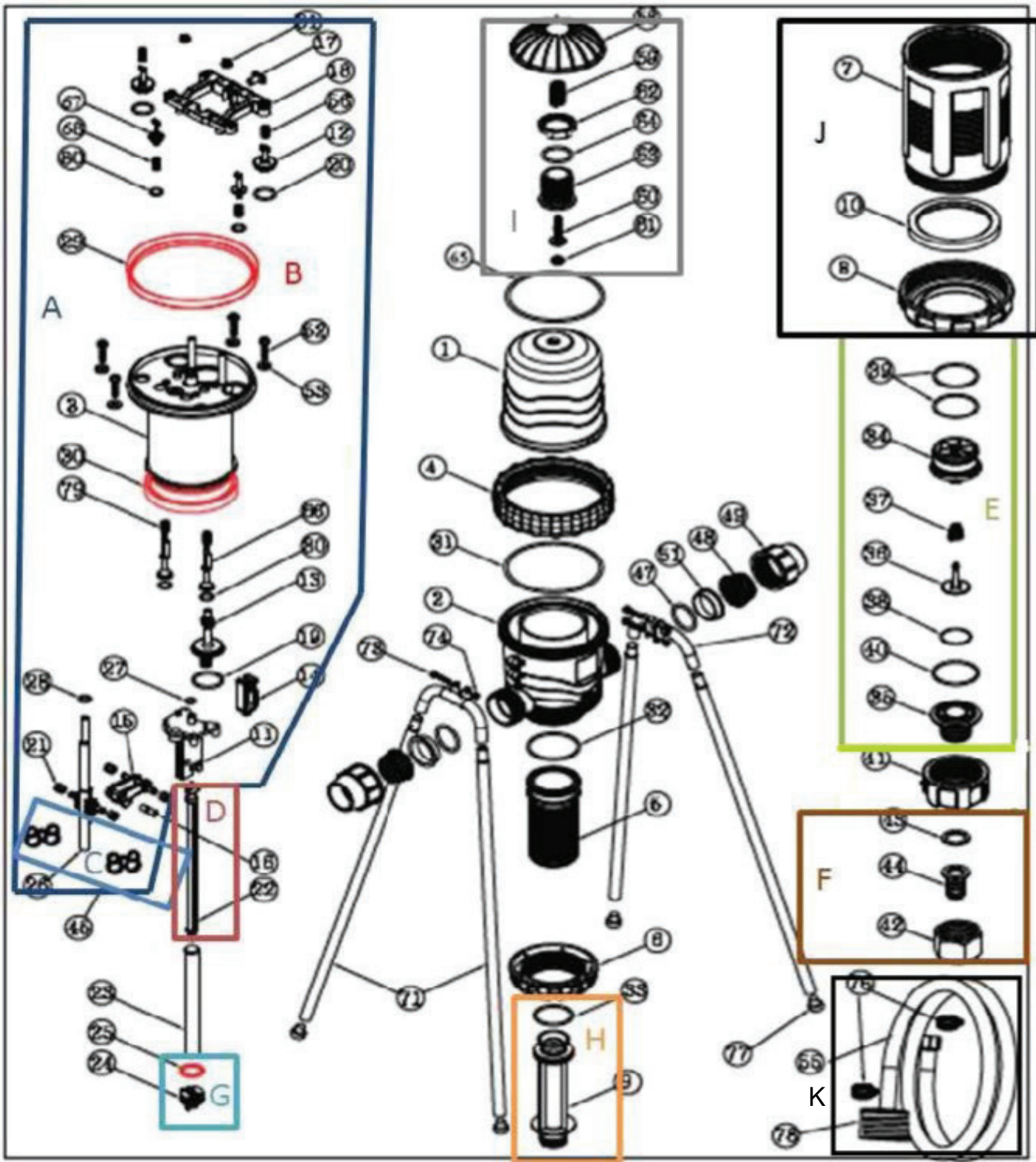




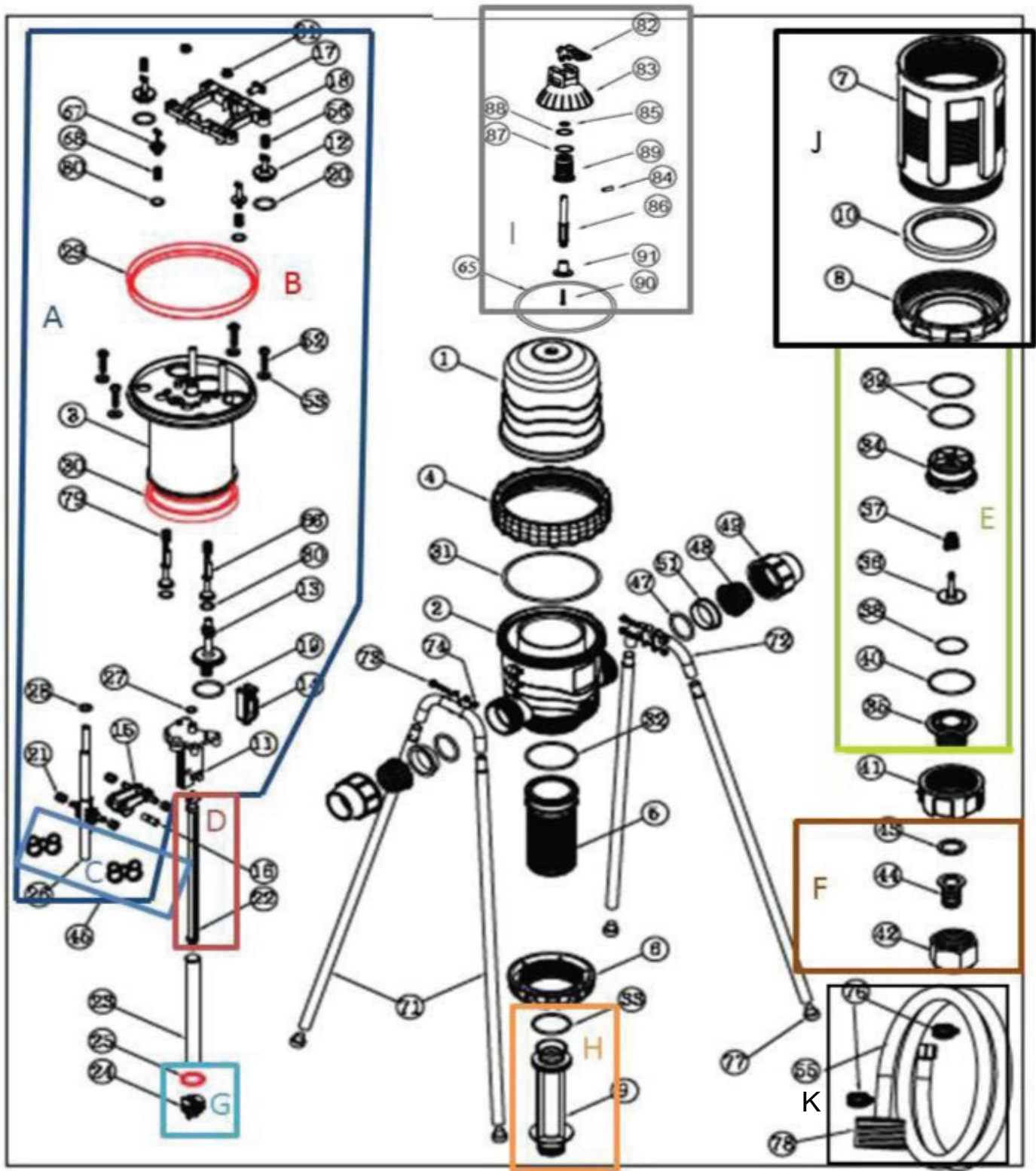
<b>NO.</b>	<b>DESCRIPTION</b>	<b>PART #</b>
A	TF10 Engine Assembly Kit	35100000053
B	TF10 - 1% Seal Kit	35100000001
	TF10 - 2% Seal Kit	35100000002
	TF10 - 5% Seal Kit	35100000005
C	MixRite Plastic Engine Spring Kit (2 per kit)	35110000045
D	TF10 Piston Bar	35122013122
E	TF10 Chemical Check Valve Kit	35200000059
F	TF10 Suction Tube Kit	36000000028
G	TF10 - 1% Suction Piston Kit, w/ Oring	35100000019
	TF10 - 2% Suction Piston kit, w/ Oring	35100000020
	TF10 - 5% Suction Piston kit w/ Oring	35100000021
H	TF10 - 1% Suction Cylinder Kit, w/ Oring	35100000009
	TF10 - 2% Suction Cylinder kit w/ Oring	35100000011
	TF10 - 5% Suction Cylinder Kit w/ Oring	35100000012
I	TF5,10,25 On/Off Lever Assembly Kit	35000000348
J	TF10 1% & 2% Adjustment Collar and Nut	35100000031
	TF10 5% Adjustment Collar and Nut	35100000032
K	12MM Hose Barb Kit, 1% and 2% models	22454752122
44	19MM Hose Barb Only, 5% models.	32454759122
1	TF10 Dome/Cover	35100000022
2	TF10 Body with 1.5" NPT Threads	35102081302
5	TF10 - 1% Cylinder Support, without O-ring	35104012304
	TF10 - 2% Cylinder Support, without O-ring	35104022304
	TF10 - 5% Cylinder Support, without O-ring	35104052304
6	TF10 Cylinder Support Nut	35105011806
31	TF10 Dome O-ring #31	38023622231
32	TF10 Cylinder Support Oring #32, EPDM	38023342332
33	TF10 Chemical Cylinder O-ring, EPDM	36023243233
41	TF5, TF10 Black Check Valve Nut	36030622100
71	Stand Legs - send 4 per unit	38000004171
72	Blue Bracket for Legs	35125011872
Not Shown	Foot valve for viscous Products 1/2", 3/4" barb (1% and 2% models)	57.12FTV
	Foot valve for viscous Products 1" barb (5% models)	57.34FTV



TF 25.001, TF 25.002, TF 25.005  
AIR RELEASE



<b>NO.</b>	<b>DESCRIPTION</b>	<b>PART #</b>
A	TF25 Complete Engine Kit	35000000005
B	TF25 - 1% Lip Seal Kit	35000000008
	TF25 - 2% Lip Seal Kit	35000000002
	TF25 - 5% Lip Seal Kit	35000000003
C	TF25 Engine Spring Kit	35000000045
D	TF25 - Piston Bar 1%	35013015222
	TF25 - Piston Bar 2%	35013005222
	TF25 - Piston Bar 5% w/ SST	35013025222
E	TF25 Chemical Check Valve kit	35000000022
F	TF25 Suction Hose Connector Kit	25.166
G	TF25 -1% Suction Piston kit, w/ oring	35000000019
	TF25 - 2% Suction Piston kit, w/ oring	35000000020
	TF25 - 5% Suction Piston kit, w/ oring	35000000021
H	TF25 - Suction Cylinder kit, 1%, w/ oring	35000000009
	TF25 - Suction Cylinder kit, 2% w/ oring	35000000011
	TF25 - Suction Cylinder kit, 5% w/ oring	35000000012
I	Universal Air Release Kit	35000000349
J	TF25 - 1% Adjustment Collar and Nut Kit	35000000032
	TF25 - 2% Adjustment Collar and Nut Kit	35000000033
	TF25 - 5% Adjustment Collar and Nut Kit	35000000034
K	TF25 Suction Hose Kit	35000000049
	TF25 O-ring Kit	35000000057
1	TF25 Cover	35001001301
2	TF25 Body, 2" NPT	35002161302
4	TF25 Cover Nut for Body and Dome	35004001804
5	TF25 - 1% Cylinder Support, No Oring	35005013305
	TF25 - 2% Cylinder Support, No Oring	35005023305
	TF25 - 5% Cylinder Support, No Oring	35005053305
6	TF25 Cylinder Support Nut	35006001806
7	TF25 Adjustment Collar Nut	35007001807
8	TF25 Latch Nut	35008001808
23	Piston Sleeve (slides over Piston Bar)	35014001123
31	TF25 Dome O-ring	38023709231
32	TF 25 Cylinder Support Oring, EPDM	38010563232
41	TF25 Check Valve Nut	35019003841
65	TF25 Delring Ring (white ring under blue nut)	35032005179
71	MixRite Stand Legs	38000004171
Not Shown	TF25 Bridge for Legs (Blue Plastic)	35034013872



<b>NO.</b>	<b>DESCRIPTION</b>	<b>PART #</b>
A	TF25 Complete Engine Kit	35000000005
B	TF25 - 1% Lip Seal Kit	35000000008
	TF25 - 2% Lip Seal Kit	35000000002
	TF25 - 5% Lip Seal Kit	35000000003
C	TF25 Engine Spring Kit	35000000045
D	TF25 - Piston Bar 1%	35013015222
	TF25 - Piston Bar 2%	35013005222
	TF25 - Piston Bar 5% w/ SST	35013025222
E	TF25 Chemical Check Valve kit	35000000022
F	TF25 Suction Hose Connector Kit	25.166
G	TF25 -1% Suction Piston kit, w/ oring	35000000019
	TF25 - 2% Suction Piston kit, w/ oring	35000000020
	TF25 - 5% Suction Piston kit, w/ oring	35000000021
H	TF25 - Suction Cylinder kit, 1%, w/ oring	35000000009
	TF25 - Suction Cylinder kit, 2% w/ oring	35000000011
	TF25 - Suction Cylinder kit, 5% w/ oring	35000000012
I	Universal ON/OFF lever assembly kit	35000000348
J	TF25 - 1% Adjustment Collar and Nut Kit	35000000032
	TF25 - 2% Adjustment Collar and Nut Kit	35000000033
	TF25 - 5% Adjustment Collar and Nut Kit	35000000034
K	TF25 Suction Hose Kit	35000000049
	TF25 O-ring Kit	35000000057
1	TF25 Cover	35001001301
2	TF25 Body, 2" NPT	35002161302
4	TF25 Cover Nut for Body and Dome	35004001804
5	TF25 - 1% Cylinder Support, No Oring	35005013305
	TF25 - 2% Cylinder Support, No Oring	35005023305
	TF25 - 5% Cylinder Support, No Oring	35005053305
6	TF25 Cylinder Support Nut	35006001806
7	TF25 Adjustment Collar Nut	35007001807
8	TF25 Latch Nut	35008001808
23	Piston Sleeve (slides over Piston Bar)	35014001123
31	TF25 Dome O-ring	38023709231
32	TF 25 Cylinder Support Oring, EPDM	38010563232
41	TF25 Check Valve Nut	35019003841
65	TF25 Delring Ring (white ring under blue nut)	35032005179
71	MixRite Stand Legs	38000004171
Not Shown	TF25 Bridge for Legs (Blue Plastic)	35034013872



# Dispensing Innovative Agricultural Solutions

Founded in 1956, DEMA's roots are deeply entrenched in fluid control products. It all started with a customer's request to easily and accurately mix chemical with water over 60 years ago. We've grown a bit since then, our line of products now touch uniquely different markets such as commercial laundry, food and beverage processing, housekeeping, car wash and many others. You can find DEMA products across the globe and on all seven continents. We're experts in mixing and moving fluids from point A to point B, precisely, each and every time.

**We have a wide variety of agricultural products to fit your application from field fertigation, dairy sanitization, chemical transfer, water treatment, to clean-in-place systems.**

**Let us know how we can help. Contact us today.**



02/2023



## DEMA Engineering Company

10020 Big Bend Road  
St. Louis, MO 63122 U.S.A  
Tel: 314-966-3533  
Fax: 314-965-8319



[www.ag.demaeng.com](http://www.ag.demaeng.com)



[sales@demaeng.com](mailto:sales@demaeng.com)